



● MINERAL

● AGGREGATES

● IN ONTARIO

Statistical Update

2 0 0 2

Prepared by:



**THE ONTARIO AGGREGATE
RESOURCES CORPORATION**

MINERAL AGGREGATES IN ONTARIO

PRODUCTION STATISTICS

2002

Prepared by

The Ontario Aggregate Resources Corporation

TABLE OF CONTENTS

Overview	1
Management of Ontario's Mineral Aggregate Resources	1
Role of the Ministry of Natural Resources	2
Aggregate Production	4

TABLES AND GRAPHS

1. Aggregate Production in Ontario 1990-2002	5
2. Licence and Wayside Permit Production by Lower Tier Municipality	6
3. Licence and Wayside Permit Production by Upper Tier Municipality	12
4. The Top 10 Producing Municipalities	13
5. Number and Type of Aggregate Licences	14
6. Licenced Aggregate Production by Commodity Type (MNR Districts).....	15
7. Aggregate Permit Production by Commodity Type (MNR Districts)	16 - 17
8. Aggregate Permit & Licence Production (CPCA Geographic Areas)	18
9. Rehabilitation of Licenced Aggregate Sites	19
10. Number and Type of Aggregate Permits	20

APPENDICES

- A. Glossary of Terms
- B. Historical Designation of Private Land under the Pits and Quarries Control Act and the Aggregate Resources Act
- C. CPCA Geographic Areas
- D. Map of Areas Designated under the Aggregate Resources Act
- E. Map of Aggregate Licence Officers of Ontario

Additional copies of this report may be obtained at a cost of \$5.00 each to cover preparation and postage from:

The Ontario Aggregate Resources Corporation
1001 Champlain Avenue, Suite 103
Burlington, ON L7L 5Z4
Toll Free 1-866-308-6272
or Telephone (905) 319-7424
or Fax (905) 319-7423

Cette publication spécialisée n'est disponible qu'en anglais

For internal use only.

*In order for TOARC to better meet the needs of those using this publication,
we welcome any comments or suggestions you may have.*

You may send your comments/suggestions to the attention of Linda Peterson,
Database Supervisor.

Email: lpeterson@toarc.com

Fax: (905) 319-7423

Mail: The Ontario Aggregate Resources Corporation
Suite 103, 1001 Champlain Avenue
Burlington ON L7L 5Z4

MINERAL AGGREGATES IN ONTARIO

Overview

Mineral aggregate is an indispensable commodity to the infrastructure of our modern ‘built environment’. High quality aggregate is a key ingredient in the production of ready-mixed concrete, manufactured concrete products of all types (block, brick, precast, etc.), asphalt pavements and sub-surface fill which is so important in providing drainage and load bearing base for structures. Aggregates literally provide the basis for a \$30 billion construction industry that employs over 270,000 people in Ontario. The aggregate industry employs an estimated 7,000 people directly and some 34,000 people indirectly in services such as transportation and equipment.

In 2002, this basic non-renewable resource was supplied from 2,776 licensed aggregate sites on private land in designated parts of the Province and 3,215 permitted sites on Crown land. It is estimated that over 50% of all aggregate produced in the Province is sold to public authorities for the construction and maintenance of the public infrastructure such as roads, bridges, etc.

Management of Ontario’s Mineral Aggregate Resources

At the Provincial level, the management of Ontario’s aggregate resources is the responsibility of the Ministry of Natural Resources (MNR). In 1997, in an effort to better focus resources on the delivery of core programs, the MNR took steps to build a partnership with private industry to manage certain administrative functions. Accordingly, subsections 6.1 (1) and 6.1 (3) of the *Aggregate Resources Act*, R.S.O. 1990, Chap. A.8, as amended (the “Act”), gave the Minister the power to create the Aggregate Resources Trust (the “Trust”) and appoint a trustee to look after its affairs. TOARC was incorporated in 1997 to act as trustee of the Aggregate Resources Trust, a trust created under the authority of the Aggregate Resources Act and pursuant to a trust indenture between the Corporation and the Minister of Natural Resources for the Province of Ontario.

The Trust Purposes include:

1. The rehabilitation of land for which a Licence or Permit has been revoked and for which final rehabilitation has not been completed;
2. The rehabilitation of abandoned pits and quarries, including surveys and studies respecting their location and condition;
3. Research on aggregate resources management, including rehabilitation;
4. Payments to the Crown in right of Ontario and to regional municipalities, counties and local municipalities in accordance with regulations made pursuant to the Act;
5. The management of the Abandoned Pits and Quarries Rehabilitation Fund;
6. Such other purposes as may be provided for by or pursuant to Paragraph 6.1(2) 5 of the Act.

In August of 1999, Addendum 1 to the Original Trust Indenture was signed to expand the Trust Purposes to include:

- (a) The education and training of persons engaged in or interested in the management of the aggregate resources of Ontario, the operation of pits or quarries, or the rehabilitation of land from which aggregate has been excavated;
- (b) The gathering, publishing and dissemination of information relating to the management of the aggregate resources of Ontario, the control and regulation of aggregate operations and the rehabilitation of land from which aggregate has been excavated.

TOARC is governed by a multi-stakeholder board of directors. The seven-member Board is composed of directors from the Aggregate Producer's Association of Ontario (APAO), representatives from environmental groups, municipalities and non-APAO member aggregate producers. TOARC maintains its own office facilities and management staff. TOARC as the ARA trustee is responsible to the Minister of Natural Resources to fulfill the Trust purposes as outlined in Bill 52. The MNR maintains a presence on the Board with an ex officio representative.

Since its inception in 1997, TOARC has focused upon the efficient collection and disbursement of aggregate resource charges, the auditing of production reports, the rehabilitation of abandoned pits and quarries through the MAAP program, the creation of an inventory of sites where licences have been revoked, as well as their rehabilitation, and the general management of the Trust assets.

Role of the Ministry of Natural Resources

While the MNR has developed certain external partnerships for the delivery of portions of their Aggregate Resources Program, their mission remains:

- To protect the provincial interest in aggregate resources and develop, maintain and enforce appropriate technical standards.
- To provide leadership in the development of partnerships with key stakeholders for the effective management of aggregate resources to benefit the people of Ontario.

With the guidance of the mission statements, a number of program objectives have been created which drive MNR's daily business practices. These program objectives include:

- Promote exploration and ensure availability through the conservation and orderly development of aggregate resources.
- Ensure that aggregate resources are developed with a high standard of environmental protection and public safety.

- Upgrade and maintain current information databases essential for sound technical and scientific decisions.
- Ensure fair revenue from the production of Crown resources.
- Ensure industry compliance with technical standards.
- Train staff and external clients in skills and knowledge essential for the effective delivery of the Aggregate Resources Program.

The continued business approach for the Aggregate Resources Program is based on the following principles:

- The core business of the program is:
 - Standards and policy development
 - Technical approvals
 - Ensuring compliance with standards
- Private industry clients assume responsibility and accountability for:
 - Compliance reporting
 - Financial management
 - Operations

Regional technical committees have been established that provide continuous feedback and solutions to technical issues in the delivery of the Aggregate Resources Program. The Non-Renewable Resources Section provides coordination and leadership to these committees.

The delegation of authority policy approved in July of 1998 continues. The objective of this policy is to delegate Ministerial authority to the level that provides the best efficiencies and customer service. Standing committees with the industry continue to encourage ongoing communication and customer service.

Core program staff responsible for the standards and policy development, program design and program coordination, evaluation and monitoring are part of the Non Renewable Resources Section, Lands and Natural Heritage Branch, Natural Resource Management Division. The districts that have either Aggregate Resources Officers or Aggregate Technicians deliver this program. The specialists and technicians, who are designated inspectors, are the core staff responsible for the acceptance of applications and are leads when dealing with compliance. These inspectors often have responsibility beyond the administrative boundaries of their districts. Also, at the district level, reporting to the Compliance Supervisor, Conservation Officers take an active role in enforcement actions under the Aggregate Resources Act.

In 1997, certain responsibilities with respect to the issuing and administration of permits and wayside permits were delegated to the Ontario Ministry of Transportation (MTO), specific to MTO contracts and needs.

Aggregate Production

Production of mineral aggregates in 2002 totaled approximately 165 million tonnes, down 1.2% from the previous year. Production from licensed operations was down 3.6 million tonnes compared to 2001, a drop of 2.5%. Wayside permit production tripled but on very small tonnages (.2 million in 2001 to .6 million in 2002). Production from aggregate permits on Crown Land decreased marginally from 2001 (7.4 million to 7.1 million tonnes).

Table 1

AGGREGATE PRODUCTION IN ONTARIO - 1990 - 2002
(rounded to nearest million tonnes)

	1990	1991	1992	1993	1994	1995	1996	1997	1998	1999	2000	2001	2002
Licences	135	107	101	105	113	109	114	124	124	131	145	145	141
Wayside Permits*	3	2	2	2	2	2	2	1	2	1	1	0	1
Aggregate Permits	11	14	13	12	10	9	9	8	9	11	10	7	7
Category 14 (Forest Industry)	-	-	-	-	-	-	-	-	-	2	3	3	4
Private Land Non-Designated (estimated)	12	12	12	12	11	10	11	11	11	12	12	12	12
ONTARIO TOTAL	161	135	128	131	136	130	136	144	146	157	171	167	165

*Wayside Permit production is reported as the 'total applied for' tonnage of all permits issued, adjusted where actual tonnages for completed contracts are known.

*Actual production for 2001 Wayside Permits was just over .2 million tonnes.

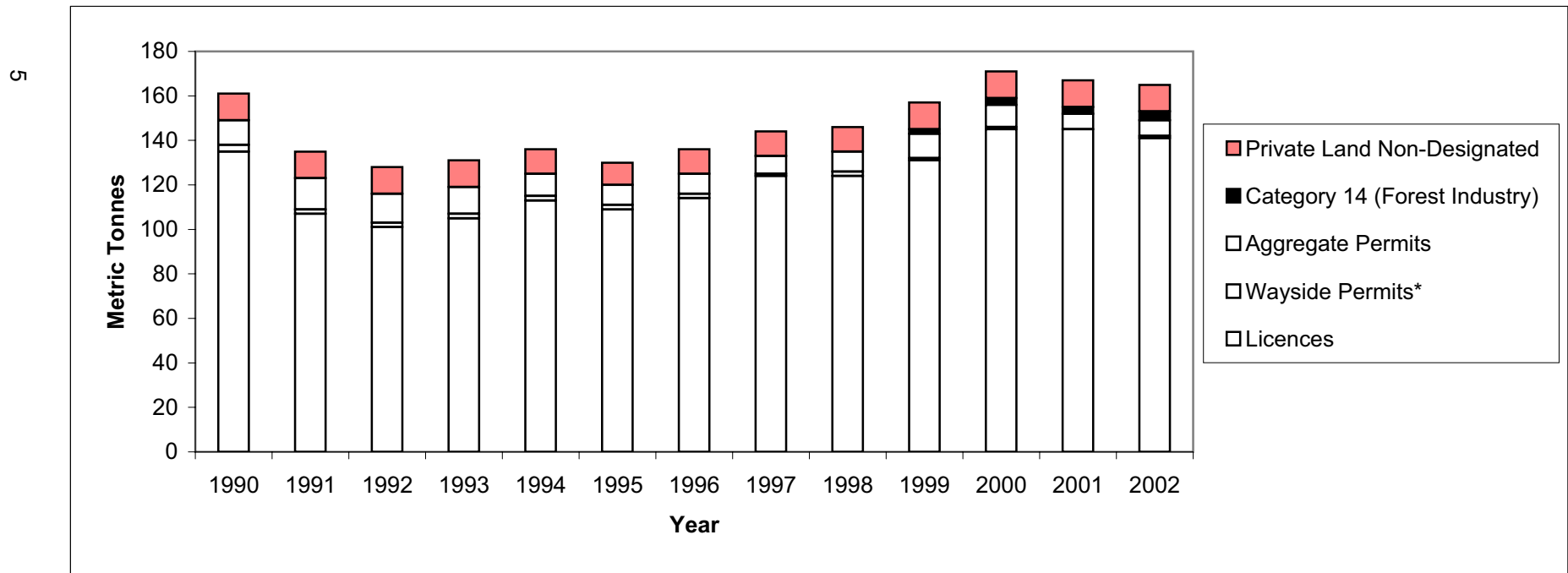


Table 2

**LICENCE AND WAYSIDE PERMIT PRODUCTION
BY LOWER TIER MUNICIPALITY**

(Reported in Metric Tonnes)

Municipality	Licences	Wayside Permits	Total
<i>Algoma District</i>			
Algoma District, Unorganized	33,694.32		33,694.32
Hilton Tp	27,471.70		27,471.70
Jocelyn Tp	36,475.71		36,475.71
Johnson Tp/Tarbutt & Tarbutt Add'l Tp	40,443.60		40,443.60
Laird Tp/St. Joseph Tp	26,753.38		26,753.38
Macdonald, Meredith & Aberdeen Add'l Tp	4,665.34		4,665.34
Sault Ste. Marie, City of	658,639.29		658,639.29
Sub-Total	828,143.34	0.00	828,143.34
<i>Brant</i>			
Brant, County of/Brantford, City of	1,807,057.29		1,807,057.29
Sub-Total	1,807,057.29	0.00	1,807,057.29
<i>Bruce</i>			
Arran-Elderslie, Municipality of	135,347.84		135,347.84
Brockton, Municipality of	142,742.16		142,742.16
Huron-Kinloss Tp	210,533.10		210,533.10
Kincardine, Municipality of	49,805.05		49,805.05
Northern Bruce Peninsula, Municipality of	246,439.54		246,439.54
Saugeen Shores, Town of	304,136.74	35,000.00	339,136.74
South Bruce, Municipality of	393,703.22		393,703.22
South Bruce Peninsula, Town of	197,648.94		197,648.94
Sub-Total	1,680,356.59	35,000.00	1,715,356.59
<i>Chatham-Kent</i>			
Chatham-Kent, Municipality of	505,204.15		505,204.15
Sub-Total	505,204.15	0.00	505,204.15
<i>Dufferin</i>			
Amaranth Tp/East Luther Grand Valley Tp	357,916.57		357,916.57
East Garafraxa Tp	942,458.48		942,458.48
Melancthon Tp	239,361.56		239,361.56
Mono Tp	411,638.18		411,638.18
Mulmur Tp	391,377.46		391,377.46
Sub-Total	2,342,752.25	0.00	2,342,752.25
<i>Durham</i>			
Brock Tp	1,405,900.95		1,405,900.95
Clarington, Municipality of	4,661,002.36		4,661,002.36
Oshawa, City of/Scugog Tp/Whitby, Town of	231,139.24		231,139.24
Uxbridge Tp	4,740,955.06		4,740,955.06
Sub-Total	11,038,997.61	0.00	11,038,997.61
<i>Elgin</i>			
Bayham, Municipality of/Malahide Tp	38,753.96		38,753.96
Central Elgin, Municipality of	343,448.29		343,448.29
West Elgin, Municipality of	103,202.60		103,202.60
Sub-Total	485,404.85	0.00	485,404.85

Table 2

**LICENCE AND WAYSIDE PERMIT PRODUCTION
BY LOWER TIER MUNICIPALITY**

(Reported in Metric Tonnes)

Municipality	Licences	Wayside Permits	Total
Essex			
Amherstburg, Town of/Leamington, Municipality of/Pelee Tp	1,496,731.33		1,496,731.33
Kingsville, Town of	377,315.58		377,315.58
Sub-Total	1,874,046.91	0.00	1,874,046.91
Frontenac			
Frontenac Islands Tp	31,776.46		31,776.46
Kingston, City of	1,180,843.46		1,180,843.46
South Frontenac Tp	423,219.36		423,219.36
Sub-Total	1,635,839.28	0.00	1,635,839.28
Greater Sudbury			
Greater Sudbury, City of	2,277,094.18		2,277,094.18
Sub-Total	2,277,094.18	0.00	2,277,094.18
Grey			
Chatsworth Tp	362,156.99		362,156.99
Georgian Bluffs, Tp	596,334.42		596,334.42
Grey Highlands, Municipality of	486,173.21		486,173.21
Meaford, Municipality of	265,507.56		265,507.56
Southgate Tp	253,078.02		253,078.02
The Blue Mountains, Town of	223,362.63		223,362.63
West Grey, Municipality of	341,840.39	99,680.00	441,520.39
Sub-Total	2,528,453.22	99,680.00	2,628,133.22
Haldimand			
Haldimand, County of	1,944,181.19		1,944,181.19
Sub-Total	1,944,181.19	0.00	1,944,181.19
Halton			
Burlington, City of/Halton Hills, Town of	6,273,404.54		6,273,404.54
Milton, Town of	5,871,513.08		5,871,513.08
Sub-Total	12,144,917.62	0.00	12,144,917.62
Hamilton			
Hamilton, City of	5,411,479.23	124,600.00	5,536,079.23
Sub-Total	5,411,479.23	124,600.00	5,536,079.23
Hastings			
Belleville, City of	460,789.36		460,789.36
Centre Hastings, Municipality of	79,702.82		79,702.82
Madoc Tp	639,661.19		639,661.19
Marmora & Lake, Municipality of	5,600.80		5,600.80
Quinte West, City of	630,464.16		630,464.16
Tyendinaga Tp	179,561.22		179,561.22
Tweed, Municipality of	79,706.08		79,706.08
Sub-Total	2,075,485.63	0.00	2,075,485.63

Table 2

**LICENCE AND WAYSIDE PERMIT PRODUCTION
BY LOWER TIER MUNICIPALITY**

(Reported in Metric Tonnes)

Municipality	Licences	Wayside Permits	Total
<i>Huron</i>			
Ashfield-Colborne-Wawanosh Tp	740,111.58		740,111.58
Bluewater, Municipality of/South Huron, Municipality of	51,830.20		51,830.20
Central Huron, Municipality of	673,397.30		673,397.30
Howick Tp	193,009.21		193,009.21
Huron East, Municipality of	829,231.48		829,231.48
Morris-Turnberry, Municipality of	189,785.69		189,785.69
North Huron Tp	58,490.07		58,490.07
Sub-Total	2,735,855.53	0.00	2,735,855.53
<i>Kawartha Lakes</i>			
Kawartha Lakes, City of	6,425,046.64		6,425,046.64
Sub-Total	6,425,046.64	0.00	6,425,046.64
<i>Lambton</i>			
Enniskillen Tp/Plympton-Wyoming, Town of	182,752.91		182,752.91
Lambton Shores, Municipality of	186,066.69		186,066.69
Warwick Tp	348,565.78		348,565.78
Sub-Total	717,385.38	0.00	717,385.38
<i>Lanark</i>			
Beckwith Tp	74,650.19		74,650.19
Drummond-North Elmsley Tp	113,990.96		113,990.96
Lanark Highlands Tp	1,375,468.74		1,375,468.74
Mississippi Mills, Town of	191,996.97		191,996.97
Montague Tp	162,096.90		162,096.90
Tay Valley Tp	37,070.84		37,070.84
Sub-Total	1,955,274.60	0.00	1,955,274.60
<i>Leeds & Grenville</i>			
Athens Tp/Front of Yonge Tp	194,136.98		194,136.98
Augusta Tp	126,639.64		126,639.64
Edwardsburgh-Cardinal Tp	165,869.66		165,869.66
Elizabethtown-Kitley Tp	537,279.94		537,279.94
Leeds and the Thousand Islands Tp	430,916.85		430,916.85
Merrickville-Wolford, Village of	20,316.72		20,316.72
North Grenville Tp	399,439.79		399,439.79
Rideau Lakes Tp	78,863.09		78,863.09
Sub-Total	1,953,462.67	0.00	1,953,462.67
<i>Lennox & Addington</i>			
Greater Napanee, Town of	241,340.15		241,340.15
Loyalist Tp/Stone Mills Tp	1,441,870.55		1,441,870.55
Sub-Total	1,683,210.70	0.00	1,683,210.70

Table 2

**LICENCE AND WAYSIDE PERMIT PRODUCTION
BY LOWER TIER MUNICIPALITY**

(Reported in Metric Tonnes)

Municipality	Licences	Wayside Permits	Total
Middlesex			
Adelaide Metcalfe Tp/Lucan Biddulph Tp	41,703.99		41,703.99
London, City of	2,100,543.32		2,100,543.32
Middlesex Centre Tp	895,106.69		895,106.69
North Middlesex, Municipality of	114,241.07		114,241.07
Strathroy-Caradoc Tp	33,229.70		33,229.70
Thames Centre, Municipality of	2,235,957.98		2,235,957.98
Sub-Total	5,420,782.75	0.00	5,420,782.75
Niagara			
Fort Erie, Town of/Pelham, Town of/Port Colborne, City of/ Wainfleet Tp	2,198,375.19		2,198,375.19
Lincoln, Town of/Niagara-on-the-Lake, Town of	1,427,414.81		1,427,414.81
Niagara Falls, City of	1,268,892.04		1,268,892.04
Sub-Total	4,894,682.04	0.00	4,894,682.04
Norfolk			
Norfolk, County of	369,408.01		369,408.01
Sub-Total	369,408.01	0.00	369,408.01
Northumberland			
Alnwick-Haldimand Tp	349,125.06		349,125.06
Brighton, Municipality of	263,473.68		263,473.68
Cramahe Tp	1,874,366.96		1,874,366.96
Hamilton Tp	280,165.22		280,165.22
Port Hope, Municipality of	42,463.07		42,463.07
Trent Hills, Municipality of	171,769.18		171,769.18
Sub-Total	2,981,363.17	0.00	2,981,363.17
Ottawa			
Ottawa, City of	10,729,635.36		10,729,635.36
Sub-Total	10,729,635.36	0.00	10,729,635.36
Oxford			
Blandford-Blenheim Tp	414,137.94		414,137.94
East Zorra-Tavistock Tp/Norwich Tp/Woodstock, City of	115,870.81		115,870.81
South-West Oxford Tp	751,036.63		751,036.63
Zorra Tp	3,429,588.97		3,429,588.97
Sub-Total	4,710,634.35	0.00	4,710,634.35
Peel			
Brampton, City of/Caledon, Town of/Mississauga, City of	4,251,954.06		4,251,954.06
Sub-Total	4,251,954.06	0.00	4,251,954.06
Perth			
North Perth, Town of/St. Marys, Separated Town of	161,196.62		161,196.62
Perth East Tp	315,603.30		315,603.30
Perth South Tp	1,426,261.74		1,426,261.74
West Perth Tp	199,346.50		199,346.50
Sub-Total	2,102,408.16	0.00	2,102,408.16

Table 2

**LICENCE AND WAYSIDE PERMIT PRODUCTION
BY LOWER TIER MUNICIPALITY**

(Reported in Metric Tonnes)

Municipality	Licences	Wayside Permits	Total
<i>Peterborough</i>			
Asphodel-Norwood Tp	528,446.64	375,000.00	903,446.64
Cavan-Millbrook-North Monaghan Tp	223,820.67		223,820.67
Douro-Dummer Tp	746,926.95		746,926.95
Galway-Cavendish-Harvey Tp	245,584.49		245,584.49
Havelock-Belmont-Methuen Tp	110,380.10		110,380.10
Otonabee-South Monaghan Tp	313,275.82		313,275.82
Smith-Ennismore-Lakefield Tp	650,593.16		650,593.16
Sub-Total	2,819,027.83	375,000.00	3,194,027.83
<i>Prescott & Russell</i>			
Alfred & Plantagenet Tp	226,488.42		226,488.42
Champlain Tp	280,217.44		280,217.44
Clarence-Rockland, City of	353,178.20		353,178.20
East Hawkesbury Tp	64,776.52		64,776.52
Russell Tp	227,926.63		227,926.63
The Nation, Municipality of	168,439.19		168,439.19
Sub-Total	1,321,026.40	0.00	1,321,026.40
<i>Prince Edward Co</i>			
Prince Edward, County of	2,082,506.88		2,082,506.88
Sub-Total	2,082,506.88	0.00	2,082,506.88
<i>Renfrew</i>			
Admaston-Bromley Tp/Greater Madawaska Tp/ Renfrew, Town of	154,606.53		154,606.53
Horton Tp	367,411.45		367,411.45
Laurentian Valley Tp	307,133.20		307,133.20
McNab-Braeside Tp	667,646.25		667,646.25
Petawawa, Town of	206,654.25		206,654.25
Whitewater Region Tp	97,032.23		97,032.23
Sub-Total	1,800,483.91	0.00	1,800,483.91
<i>Simcoe</i>			
Adjala-Tosorontio Tp/Barrie, City of/Collingwood, Town of	844,411.88		844,411.88
Bradford West Gwillimbury, Town of/Midland, Town of/ Wasaga Beach, Town of	436,394.84		436,394.84
Clearview Tp	1,278,811.75		1,278,811.75
Essa Tp	51,238.37		51,238.37
Innisfil, Town of	64,304.31		64,304.31
New Tecumseth, Town of	24,399.51		24,399.51
Oro-Medonte Tp	2,714,622.34		2,714,622.34
Ramara Tp	2,474,934.08		2,474,934.08
Severn Tp	1,786,986.80		1,786,986.80
Springwater Tp	1,352,619.48		1,352,619.48
Tay Tp	96,461.87		96,461.87
Tiny Tp	229,205.37		229,205.37
Sub-Total	11,354,390.60	0.00	11,354,390.60

Table 2

**LICENCE AND WAYSIDE PERMIT PRODUCTION
BY LOWER TIER MUNICIPALITY**

(Reported in Metric Tonnes)

Municipality	Licences	Wayside Permits	Total
<i>Stormont, Dundas & Glengarry</i>			
North Dundas Tp	520,471.00		520,471.00
North Glengarry Tp	178,784.30		178,784.30
North Stormont Tp	669,287.66		669,287.66
South Dundas Tp	199,214.45		199,214.45
South Glengarry Tp	298,937.99		298,937.99
South Stormont Tp	723,439.39		723,439.39
Sub-Total	2,590,134.79	0.00	2,590,134.79
<i>Sudbury District</i>			
Baldwin Tp/ St. Charles, Municipality of	28,278.00		28,278.00
French River, Municipality of/Nairn & Hyman Tp	44,925.82		44,925.82
Markstay-Warren, Municipality of	80,253.41		80,253.41
Sables Spanish Rivers Tp/Espanola, Town of	61,174.24		61,174.24
Sudbury District, Unorganized	358,458.83		358,458.83
Sub-Total	573,090.30	0.00	573,090.30
<i>Waterloo</i>			
Cambridge, City of/Kitchener, City of	1,426,491.32		1,426,491.32
North Dumfries Tp	3,336,657.95		3,336,657.95
Wellesley Tp	1,440,948.82		1,440,948.82
Wilmot Tp	1,011,651.12		1,011,651.12
Woolwich Tp	593,436.98		593,436.98
Sub-Total	7,809,186.19	0.00	7,809,186.19
<i>Wellington</i>			
Centre Wellington Tp	1,106,995.45		1,106,995.45
Erin, Town of	1,720,546.91		1,720,546.91
Guelph-Eramosa Tp	129,256.00		129,256.00
Mapleton Tp	83,939.88		83,939.88
Minto, Town of	414,571.93		414,571.93
Puslinch Tp	5,286,800.52		5,286,800.52
Wellington North Tp	167,720.97		167,720.97
Sub-Total	8,909,831.66	0.00	8,909,831.66
<i>York</i>			
East Gwillimbury, Town of	284,604.45		284,604.45
Georgina, Town of	48,793.94		48,793.94
King Tp/Vaughan, City of/Whitchurch-Stouffville, Town of	2,072,499.04		2,072,499.04
Sub-Total	2,405,897.43	0.00	2,405,897.43
GRAND TOTAL	141,176,092.75	634,280.00	141,810,372.75

Table 3

**LICENCE AND WAYSIDE PRODUCTION
BY UPPER TIER MUNICIPALITY
(Million Tonnes)**

Municipality	1994	1995	1996	1997	1998	1999	2000	2001	2002
Algoma, District of	0.5	0.5	0.6	0.6	0.6	0.8	0.8	0.6	0.8
Brant Co.	1.3	1.6	1.7	2.1	1.5	1.5	2.1	2.0	1.8
Bruce Co.	1.8	1.5	1.2	1.3	1.6	1.5	1.7	1.6	1.7
Chatham-Kent, R. M. of	0.5	0.5	0.4	0.5	0.4	0.5	0.5	0.3	0.5
Dufferin Co.	1.6	1.4	1.5	1.5	1.8	2.1	2.6	2.4	2.3
Durham, R. M. of	7.1	7.2	7.6	8.7	7.8	9.2	10.2	11.4	11.0
Elgin Co.	0.5	0.4	0.5	0.7	0.4	0.6	0.7	0.6	0.5
Essex Co.	2.7	2.4	2.2	2.7	2.0	1.9	2.0	2.2	1.9
Frontenac, Management Board	1.5	1.2	1.6	1.5	1.2	1.3	1.4	1.3	1.6
Greater Sudbury, City of	2.9	2.9	2.7	2.5	2.3	2.9	2.3	1.8	2.3
Grey Co.	2.7	2.4	2.0	2.1	2.1	2.8	2.5	2.6	2.6
Haldimand Co.	----	----	----	----	----	----	----	1.5	1.9
Haldimand-Norfolk, R. M. of	1.9	1.9	1.7	2.1	1.8	2.0	2.0	----	----
Halton, R. M. of	9.7	10.7	12.3	14.4	13.4	13.8	15.5	15.8	12.1
Hamilton, City of	3.9	4.0	4.0	5.2	4.7	4.6	6.3	6.0	5.5
Hastings Co.	1.2	1.4	1.6	2.0	1.9	2.2	2.0	2.0	2.1
Huron Co.	2.9	2.8	2.8	2.4	2.6	2.8	2.7	3.0	2.7
Kawartha Lakes, City of	----	----	----	----	----	----	----	6.4	6.4
Lambton Co.	0.6	0.6	0.4	0.5	0.6	0.6	0.5	0.5	0.7
Lanark Co.	1.1	1.3	1.2	1.2	1.3	1.5	1.6	1.7	2.0
Leeds & Grenville Co.'s	2.4	2.3	2.0	2.1	4.2	2.2	3.0	2.3	2.0
Lennox & Addington Co.	1.7	2.0	1.8	1.7	1.9	1.7	1.8	1.8	1.7
Middlesex Co.	4.9	4.5	4.5	5.3	6.1	5.6	6.4	6.0	5.4
Niagara, R. M. of	4.1	3.6	4.7	4.9	4.6	4.3	4.6	4.6	4.9
Norfolk Co.	----	----	----	----	----	----	----	0.4	0.4
Northumberland Co.	3.0	2.6	3.0	3.2	3.2	3.6	3.2	3.1	3.0
Ottawa, City of	9.3	8.4	6.1	6.7	7.1	8.1	10.7	10.1	10.7
Oxford Co.	4.6	5.0	4.6	5.3	4.9	5.1	5.4	4.9	4.8
Peel, R. M. of	3.1	3.7	3.8	4.3	4.2	4.5	5.2	5.2	4.3
Perth Co.	1.7	1.6	1.9	1.7	1.7	1.6	2.1	2.0	2.1
Peterborough Co.	2.2	1.8	1.8	1.8	1.8	1.8	2.2	2.4	3.2
Prescott & Russell Co.'s	1.9	1.3	1.2	1.4	1.1	1.2	1.4	1.4	1.3
Prince Edward Co.	1.9	2.2	1.8	2.1	2.0	2.0	2.1	2.0	2.1
Renfrew Co.	1.1	1.3	1.5	1.2	1.3	1.5	1.5	1.2	1.8
Simcoe Co.	6.2	6.8	7.4	7.6	9.0	9.0	9.3	10.6	11.4
Stormont, Dundas & Glengarry Co.'s	2.6	2.3	2.1	2.4	2.4	2.8	3.0	2.7	2.6
Sudbury, District of	0.5	0.3	0.3	0.2	0.2	0.4	0.5	1.0	0.6
Victoria Co.	5.4	4.9	6.0	6.5	6.6	6.0	7.1	----	----
Waterloo, R. M. of	5.8	5.8	5.8	5.6	5.8	7.3	7.7	8.2	7.8
Wellington Co.	5.6	4.9	6.0	6.4	6.9	7.5	8.4	8.9	8.9
York, R. M. of	1.9	2.2	2.0	2.6	2.2	2.7	3.0	2.4	2.4
TOTAL	114.3	112.2	114.3	125.0	125.2	131.5	146.0	144.9	141.8

Note: As of January 1, 2001 Victoria County is now known as The City of Kawartha Lakes.
As of January 1, 2001 Haldimand-Norfolk has been split into two different counties;
Haldimand County and Norfolk County.

Table 4

**LICENCE PRODUCTION IN 2002
THE TOP TEN PRODUCING MUNICIPALITIES
(Rounded to nearest million tonnes)**

	Municipality	County/Region	2002 Production	Production				
				2001	2000	1999	1998	1997
1	City of Ottawa ⁽¹⁾	City of Ottawa	10.7	10.1	10.6	8.1	7.1	6.7
2	City of Kawartha Lakes ⁽²⁾	City of Kawartha Lakes	6.4	6.4	7.1	6.0	6.6	6.5
3	City of Burlington/ Town of Halton Hills	Halton	6.3	7.0	6.5	6.1	5.5	4.7
4	Town of Milton	Halton	5.9	8.8	9.0	7.7	7.9	9.6
5	City of Hamilton ⁽³⁾	City of Hamilton	5.4	6.0	6.3	4.6	4.7	5.2
6	Puslinch Township	Wellington County	5.3	5.5	4.1	3.9	3.8	3.5
7	Township of Uxbridge	Durham	4.7	5.0	4.1	3.4	3.2	3.1
8	Municipality of Clarington	Durham	4.7	4.7	4.3	3.8	3.0	3.9
9	Cities of Brampton/Mississauga/ Town of Caledon	Peel	4.3	5.2	5.2	4.5	4.2	4.3
10	Zorra Township	Oxford	3.4	3.5	3.8	4.1	3.8	3.8
Total			57.1	62.2	61.0	52.2	49.8	51.3

Note: Municipalities are ranked in order of their licenced production for 2002

Production statistics for 1997 - 2000 include tonnage of the pre-amalgamated cites and townships of :

⁽¹⁾ Cities of Ottawa, Gloucester and Neapean, Townships of Cumberland, Goulborn, Osgoode, Rideau and West Carleton

⁽²⁾ Townships of Bexley, Laxton, Digby & Longford, Bobcaygeon, Carden/Dalton, Eldon, Emily, Fenelon, Manvers, Mariposa, Somerville

⁽³⁾ Cities of Hamilton and Stoney Creek, Towns of Ancaster, Dundas and Glanbrook

Table 5

NUMBER AND TYPE OF AGGREGATE LICENCES

District	No. of Licences	Category		Type of Operation			
		Class A	Class B	Pit	Quarry	Pit & Quarry	Underwater
Aurora (GTA)	175	151	24	159	16	0	0
Aylmer	310	231	79	293	11	6	0
Bancroft	42	17	25	23	14	5	0
Guelph (Cambridge)	464	377	87	429	32	3	0
Kemptville	506	270	236	367	117	21	1
Midhurst	463	339	124	421	38	4	0
Pembroke	111	56	55	98	7	6	0
Peterborough (Tweed)	496	269	227	397	84	15	0
Sault Ste. Marie	69	31	38	63	1	5	0
Sudbury	140	97	43	116	6	18	0
TOTAL	2,776	1,838	938	2,366	326	83	1

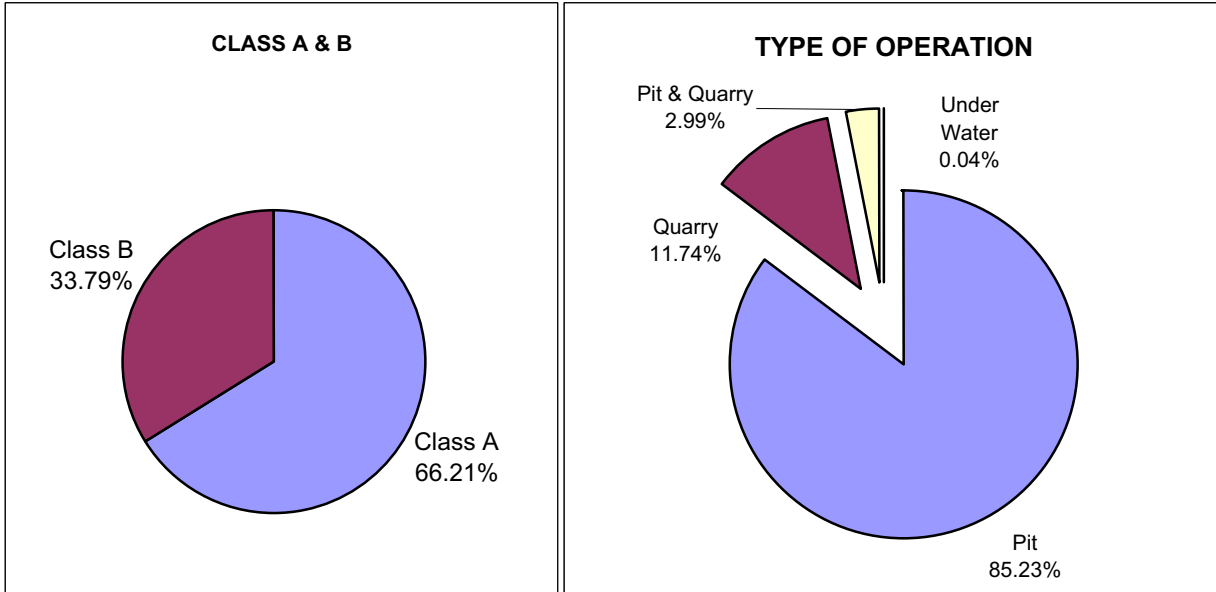


Table 6

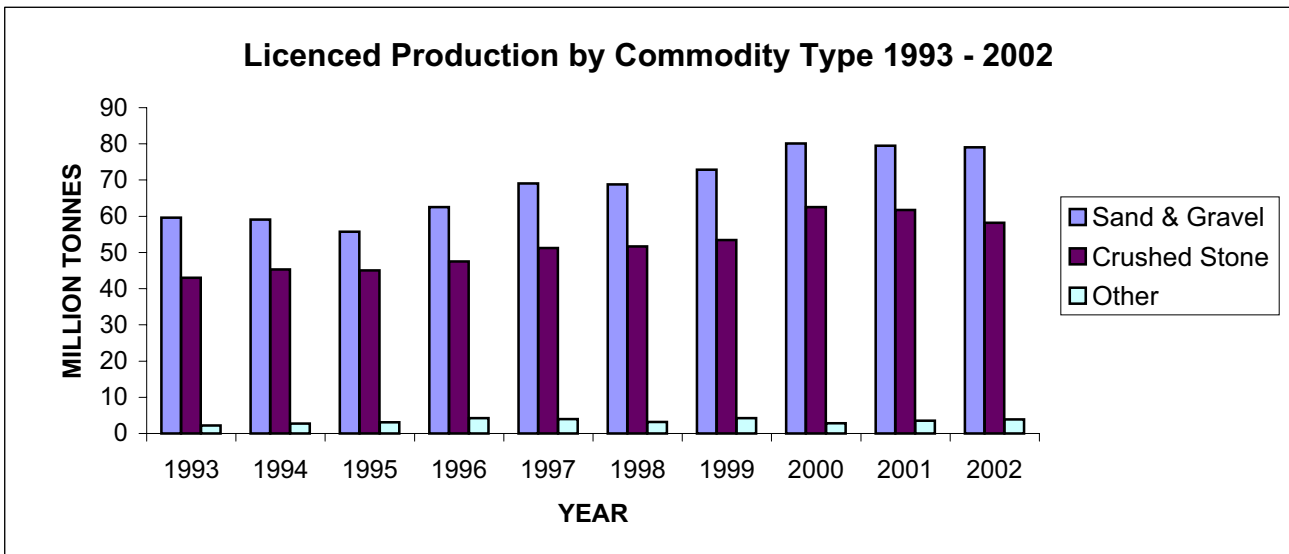
**2002 LICENCED AGGREGATE PRODUCTION
BY COMMODITY TYPE
(Reported by MNR District)**

District	Total	Sand & Gravel	Crushed Stone	Clay/ Shale	Other Stone
Aurora (GTA)	29,841,766.72	14,820,163.97	13,208,989.26	1,276,508.58	536,104.91
Aylmer	14,082,866.40	10,315,487.97	3,757,527.86	1,720.57	8,130.00
Bancroft	2,294,702.29	115,826.69	2,134,217.23	7,584.24	37,074.13
Guelph (Cambridge)	35,831,121.17	23,169,403.43	12,526,462.53	131,683.37	3,571.84
Kemptville	18,465,824.82	5,888,725.89	11,617,941.25	107,727.62	851,430.06
Midhurst	17,689,512.78	11,989,243.95	5,413,397.96	109,312.70	177,558.17
Pembroke	1,884,192.91	1,262,495.49	210,039.05	0.00	411,658.37
Peterborough	17,407,777.84	8,446,785.48	8,905,719.79	40,654.73	14,617.84
Sault Ste. Marie	828,143.34	777,740.11	32,923.86	0.00	17,479.37
Sudbury	2,850,184.48	2,305,399.76	387,166.66	64,641.92	92,976.14
TOTAL	141,176,092.75	79,091,272.74	58,194,385.45	1,739,833.73	2,150,600.83

Note: Totals may not equal due to rounding

Other Stone includes building stone, industrial stone, dimensional stone

Reported in metric tonnes



**Yearly Production for Aggregate Licences
(in Million Tonnes)**

	Total	Sand & Gravel	Crushed Stone	Other
1993	104.85	59.62	43.04	2.19
1994	107.11	59.07	45.28	2.76
1995	103.80	55.70	45.01	3.09
1996	114.27	62.52	47.48	4.27
1997	124.29	69.05	51.23	4.01
1998	123.68	68.84	51.64	3.20
1999	130.53	72.87	53.40	4.26
2000	145.49	80.07	62.57	2.85
2001	144.76	79.46	61.76	3.54
2002	141.17	79.09	58.19	3.89

Table 7

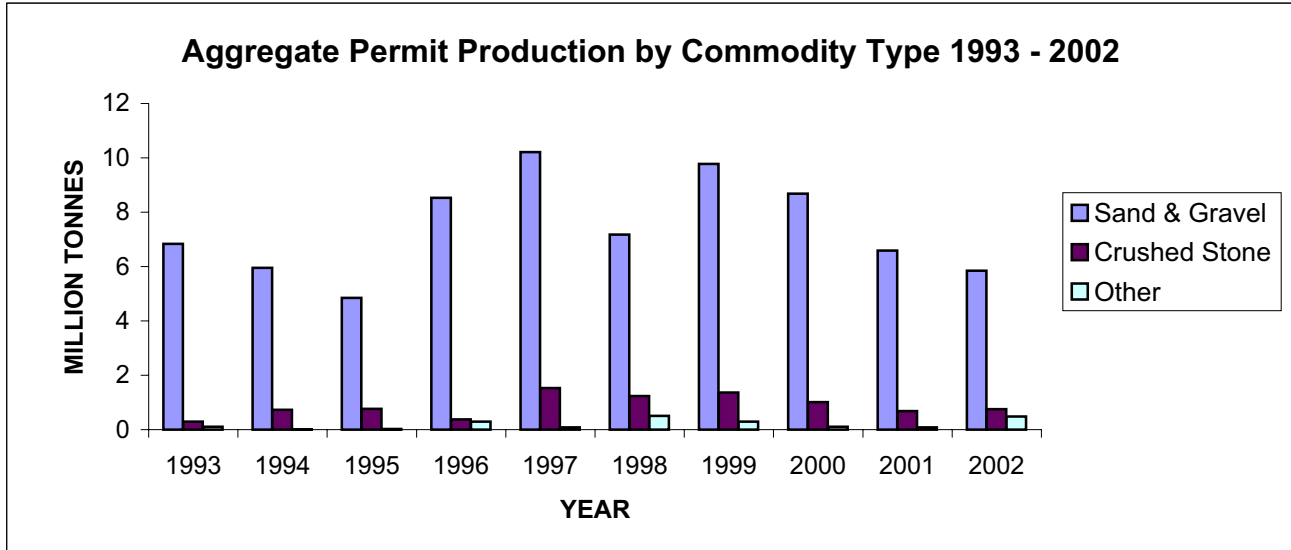
**2002 AGGREGATE PERMIT PRODUCTION
BY COMMODITY TYPE
(Reported by MNR District)**

Region/District	Total Production	Sand & Gravel	Crushed Stone	Clay/Shale	Other Stone
NORTHEAST					
Chapleau	130,881.05	130,881.05	-	-	-
Cochrane	665,035.93	526,949.61	127,689.32	-	10,397.00
Hearst	250,088.00	243,482.00	6,606.00	-	-
Kirkland Lake	218,564.84	218,433.84	131.00	-	-
North Bay	362,777.69	351,595.44	10,626.00	-	556.25
Sault Ste. Marie	145,691.90	142,881.66	-	2,600.00	210.24
Sudbury	340,474.29	227,216.50	107,118.42	-	6,139.37
Timmins	333,959.85	244,626.34	-	-	89,333.51
Wawa	691,883.71	536,763.71	59,593.00	95,527.00	-
Sub-Total	3,139,357.26	2,622,830.15	311,763.74	98,127.00	106,636.37
NORTHWEST					
Dryden	617,343.42	430,764.04	-	-	186,579.38
Fort Frances	615,169.18	569,342.10	622.88	-	45,204.20
Kenora	155,897.18	143,697.67	-	-	12,199.51
Nipigon	619,441.38	556,670.90	59,110.00	1,600.00	2,060.48
Red Lake	221,034.44	218,819.24	1,107.00	-	1,108.20
Sioux Lookout	349,949.91	349,503.83	-	-	446.08
Thunder Bay	370,156.85	370,141.54	-	-	15.31
Sub-Total	2,948,992.36	2,638,939.32	60,839.88	1,600.00	247,613.16
SOUTHCENTRAL					
Algonquin Park	83,695.00	83,695.00	-	-	-
Aurora (GTA)	-	-	-	-	-
Aylmer	821.01	821.01	-	-	-
Bancroft	199,849.38	56,885.78	120,101.90	265.20	22,596.50
Guelph (Cambridge)	-	-	-	-	-
Kemptville	101,285.81	101,285.81	-	-	-
Midhurst	4,668.00	4,668.00	-	-	-
Parry Sound	473,148.54	236,845.91	235,414.18	-	888.45
Pembroke	104,866.00	104,866.00	-	-	-
Peterborough (Tweed)	25,370.00	-	25,370.00	-	-
Sub-Total	993,703.74	589,067.51	380,886.08	265.20	23,484.95
TOTAL	7,082,053.36	5,850,836.98	753,489.70	99,992.20	377,734.48

Note: Amounts shown are in metric tonnes

Table 7

**2002 LICENCED AGGREGATE PERMIT PRODUCTION
BY COMMODITY TYPE
(Reported by MNR District)**



**Yearly Production for Aggregate Permits
(in Million Tonnes)**

	Total	Sand & Gravel	Crushed Stone	Other
1993	7.24	6.83	0.30	0.11
1994	6.69	5.95	0.73	0.01
1995	5.63	4.85	0.76	0.02
1996	9.21	8.53	0.38	0.30
1997	11.82	10.21	1.53	0.08
1998	8.92	7.18	1.23	0.51
1999	11.44	9.78	1.37	0.29
2000	9.80	8.68	1.01	0.11
2001	7.35	6.59	0.68	0.08
2002	7.08	5.85	0.75	0.48

Table 8

**2002 AGGREGATE PERMIT PRODUCTION
BY COMMODITY TYPE
(Reported by CPCA* Geographic Areas)**

Area	Total	Sand & Gravel	Crushed Stone	Clay/ Shale	Other Stone
Southwest (1)	821	821	0	0	0
Peninsula (2)	0	0	0	0	0
West Central (3)	4,668	4,668	0	0	0
GTA (4)	0	0	0	0	0
East Central (5)	225,219	56,886	145,472	265	22,597
East (6)	206,152	206,152	0	0	0
Northeast (7)	3,004,317	2,406,607	487,585	2,600	107,525
Northwest (8)	3,640,876	3,175,703	120,433	97,127	247,613
TOTAL	7,082,053	5,850,837	753,490	99,992	377,734

Note: Totals may not equal due to rounding
 Other Stone includes building stone, industrial stone, dimensional stone
 Amounts shown are in metric tonnes

*CPCA - Canadian Portland Cement Association

**2002 AGGREGATE LICENCE PRODUCTION
BY COMMODITY TYPE
(Reported by CPCA* Geographic Areas)**

Area	Total	Sand & Gravel	Crushed Stone	Clay/ Shale	Other Stone
Southwest (1)	18,551,722	13,924,131	4,538,398	80,383	8,810
Peninsula (2)	14,426,808	2,628,194	11,745,592	53,021	0
West Central (3)	34,624,971	28,921,810	5,413,398	109,313	180,450
GTA (4)	29,841,767	14,820,164	13,208,989	1,276,509	536,105
East Central (5)	16,383,430	8,113,338	8,191,070	37,673	41,349
East (6)	23,669,068	7,600,496	14,676,847	118,294	1,273,431
Northeast (7)	2,850,184	2,305,400	387,167	64,642	92,976
Northwest (8)	828,143	777,740	32,924	0	17,479
TOTAL	141,176,093	79,091,273	58,194,385	1,739,834	2,150,601

Note: Totals may not equal due to rounding
 Other Stone includes building stone, industrial stone, dimensional stone
 Amounts shown are in metric tonnes

*CPCA - Canadian Portland Cement Association

Table 9

**REHABILITATION OF
LICENCED AGGREGATE SITES IN 2002
(Reported by MNR District)**

District	Total No. of Licences	Total Licenced Area	Original Disturbed Area	New Disturbed Area	New Rehab. Area	Total Disturbed Area
Aurora (GTA)	175	9,414.74	3,693.40	126.64	146.88	3,673.16
Aylmer	311	8,360.20	3,069.73	102.50	105.40	3,066.83
Bancroft	36	1,597.06	291.77	8.12	2.20	297.69
Guelph (Cambridge)	463	16,547.33	4,489.75	180.29	151.92	4,518.12
Kemptville	506	14,138.45	3,883.42	161.55	73.36	3,971.61
Midhurst	463	13,263.24	3,321.39	158.50	108.77	3,371.12
Pembroke	110	3,282.57	420.23	41.43	6.53	455.13
Peterborough (Tweed)	503	13,286.81	3,332.23	124.82	61.72	3,395.33
Sault Ste. Marie	69	2,939.66	326.62	6.59	5.54	327.67
Sudbury	140	10,018.88	784.58	35.93	19.05	801.46
TOTAL	2,776	92,848.94	23,613.12	946.37	681.37	23,878.12

Note: Areas shown are in hectares

These statistics are compiled from information supplied by licencees and are not independently checked for accuracy.

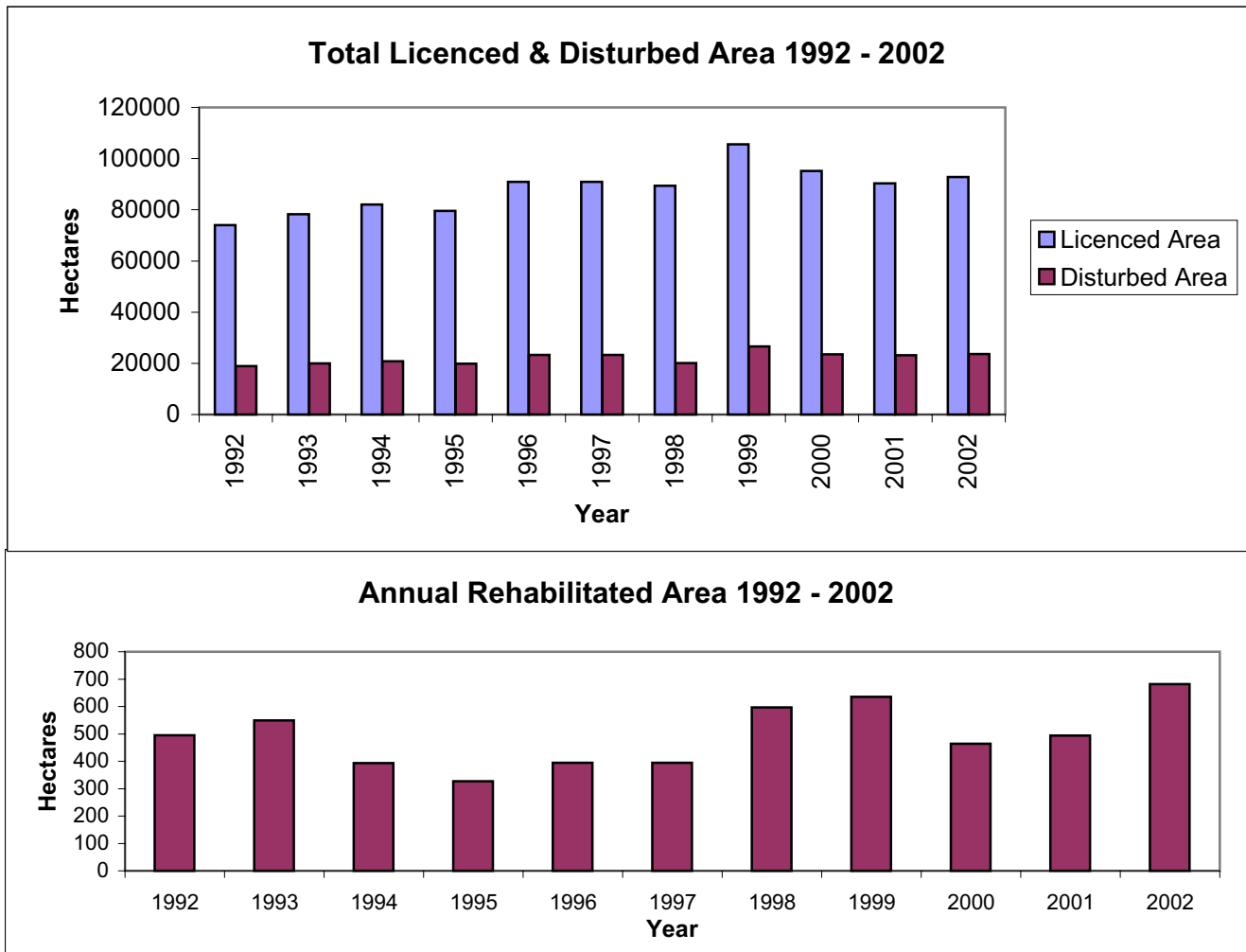


Table 10

**NUMBER AND TYPE OF AGGREGATE PERMITS
(Reported by MNR District)**

Region/District	Total Hectarage	Total No. of Permits	Pit	Quarry	Pit & Quarry	Underwater
NORTHEAST						
Chapleau	717.47	194	194	0	0	0
Cochrane	2,560.24	117	105	7	5	0
Hearst	2,987.16	161	144	16	1	0
Kirkland Lake	1,696.64	157	151	4	2	0
North Bay	2,199.76	205	185	15	5	0
Sault Ste. Marie	753.01	112	109	2	1	0
Sudbury	4,019.35	182	155	17	10	0
Timmins	1,697.62	163	155	7	1	0
Wawa	2,100.81	255	251	2	2	0
Sub-Total	18,732.06	1,546	1,449	70	27	0
NORTHWEST						
Dryden	1,891.83	226	215	7	4	0
Fort Frances	2,084.55	275	264	5	6	0
Kenora	2,619.92	191	163	22	6	0
Nipigon	3,236.33	321	306	14	1	0
Red Lake	1,243.21	113	112	1	0	0
Sioux Lookout	1,222.95	79	79	0	0	0
Thunder Bay	1,833.08	197	184	11	2	0
Sub-Total	14,131.87	1,402	1,323	60	19	0
SOUTHCENTRAL						
Algonquin Park	21.72	32	32	0	0	0
Aurora (GTA)	0.00	0	0	0	0	0
Aylmer	0.10	1	0	0	0	1
Bancroft	871.21	79	69	10	0	0
Guelph (Cambridge)	620.50	2	0	0	0	2
Kemptville	7.00	2	1	0	0	1
Midhurst	1.00	1	0	0	0	1
Parry Sound	640.17	105	79	13	3	10
Pembroke	119.60	44	43	1	0	0
Peterborough (Tweed)	5.00	1	0	0	1	0
Sub-Total	2,286.30	267	224	24	4	15
TOTAL	35,150.23	3,215	2,996	154	50	15

APPENDIX A

GLOSSARY OF TERMS

For actual definitions, please refer to the Aggregate Resources Act.

Active Licence

A licence that has been issued, being transferred, or under suspension at the end of the calendar year.

Aggregate

Includes sand, gravel, limestone, dolostone, crushed stone, rock other than metallic ores, and other prescribed material.

Aggregate Permit

A permit for a pit or quarry issued under the Aggregate Resources Act allowing for the excavation of aggregate that is the property of the Crown, on land where the surface rights are the property of the Crown, or from land under water. There are three types of aggregate permits, they are commercial, public authority and personal.

ALPS

The Aggregate Licence and Permit System (ALPS) is an automated data base that facilitates the management of mineral aggregate production and related information, for individual licences, aggregate permits and wayside permits across the province.

Building Dimension

A slab or block of rock, flagstone if foliated and dimension stone if massive, generally rectangular, and cut to specified measurements for ornamental surfacing in buildings or other construction applications.

Clay/Shale

Clay is a fine-grained, natural, earthy material composed primarily of hydrous aluminum silicates. It is plastic when moist and hardens when dried. Shale is fine-grained sedimentary laminated rock predominantly composed of clay grade and other fine minerals.

Class A Licence

A licence under the Aggregate Resources Act to allow excavation of more than 20,000 tonnes of aggregate annually from a pit or quarry within parts of Ontario that have been designated under the Aggregate Resources Act.

Class B Licence

A licence under the Aggregate Resources Act to allow excavation of 20,000 tonnes or less of aggregate annually from a pit or quarry within parts of Ontario that have been designated under the Aggregate Resources Act.

Crown Land

Ownership of land which is vested in the Crown or owned by the Province of Ontario.

Crushed Stone

Rock or stone mechanically crushed to specified sizes and grading.

Designated Area

An area of the Province identified by regulation under the Aggregate Resources Act where a person requires a licence for the excavation of aggregate from private land.

Disturbed Area

An area within a site that has been, or is being excavated to operate a pit or quarry, and has not been rehabilitated.

Gravel

Small stones and pebbles or a mixture of sand and small stones. More specifically, fragments of rock worn by the action of air and water, larger and coarser than sand. MTO specifications define gravel as unconsolidated granular material greater than 4.75mm.

Housing Starts

The number of housing units started where construction has advanced to 100 per cent of footings. In case of multiple dwellings, a "start" implies the commencement of individual structures.

Inactive Licence

A licence that has been revoked or surrendered prior to the end of the calendar year.

Licence

A licence for a pit or quarry issued under the Aggregate Resources Act allowing for the extraction of aggregate in designated areas.

Licensed Area

A specific area for which a licence has been issued for the extraction of mineral aggregates under the Aggregate Resources Act.

Pit

Land or land under water from which unconsolidated aggregate is being or has been excavated, and has not been rehabilitated.

Private Land

Land owned by an individual or corporation, as opposed to land which is owned by the Crown.

Progressive Rehabilitation

As per the requirements of the Aggregate Resources Act, sequential rehabilitation completed within reasonable time over disturbed land from which aggregate has been extracted. The rehabilitation is carried out according to the Act, the regulations, the site plan, and the conditions of the licence or permit during the period that aggregate is being extracted.

Pits & Quarries Control Act

An Act to manage and regulate mineral aggregate extraction in Ontario. The Act had been automatically repealed and replaced by the Aggregate Resources Act as of January 1, 1990.

Quarry

Land or land under water from which consolidated rock is or has been excavated and the site has not been rehabilitated.

Rehabilitation

To treat the land from which aggregate has been excavated to a pre-excitation condition or use, or to a condition compatible with adjacent land.

Royalty

A payment made to the Crown in recognition of the extraction of aggregates owned by the Crown. Under the Aggregate Resources Act, the royalty is set at a minimum of 25 cents per tonne. The Minister may set a higher rate or may allow exemption.

Sand

Any hard granular rock material finer than gravel and coarser than dust. MTO specifications define sand as granular material ranging in size from .075mm to 4.75 mm.

Wayside Permit

A permit issued to a public authority or a person who has a contract with a public authority for a temporary road project or an urgent project for which no alternative source of aggregate is available under licence or permit. A wayside permit expires 18 months from the date of issue or upon completion of the project, whichever comes first.

APPENDIX B

**HISTORICAL DESIGNATION OF PRIVATE LAND UNDER THE
PITS AND QUARRIES CONTROL ACT AND
THE AGGREGATE RESOURCES ACT
(by Geographic Twp)**

Designations under the Pits and Quarries Control Act (1971-1989)

DECEMBER 19, 1971

Adjala	Euphrasia	Nottawasaga
Albemarle	Flamborough East	Osprey
Albion	Flamborough West	Pelham
Amabel	Grantham	Reach
Ancaster	Grimsby North	Saltfleet
Artemesia	Holland	Stamford
Barton	Keppel	St. Edmunds
Beverly	Lindsay	St. Vincent
Caledon	London	Sydenham
Chinguacousy	Louth	Thorold
Clinton	Melancthon	Toronto Gore
Collingwood	Mono	Trafalgar
Derby	Mulmur	Westminster
Eastnor	Nassagaweya	West Nissouri
Erin	Nelson	Whitby
Esquesing	Niagara	Whitchurch

MARCH 3, 1972

Brock	Lobo	Pickering
East Whitby	Markham	Toronto
Gloucester	Nepean	Vaughan
Hallowell	Osgoode	

MAY 9, 1972

Brantford	Pittsburgh	South Dumfries
Guelph	Puslinch	Waterloo
Kingston	North Dumfries	

AUGUST 15, 1973

Anderdon	Dereham	Humberstone
Bertie	Dunn	Huntley
Blenheim	Eramosa	King
Brighton	Fitzroy	Malden
Clarke	Gosfield South	Manvers
Colchester North	Gosfield North	March
Colchester South	Haldimand	Mersea
Cramahe	Hamilton	Murray
Crowland	Harwich	Nichol
Darlington	Hope	North Cayuga

North Gower
North Oxford
Oneida
Orillia
Oro
Pilkington
Raleigh
Romney

Sidney
Sunnidale
Thurlow
Tilbury East
Tyendinaga
Uxbridge
Vespra
Walpole

Wellesley
West Oxford
Willoughby
Wilmot
Woodhouse
Woolwich
Yarmouth

FEBRUARY 15, 1974

Delaware
North Dorchester

MAY 17, 1974

Pelee

MAY 1, 1975

Alnwick
Amaranth
Arran
Arthur
Asphodel
Balfour
Bayham
Belmont
Bexley
Biddulph
Binbrook
Blandford
Blanshard
Blezard
Bowell
Broder
Burford
Caistor
Camden
Capreol
Cartwright
Cavan
Charlotteville
Chatham
Creighton
Cumberland
Denison
Dieppe
Dill
Douro
Dover
Dowling
Drury

Dryden
Dummer
East York
East Garafraxa
East Nissouri
East Luther
East Gwillimbury
East Oxford
East Zorra
Eldon
Emily
Ennismore
Essa
Etobicoke
Fairbank
Falconbridge
Fenelon
Flos
Gainsborough
Garson
Georgina
Glanford
Glenelg
Goulburn
Graham
Hanmer
Harvey
Houghton
Howard
Hutton
Innisfil
Levack
Lorne

Louise
Lumsden
MacLennan
Maidstone
Malahide
Mara
Mariposa
Marlborough
Maryborough
Matchedash
McKim
Medonte
Middleton
Minto
Morgan
Moulton
Neelon
Norman
North Monaghan
North Walsingham
North Norwich
North Gwillimbury
North York
Oakland
Onondaga
Ops
Orford
Otonabee
Peel
Percy
Proton
Rainham
Rama

Rawden
Rayside
Rochester
Sandwich, East
Sandwich, West
Scarborough
Scott
Scugog
Seneca
Seymour
Sherbrooke
Smith
Snider
South Walsingham

South Cayuga
South Dorchester
South Grimsby
South Norwich
South Monaghan
Sullivan
Tay
Tecumseh
Thorah
Tilbury, North
Tilbury, West
Tiny
Torbolton
Tosorontio

Townsend
Trill
Tuscarora
Verulam
Wainfleet
Waters
West Luther
West Garafraxa
West Gwillimbury
West Zorra
Windham
Wisner
York
Zone

APRIL 6, 1976

Great LaCloche Island
Little LaCloche Island

AUGUST 27, 1976

Avenge
Bosanquet
Carden

Korah
Parke
Prince

Rankin
St. Mary's
Tarentorus

JANUARY 1, 1981

Adelaide
Aldborough
All of the County of Perth
All of the County of Huron
All of the County of Lanark
Ameliasburgh
Athol
Bentinck
Brant
Brooke
Bruce
Carrick
City of Belleville
Culross
Dawn
Dunwich
E. Williams
Egremont
Elderslie
Elzevir and Grimsthorpe

Enniskillen
Euphemia
Exfrid
Greenock
Hillier
Hungerford
Huntingdon
Huron
Kincardine
Kinloss
Madoc
Marmora and Lake
McGillivray
Moore
Mosa
Normanby
North Marysburgh
Plympton
Sarnia
Saugeen

Separated Town of Trenton
Sombra
Sophiasburgh
South Marysburgh
Southwold
Town of Deseronto
Tudor
United Counties of Prescott
and Russell
United Counties of Stormont,
Dundas & Glengarry
United Counties of Leeds and
Grenville
Villages of Deloro, Frankford,
Madoc, Marmora, Stirling
and Tweed
W. Williams
Walford
Warwich
Wyoming

JULY 1, 1984

Storrington

Designations under the Aggregate Resources Act (Jan. 1, 1990)

APRIL 1, 1992

Adolphustown	Howe Island	Somerville
Amherst Island	Laxton	South Fredericksburgh
Bedford	Longford	Town of Napanee
Camden East	Loughborough	Villages of Bath and
Dalton	North Fredericksburgh	Newburgh
Digby	Portland	Wolfe Island
Ernestown	Richmond	

SEPTEMBER 1, 1993

Admaston		Towns of Arnprior and
Alice and Fraser	McNab	Renfrew
Bagot and Blithfield	Pembroke	Villages of Beachburg,
Bromley	Petawawa	Braeside, Cobden and
City of Pembroke	Ross	Petawawa
Horton	Stafford	Westmeath

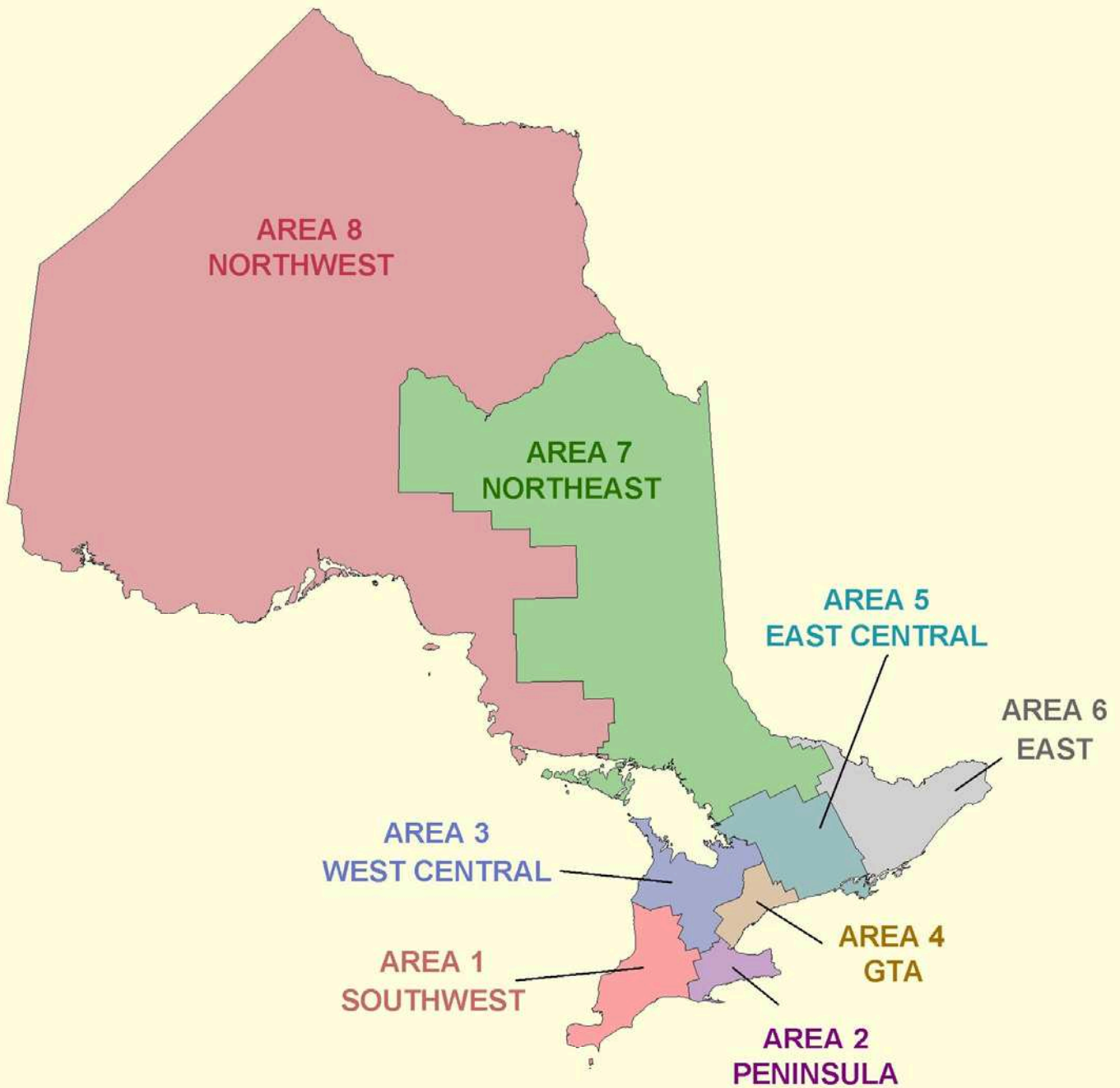
JANUARY 1, 1998

Anderson	Gaudette	Ley
Appleby	Gough	Loughrin
Archibald	Hagar	Macdonald
Aweres	Hallam	May
Awrey	Harrow	McKinnon
Baldwin	Harty	Meredith and Aberdeen
Burwash	Haviland	Additional
Cartier	Hawley	Merritt
Cascaden	Hendrie	Mongowin
Casimir	Henry	Nairn
Chesley Additional	Herrick	Pennefather
Cleland	Hess	Ratter
Cosby	Hilton	Secord
Curtin	Hodgins	Servos
Delamere	Hoskin	Shakespeare
Dennis	Hyman	Shields
Deroche	Jarvis	St. Joseph
Duncan	Jennings	Street
Dunnet	Jocelyn	Tarbutt and Tarbutt
Eden	Johnson	Additional
Fenwick	Kars	Tilley
Fisher	Kehoe	Tilton
Foster	Laird	Tupper
Foy	Laura	VanKoughnet

DECEMBER 4, 1999

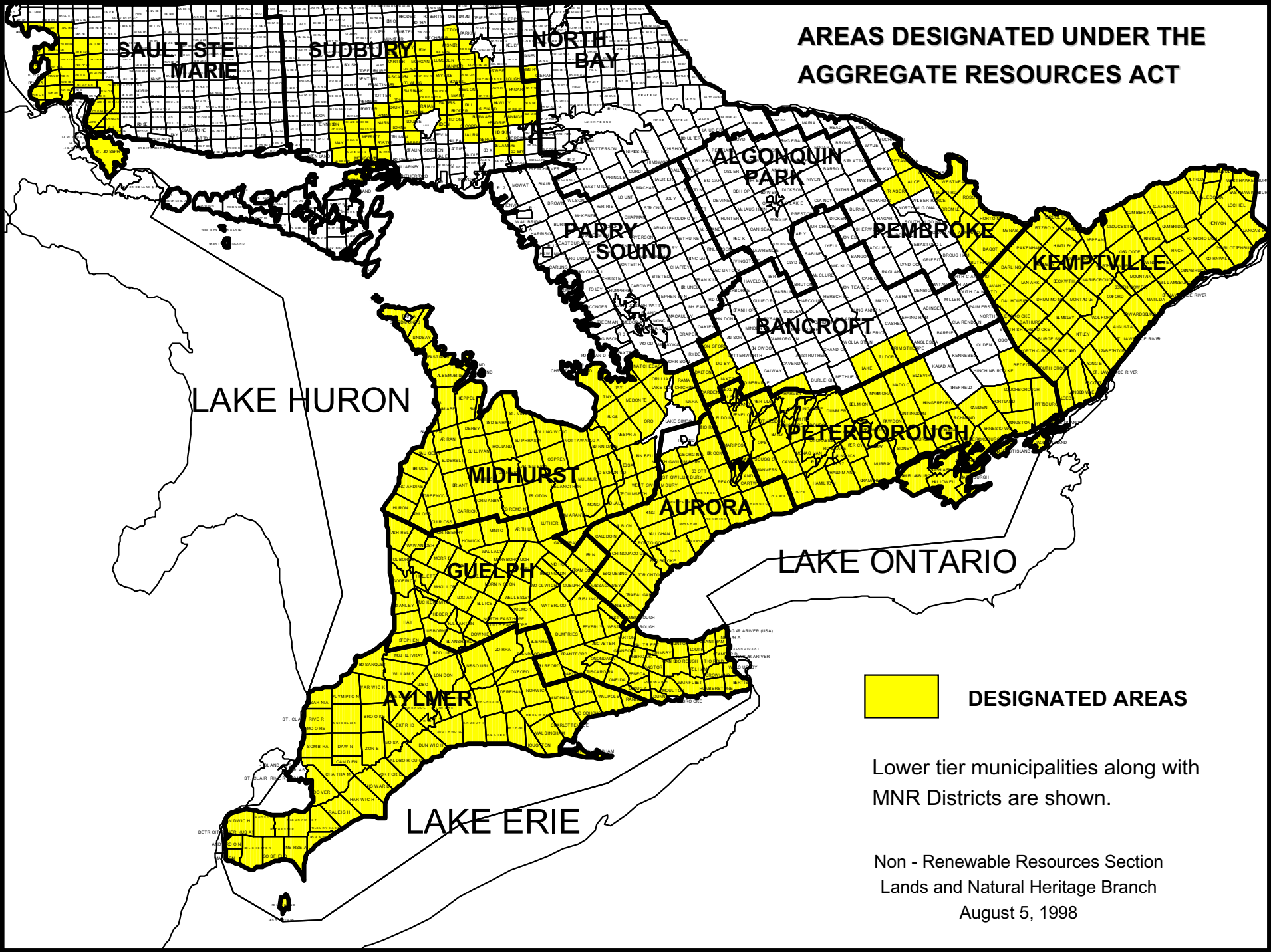
Village of Hilton Beach

CANADIAN PORTLAND CEMENT ASSOCIATION GEOGRAPHIC AREAS



Area 1 Southwest	Area 2 Peninsula	Area 3 West Central	Area 4 GTA	Area 5 East Central	Area 6 East	Area 7 Northeast	Area 8 Northwest
Essex	Niagara	Bruce	Metro Toronto	Kawartha Lakes	Prescott & Russell	Nipissing	Algoma
Chatham-Kent	Brant	Grey	Peel	Peterborough	Leeds & Grenville	Parry Sound	Thunder Bay
Lambton	Haldimand	Simcoe	York	Haliburton	Stormont, Dundas, & Glengarry	Timiskaming	Kenora
Elgin	Norfolk	Dufferin	Durham	Northumberland	Frontenac	Cochrane	Rainy River
Middlesex	Hamilton	Wellington	Halton	Hastings	Greater Ottawa	Sudbury District	
Huron		Waterloo		Prince Edward	Lanark	Greater Sudbury	
Perth				Muskoka	Renfrew	Manitoulin	
Oxford					Lennox & Addington		

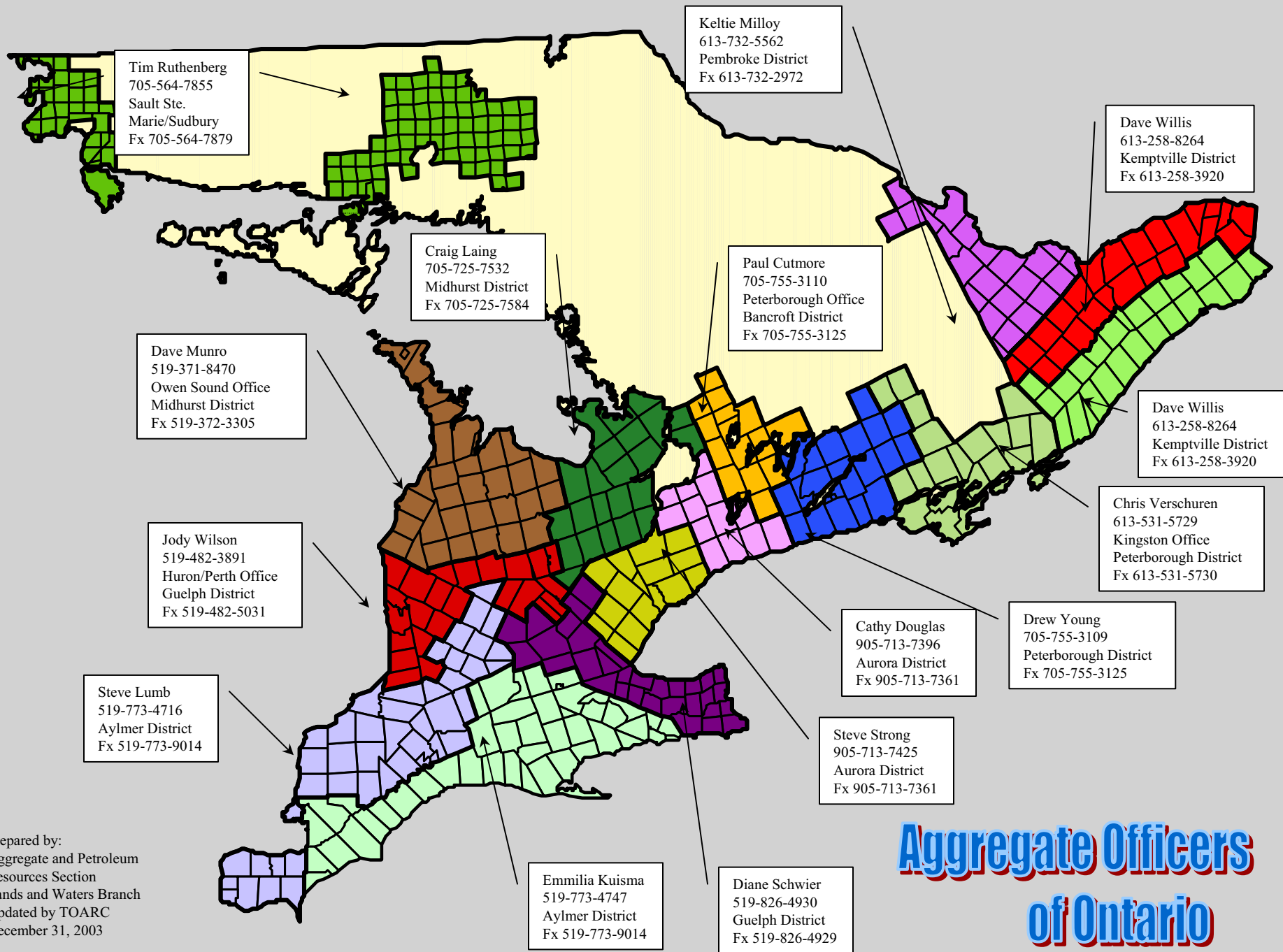
**AREAS DESIGNATED UNDER THE
AGGREGATE RESOURCES ACT**



 **DESIGNATED AREAS**

Lower tier municipalities along with
MNR Districts are shown.

Non - Renewable Resources Section
Lands and Natural Heritage Branch
August 5, 1998



Prepared by:
 Aggregate and Petroleum
 Resources Section
 Lands and Waters Branch
 Updated by TOARC
 December 31, 2003

Aggregate Officers of Ontario