

AGGREGATE RESOURCES STATISTICS IN ONTARIO

PRODUCTION STATISTICS 2020

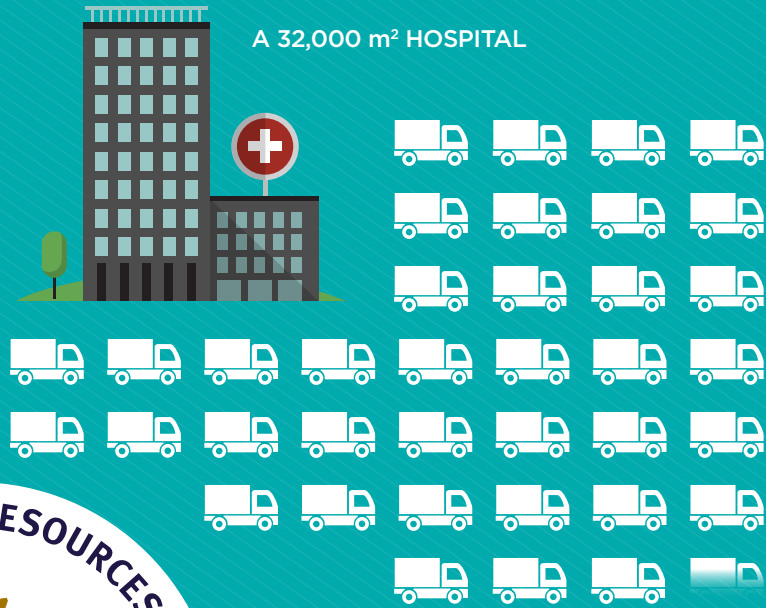
AGGREGATE FOUNDATIONS:

1,760 TRUCKLOADS

3,760 TRUCKLOADS

1KM 1 KM OF 4-LANE HIGHWAY

A 32,000 m² HOSPITAL



4,560

TRUCKLOADS

14
TONS

1KM 1 KM OF SUBWAY LINE



EVERY ONTARIAN USES
14 TONNES OF STONE, SAND
AND GRAVEL EACH YEAR.

AGGREGATE RESOURCES STATISTICS IN ONTARIO

PRODUCTION STATISTICS

2020

Prepared by

The Ontario Aggregate Resources Corporation

TABLE OF CONTENTS

Overview	1
----------------	---

TABLES AND GRAPHS

1. Aggregate Production in Ontario 2008-2020	2
2. Licence and Wayside Permit Production by Lower Tier Municipality	3
3. Licence and Wayside Permit Production by Upper Tier Municipality	11
4. The Top 10 Producing Municipalities	12
5. Number and Type of Aggregate Licences	13
6. Licenced Aggregate Production by Commodity Type (NDMNRF Districts)....	14
7. Aggregate Permit Production by Commodity Type (NDMNRF Districts)	15
8. Aggregate Permit Production by Commodity Type (by year)	16
9. Aggregate Permit & Licence Production (CAC Geographic Areas)	17
10. Rehabilitation of Licenced Aggregate Sites	18
11. Number and Type of Aggregate Permits	19

APPENDICES

- A. Glossary of Terms
- B. Historical Designation of Private Land under the Pits and Quarries Control Act and the Aggregate Resources Act
- C. CPCA (now CAC) Geographic Areas
- D. Map of Areas Designated under the Aggregate Resources Act
- E. Map of NDMNRF Aggregate Technical Specialists of Ontario

Additional copies of this report may be obtained at a cost of \$5.00 each to cover preparation and postage from:

The Ontario Aggregate Resources Corporation
1001 Champlain Avenue, Suite 103
Burlington, ON L7L 5Z4
Toll Free 1-866-308-6272
or Telephone (905) 319-7424
or Fax (905) 319-7423

Cette publication spécialisée n'est disponible qu'en anglais

For internal use only.

*In order for TOARC to better meet the needs of those using this publication,
we welcome any comments or suggestions.*

You may send your comments/suggestions to the attention of John DeRick,
Database Administrator at the above address or fax number or contact him directly via
email, jrderick@toarc.com

AGGREGATE RESOURCES STATISTICS IN ONTARIO

Overview

Aggregate resources are used in the everyday lives of all Ontario residents, and make up an integral part of our roads, sidewalks, sewers, subway tunnels and airports, as well as our homes, offices, hospitals, schools and shopping centres. On average, Ontarians use about 14 tonnes of aggregate per person per year.

The aggregate industry plays a foundational role within the Ontario economy. The economic activity generated by the industry begins with the aggregate production itself but also feeds industries which receive and use the raw materials: including cement and concrete products, other aggregate-based products (asphalt, chemical, clay, glass, etc.) and construction.

In 2020, there were 3,599 licences for pits and quarries on private land in areas designated under the Aggregate Resources Act (refer to Appendix D – Map of Areas Designated), 2,471 aggregate permits on Crown land and 1 wayside permit.

Aggregate Production

Production of mineral aggregates in 2020 totaled just under 168 million tonnes, an increase of 6.5 million tonnes or +4.1% greater than the tonnage reported in the previous year. Production from licenced operations was up 6.4 million tonnes or +4.2% compared to 2019 (157.9 million in 2020 from 151.5 million tonnes in 2019). Forestry Aggregate Pits (formerly Category 14) pit production has remained the same. Wayside permit production was unchanged on small volumes (0.20 million in 2020 and 2019). Production from aggregate permits on Crown Land increased (2.60%) from 2019 (5.54 million in 2020 from 5.4 million tonnes in 2019).

Note: Totals and percentage changes are based on numbers from Table 1 format.

Table 1

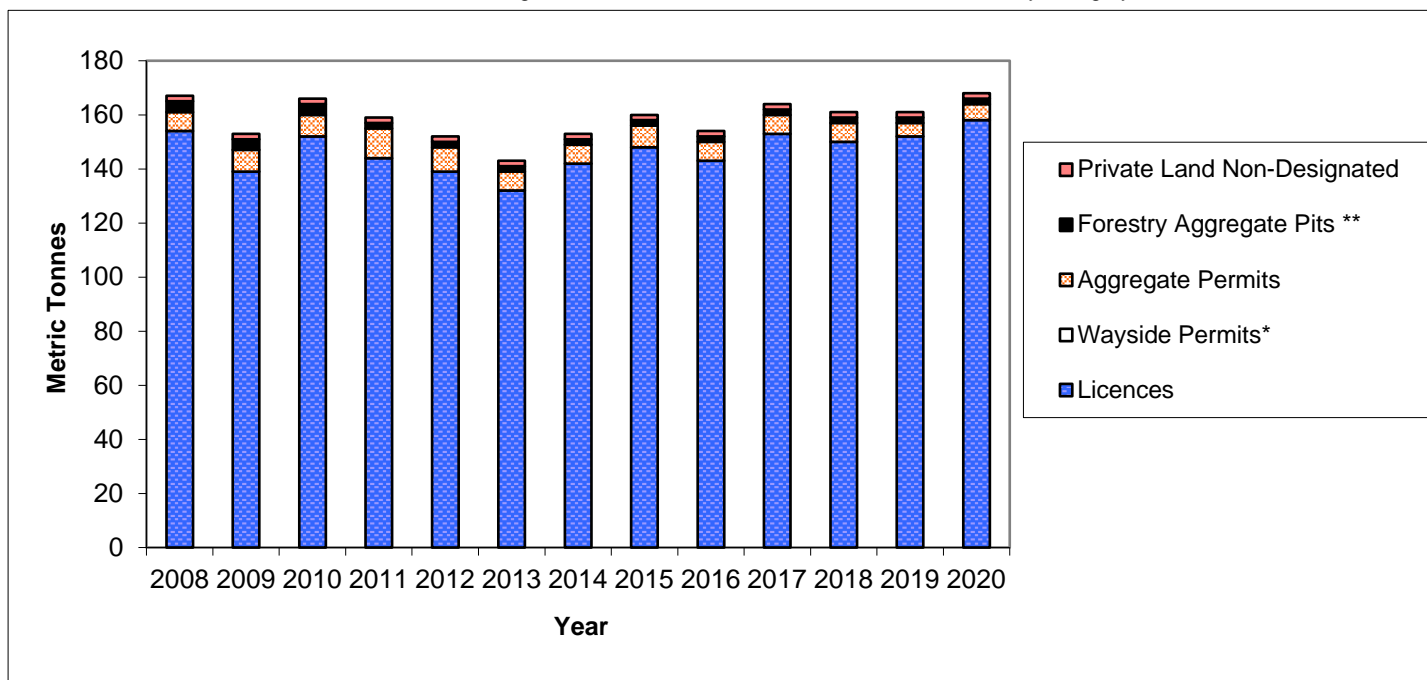
AGGREGATE PRODUCTION IN ONTARIO - 2008 - 2020
(rounded to nearest million tonnes)

	2008	2009	2010	2011	2012	2013	2014	2015	2016	2017	2018	2019	2020
Licences	154	139	152	144	139	132	142	148	143	153	150	152	158
Wayside Permits*	0	0	0	0	0	0	0	0	0	0	0	0	0
Aggregate Permits	7	8	8	11	9	7	7	8	7	7	7	5	6
Forestry Aggregate Pits **	4	4	4	2	2	2	2	2	2	2	2	2	2
Private Land Non-Designated (estimated)	2	2	2	2	2	2	2	2	2	2	2	2	2
ONTARIO TOTAL	167	153	166	159	152	143	153	160	154	164	161	161	168

*Wayside Permit production is reported as the 'total applied for' tonnage of all permits issued, adjusted where actual tonnages for completed contracts are known.

*Actual production for Wayside Permits was .1 million tonnes for 2008, .2 million tonnes for 2009, zero tonnes for 2010 through 2014,

.15 million tonnes for 2015, .35 million tonnes for 2016 through 2018, .20 million tonnes for 2019, 2020. ** Formerly Category 14



Production Statistics Report
Table 2 Lower Tier Grouping Guidelines

The guiding principal is to not disclose the confidential information of a single client's tonnage.

1. There must be a least 3 clients with a minimum of 2 reporting tonnage, each with licenses, in any municipal (lower) tier that appears in the stats report.
2. If the above guideline can't be met then the grouping of lower tiers is required based on the following rules:
 - a. Upper tiers with multiple lower tier groups of 2 or less must be combined for the 3 client minimum lower tier grouping provided there are at least 2 clients reporting tonnage.
 - b. The preferred criteria for determining groups will be based on geographical proximity.
 - c. A single lower tier reporting ZERO tonnage is not reported if it is not required for the above minimum 3 client grouping.
 - d. If geographic proximity can't be resolved then historical (grouping of past stats reports) will determine grouping.

Table 2

**LICENCE AND WAYSIDE PERMIT PRODUCTION
BY LOWER TIER MUNICIPALITY**

Municipality	Licences (Reported in Metric Tonnes)	Wayside Permits	Total
<i>Algoma District</i>			
Algoma District, Unorganized	85,715.00		85,715.00
Blind River, Town of	59,675.72		59,675.72
Bruce Mines, Town of/Plummer Additional Tp	1,243,079.33		1,243,079.33
Elliot Lake, City of/Spanish, Town of/The North Shore Tp	48,806.00		48,806.00
Hilton Tp	27,835.40		27,835.40
Huron Shores, Municipality of	751,312.12		751,312.12
Jocelyn Tp	43,338.00		43,338.00
Johnson Tp/Tarbutt & Tarbutt Add'l Tp	43,010.40		43,010.40
Laird Tp/St. Joseph Tp/Macdonald, Meredith & Aberdeen Add'l	6,618.00		6,618.00
Sault Ste. Marie, City of/Prince Tp	646,674.44		646,674.44
Sub-Total	2,956,064.41	0.00	2,956,064.41
<i>Brant</i>			
Brant, County of/Brantford, City of	2,970,766.17		2,970,766.17
Sub-Total	2,970,766.17	0.00	2,970,766.17
<i>Bruce</i>			
Arran-Elderslie, Municipality of	147,237.85		147,237.85
Brockton, Municipality of	42,166.34		42,166.34
Huron-Kinloss Tp	322,391.84		322,391.84
Kincardine, Municipality of	36,279.78		36,279.78
Northern Bruce Peninsula, Municipality of	153,266.44		153,266.44
Saugeen Shores, Town of	174,439.45		174,439.45
South Bruce Peninsula, Town of	271,874.21		271,874.21
South Bruce, Municipality of	823,779.56		823,779.56
Sub-Total	1,971,435.47	0.00	1,971,435.47
<i>Chatham-Kent</i>			
Chatham-Kent, Municipality of	125,811.13		125,811.13
Sub-Total	125,811.13	0.00	125,811.13
<i>Dufferin</i>			
Amaranth Tp/East Luther Grand Valley Tp	54,950.70		54,950.70
East Garafraxa Tp	874,956.91		874,956.91
Melancthon Tp	720,846.81		720,846.81
Mono Tp	297,744.24		297,744.24
Mulmur Tp	128,290.48		128,290.48
Sub-Total	2,076,789.14	0.00	2,076,789.14
<i>Durham</i>			
Brock Tp	1,499,921.71		1,499,921.71
Clarington, Municipality of	4,408,631.72		4,408,631.72
Oshawa, City of/Scugog Tp	113,718.77		113,718.77
Uxbridge Tp	2,647,640.21		2,647,640.21
Sub-Total	8,669,912.41	0.00	8,669,912.41
<i>Elgin</i>			
Bayham/West Elgin, Municipality of/Malahide Tp	171,695.48		171,695.48
Central Elgin, Municipality of	198,914.86		198,914.86
Sub-Total	370,610.34	0.00	370,610.34

Table 2

**LICENCE AND WAYSIDE PERMIT PRODUCTION
BY LOWER TIER MUNICIPALITY**

Municipality	Licences (Reported in Metric Tonnes)	Wayside Permits	Total
Essex			
Amherstburg, Town of/Leamington, Municipality of/Pelee Tp	2,346,538.00		2,346,538.00
Kingsville, Town of	984,744.00		984,744.00
Sub-Total	3,331,282.00	0.00	3,331,282.00
Frontenac			
Central Frontenac Tp	126,409.37		126,409.37
Frontenac Islands Tp	49,616.06		49,616.06
Kingston, City of	1,503,803.63		1,503,803.63
North Frontenac Tp	257,510.71		257,510.71
South Frontenac Tp	372,496.45		372,496.45
Sub-Total	2,309,836.22	0.00	2,309,836.22
Greater Sudbury			
Greater Sudbury, City of	2,571,835.99		2,571,835.99
Sub-Total	2,571,835.99	0.00	2,571,835.99
Grey			
Chatsworth Tp	343,334.27		343,334.27
Georgian Bluffs Tp	579,081.38		579,081.38
Grey Highlands, Municipality of	1,164,000.78		1,164,000.78
Meaford, Municipality of	557,569.06		557,569.06
Southgate Tp	486,158.26		486,158.26
The Blue Mountains, Town of	221,090.14		221,090.14
West Grey, Municipality of	1,132,880.78		1,132,880.78
Sub-Total	4,484,114.67	0.00	4,484,114.67
Haldimand			
Haldimand, County of	1,563,226.00		1,563,226.00
Sub-Total	1,563,226.00	0.00	1,563,226.00
Haliburton			
Algonquin Highlands Tp	109,509.69		109,509.69
Dysart et al Tp	277,320.78		277,320.78
Highlands East Tp	22,129.25		22,129.25
Minden Hills Tp	104,417.96		104,417.96
Sub-Total	513,377.68	0.00	513,377.68
Halton			
Burlington, City of/Halton Hills, Town of	5,280,254.50		5,280,254.50
Milton, Town of	971,331.00		971,331.00
Sub-Total	6,251,585.50	0.00	6,251,585.50
Hamilton			
Hamilton, City of	6,775,245.00		6,775,245.00
Sub-Total	6,775,245.00	0.00	6,775,245.00

Table 2

**LICENCE AND WAYSIDE PERMIT PRODUCTION
BY LOWER TIER MUNICIPALITY**

Municipality	Licences (Reported in Metric Tonnes)	Wayside Permits	Total
<i>Hastings</i>			
Bancroft, Town of/Limerick Tp	65,695.87		65,695.87
Belleville, City of	680,769.73		680,769.73
Carlo/Mayo Tp	5,738.42		5,738.42
Centre Hastings, Municipality of	229,424.22		229,424.22
Faraday Tp	17,061.08		17,061.08
Hasting Highlands, Municipality of	199,750.80		199,750.80
Madoc Tp	582,509.59		582,509.59
Marmora & Lake, Municipality of/Stirling-Rawdon Tp	16,101.12		16,101.12
Quinte West, City of	361,313.16		361,313.16
Tweed, Municipality of	57,247.31		57,247.31
Tyendinaga Tp	242,847.50		242,847.50
Wollaston Tp	18,248.64		18,248.64
Sub-Total	2,476,707.44	0.00	2,476,707.44
<i>Huron</i>			
Ashfield-Colborne-Wawanosh Tp	1,354,932.47		1,354,932.47
Bluewater, Municipality of	3,855.00		3,855.00
Central Huron, Municipality of	324,209.77	200,000.00	524,209.77
Howick Tp	763,061.04		763,061.04
Huron East, Municipality of	744,177.13		744,177.13
Morris-Turnberry, Municipality of	202,497.99		202,497.99
North Huron Tp	96,032.77		96,032.77
South Huron, Municipality of	99,978.76		99,978.76
Sub-Total	3,588,744.93	200,000.00	3,788,744.93
<i>Kawartha Lakes</i>			
Kawartha Lakes, City of	6,432,633.03		6,432,633.03
Sub-Total	6,432,633.03	0.00	6,432,633.03
<i>Lambton</i>			
Lambton Shores, Municipality of	354,360.16		354,360.16
Warwick Tp/Plympton-Wyoming, Town of	216,929.13		216,929.13
Sub-Total	571,289.29	0.00	571,289.29
<i>Lanark</i>			
Beckwith Tp/Drummond-North Elmsley Tp	292,154.29		292,154.29
Lanark Highlands Tp/Tay Valley Tp	1,273,906.61		1,273,906.61
Mississippi Mills, Town of	263,782.14		263,782.14
Montague Tp	194,854.15		194,854.15
Sub-Total	2,024,697.19	0.00	2,024,697.19

Table 2

**LICENCE AND WAYSIDE PERMIT PRODUCTION
BY LOWER TIER MUNICIPALITY**

Municipality	Licences (Reported in Metric Tonnes)	Wayside Permits	Total
Leeds & Grenville			
Athens Tp/Front of Yonge Tp/Leeds and Thousand Islands Tp	641,665.43		641,665.43
Augusta Tp	48,712.52		48,712.52
Edwardsburgh-Cardinal Tp	198,097.54		198,097.54
Elizabethtown-Kitley Tp/Merrickville-Wolford, Village of	246,797.92		246,797.92
North Grenville Tp	796,523.21		796,523.21
Rideau Lakes Tp	109,743.79		109,743.79
Sub-Total	2,041,540.41	0.00	2,041,540.41
Lennox & Addington			
Addington Highlands Tp	21,757.12		21,757.12
Greater Napanee, Town of	222,906.85		222,906.85
Loyalist Tp	1,618,045.95		1,618,045.95
Stone Mills Tp	109,778.40		109,778.40
Sub-Total	1,972,488.32	0.00	1,972,488.32
Manitoulin District			
Assignack Tp/Billings Tp	941.31		941.31
Central Manitoulin Tp	45,004.84		45,004.84
Gordon/Barrie Island/Burpee & Mills Tp/Cockburn Island Tp	35,293.24		35,293.24
Northeastern Manitoulin & The Islands	137,958.99		137,958.99
Tehkummah Tp	82,733.44		82,733.44
Unorganized - Manitoulin D	3,779,729.89		3,779,729.89
Sub-Total	4,081,661.71	0.00	4,081,661.71
Middlesex			
Adelaide Metcalfe Tp/Strathroy-Caradoc Tp	128,419.17		128,419.17
London, City of	727,064.22		727,064.22
Lucan Biddulph Tp/North Middlesex, Municipality of	35,527.44		35,527.44
Middlesex Centre Tp	207,815.07		207,815.07
Thames Centre, Municipality of	2,873,988.61		2,873,988.61
Sub-Total	3,972,814.51	0.00	3,972,814.51
Muskoka			
Bracebridge	946,438.99		946,438.99
Georgian Bay Tp	11,863.00		11,863.00
Gravenhurst	218,598.98		218,598.98
Huntsville	1,146,804.47		1,146,804.47
Lake of Bays Tp	242,407.30		242,407.30
Muskoka Lakes Tp	322,929.83		322,929.83
Sub-Total	2,889,042.57	0.00	2,889,042.57
Niagara			
Fort Erie, Town of/Pelham, Town of/Port Colborne, City of/ Wainfleet Tp	2,741,229.22		2,741,229.22
Lincoln, Town of/Niagara-on-the-Lake, Town of	1,807,458.04		1,807,458.04
Niagara Falls, City of	551,513.92		551,513.92
Sub-Total	5,100,201.18	0.00	5,100,201.18

Table 2

**LICENCE AND WAYSIDE PERMIT PRODUCTION
BY LOWER TIER MUNICIPALITY**

Municipality	Licences (Reported in Metric Tonnes)	Wayside Permits	Total
<i>Nipissing District</i>			
Bonfield Tp	41,924.12		41,924.12
Calvin Tp/East Ferris, Municipality of	36,752.03		36,752.03
Chisholm Tp	30,487.72		30,487.72
Mattawan Tp/South Algonquin Tp/Unorganized - Nippissing D	13,501.70		13,501.70
North Bay, City of	463,644.48		463,644.48
Papineau-Cameron Tp	17,772.00		17,772.00
West Nipissing, Municipality of	325,323.48		325,323.48
Unorganized - Manitoulin D	2,999.00		2,999.00
Sub-Total	932,404.53	0.00	932,404.53
<i>Norfolk</i>			
Norfolk, County of	929,098.85		929,098.85
Sub-Total	929,098.85	0.00	929,098.85
<i>Northumberland</i>			
Alnwick-Haldimand Tp	554,423.86		554,423.86
Brighton, Municipality of	498,063.69		498,063.69
Cramahe Tp	1,649,135.16		1,649,135.16
Hamilton Tp	106,931.00		106,931.00
Port Hope, Municipality of	64,628.00		64,628.00
Trent Hills, Municipality of	192,043.20		192,043.20
Sub-Total	3,065,224.91	0.00	3,065,224.91
<i>Ottawa</i>			
Ottawa, City of	12,722,755.47		12,722,755.47
Sub-Total	12,722,755.47	0.00	12,722,755.47
<i>Oxford</i>			
Blandford-Blenheim Tp	571,282.13		571,282.13
East Zorra-Tavistock Tp/Norwich Tp	118,110.00		118,110.00
South-West Oxford Tp	1,252,275.66		1,252,275.66
Zorra Tp	4,636,468.64		4,636,468.64
Sub-Total	6,578,136.43	0.00	6,578,136.43
<i>Parry Sound District</i>			
Armour Tp/Burks Falls, Village of	54,351.24		54,351.24
Callander, Municipality of	33,381.00		33,381.00
Carling Tp/The Archipelago Tp/McKeller Tp	19,498.44		19,498.44
Joly Tp	131,960.37		131,960.37
Kearney, Town of	31,171.95		31,171.95
Macher Tp	13,830.56		13,830.56
Magnetawan, Municipality of	57,021.48		57,021.48
McDougall Tp/Parry Sound, Town of	172,794.29		172,794.29
McMurrich-Monteith Tp	61,484.80		61,484.80
Nipissing Tp	23,037.16		23,037.16
Perry Tp	15,155.00		15,155.00
Powassan, Municipality of	29,682.18		29,682.18
Ryerson Tp	147,517.32		147,517.32
Seguin Tp	72,239.84		72,239.84
Strong Tp	440,784.89		440,784.89
Unorganized - Parry Sound	8,911.19		8,911.19
Whitestone The Municipality of	32,389.80		32,389.80
Sub-Total	1,345,211.51	0.00	1,345,211.51

Table 2

**LICENCE AND WAYSIDE PERMIT PRODUCTION
BY LOWER TIER MUNICIPALITY**

Municipality	Licences (Reported in Metric Tonnes)	Wayside Permits	Total
<i>Peel</i>			
Caledon, Town of	3,089,084.58		3,089,084.58
Sub-Total	3,089,084.58	0.00	3,089,084.58
<i>Perth</i>			
Perth East Tp	349,260.51		349,260.51
Perth South Tp/St. Marys, Separated Town of	1,945,924.08		1,945,924.08
West Perth Tp	318,653.96		318,653.96
Sub-Total	2,613,838.55	0.00	2,613,838.55
<i>Peterborough</i>			
Asphodel-Norwood Tp	283,859.00		283,859.00
Cavan-Millbrook-North Monaghan Tp/Otonabee-South Monaghan Tp	544,606.96		544,606.96
Douro-Dummer Tp	494,365.05		494,365.05
Havelock-Belmont-Methuen Tp	1,601,171.11		1,601,171.11
North Kawartha Tp	22,802.56		22,802.56
Selwyn Tp	336,116.03		336,116.03
Trent Lakes, Municipality of	831,384.87		831,384.87
Sub-Total	4,114,305.58	0.00	4,114,305.58
<i>Prescott & Russell</i>			
Alfred & Plantagenet Tp	243,281.64		243,281.64
Champlain Tp	314,646.11		314,646.11
Clarence-Rockland, City of	99,497.12		99,497.12
East Hawkesbury Tp	12,869.00		12,869.00
Russell Tp	35,233.00		35,233.00
The Nation, Municipality of	299,088.42		299,088.42
Sub-Total	1,004,615.29	0.00	1,004,615.29
<i>Prince Edward Co</i>			
Prince Edward, County of	1,566,686.88		1,566,686.88
Sub-Total	1,566,686.88	0.00	1,566,686.88
<i>Renfrew</i>			
Admaston-Bromley Tp/Renfrew, Town of	311,114.74		311,114.74
Bonnechere Valley Tp	94,854.35		94,854.35
Brudenell, Lyndoc and Raglan Tp	37,902.00		37,902.00
Deep River Tp/Head, Clara & Maria Tp	39,809.12		39,809.12
Greater Madawaska Tp	19,232.00		19,232.00
Horton Tp	274,303.47		274,303.47
Killaloe, Hagarty and Richards Tp	86,212.20		86,212.20
Laurentian Hills	74,871.61		74,871.61
Laurentian Valley Tp	472,662.14		472,662.14
Madawaska Valley	166,514.85		166,514.85
McNab-Braeside Tp	483,639.00		483,639.00
North Algona-Wilberforce Tp	31,300.80		31,300.80
Petawawa, Town of	189,589.98		189,589.98
Whitewater Region Tp	179,285.50		179,285.50
Sub-Total	2,461,291.76	0.00	2,461,291.76

Table 2

**LICENCE AND WAYSIDE PERMIT PRODUCTION
BY LOWER TIER MUNICIPALITY**

Municipality	Licences (Reported in Metric Tonnes)	Wayside Permits	Total
<i>Simcoe</i>			
Adjala-Tosorontio Tp/New Tecumseth, Town of	334,043.62		334,043.62
Clearview Tp	1,140,530.84		1,140,530.84
Collingwood, Town of/Essa Tp/Innisfil, Town of	102,543.86		102,543.86
Midland, Town of/Penetanguishine, Town of/	146,081.00		146,081.00
Oro-Medonte Tp	2,024,615.75		2,024,615.75
Ramara Tp	3,017,980.82		3,017,980.82
Severn Tp	4,566,643.16		4,566,643.16
Springwater Tp	1,327,782.46		1,327,782.46
Tay Tp	220,663.51		220,663.51
Tiny Tp	491,288.75		491,288.75
Sub-Total	13,372,173.77	0.00	13,372,173.77
<i>Stormont, Dundas & Glengarry</i>			
North Dundas Tp	649,411.03		649,411.03
North Glengarry Tp/South Glengarry Tp	299,296.42		299,296.42
North Stormont Tp	1,547,845.45		1,547,845.45
South Dundas Tp	47,982.50		47,982.50
South Stormont Tp	809,547.03		809,547.03
Sub-Total	3,354,082.43	0.00	3,354,082.43
<i>Sudbury District</i>			
Baldwin Tp	53,439.11		53,439.11
French River, Municipality of	124,542.16		124,542.16
Markstay-Warren, Municipality of	49,687.52		49,687.52
Sables Spanish Rivers Tp/Nairn & Hyman Tp	48,177.76		48,177.76
Sudbury District, Unorganized	260,329.02		260,329.02
Sub-Total	536,175.57	0.00	536,175.57
<i>Thunder Bay District</i>			
Conmee Tp	171,693.79		171,693.79
Neebing, Municipality of	13,136.68		13,136.68
Oliver Paipoonge, Municipality of	272,726.02		272,726.02
Shuniah Tp	328,983.87		328,983.87
Thunder Bay District, Unorganized	566,901.34		566,901.34
Sub-Total	1,353,441.70	0.00	1,353,441.70
<i>Waterloo</i>			
Cambridge, City of/Kitchener, City of	0.00		0.00
North Dumfries Tp	5,677,296.48		5,677,296.48
Wellesley Tp	1,194,988.77		1,194,988.77
Wilmot Tp	1,365,331.87		1,365,331.87
Woolwich Tp	202,152.21		202,152.21
Sub-Total	8,439,769.33	0.00	8,439,769.33

Table 2

**LICENCE AND WAYSIDE PERMIT PRODUCTION
BY LOWER TIER MUNICIPALITY**

Municipality	Licences	Wayside Permits	Total
Wellington			
Centre Wellington Tp	957,502.86		957,502.86
Erin, Town of	989,718.95		989,718.95
Guelph-Eramosa Tp	451,905.25		451,905.25
Mapleton Tp	169,614.59		169,614.59
Minto, Town of	367,583.84		367,583.84
Puslinch Tp	4,627,209.92		4,627,209.92
Wellington North Tp	130,143.92		130,143.92
Sub-Total	7,693,679.33	0.00	7,693,679.33
York			
East Gwillimbury, Town of/Georgina, Town of	73,633.84		73,633.84
Whitchurch-Stouffville, Town of	569,802.83		569,802.83
Sub-Total	643,436.67	0.00	643,436.67
GRAND TOTAL	157,909,125.85	200,000.00	158,109,125.85

Table 3

**LICENCE AND WAYSIDE PRODUCTION
BY UPPER TIER MUNICIPALITY
(Million Tonnes)**

Municipality	2011	2012	2013	2014	2015	2016	2017	2018	2019	2020
Algoma, District of	2.9	2.6	2.4	2.7	2.9	2.8	3.1	3.0	3.1	3.0
Brant Co.	1.7	1.7	1.7	1.6	1.9	1.7	2.2	2.6	2.6	3.0
Bruce Co.	1.7	1.5	1.4	1.8	2.0	1.5	1.7	1.8	1.6	2.0
Chatham-Kent, R. M. of	0.4	0.2	0.3	0.2	0.2	0.3	0.3	0.2	0.3	0.1
Dufferin Co.	2.3	2.2	2.3	2.7	2.3	2.2	2.2	1.8	2.1	2.1
Durham, R. M. of	10.2	9.9	10.1	10.3	10.0	9.5	9.3	9.4	8.6	8.7
Elgin Co.	0.5	0.4	0.4	0.4	0.3	0.4	0.5	0.5	0.4	0.4
Essex Co.	2.0	2.0	2.1	1.6	1.9	1.9	2.3	2.6	3.1	3.3
Frontenac Co.	2.2	2.0	2.0	2.0	1.8	1.6	2.3	2.0	2.0	2.3
Greater Sudbury, City of	3.1	2.7	2.6	2.8	3.1	2.6	2.5	2.1	2.6	2.6
Grey Co.	3.0	2.6	2.8	3.2	4.1	3.8	4.3	4.3	4.3	4.5
Haldimand Co.	1.2	1.3	1.2	1.5	0.8	1.1	1.0	1.1	1.2	1.6
Haliburton Co.	0.5	0.4	0.4	0.5	0.4	0.4	0.6	0.5	0.5	0.5
Halton, R. M. of	8.7	7.4	6.8	7.7	7.2	6.6	5.6	5.4	5.6	6.3
Hamilton, City of	5.0	5.0	4.9	5.2	5.9	5.9	5.6	6.0	6.9	6.8
Hastings Co.	3.1	2.7	2.5	3.1	2.9	2.8	3.1	2.8	2.7	2.5
Huron Co.	2.8	2.5	2.7	3.7	3.1	3.0	3.2	3.8	3.9	3.8
Kawartha Lakes, City of	4.7	5.1	4.3	5.5	7.0	6.5	6.8	7.2	7.0	6.4
Lambton Co.	0.5	0.4	0.4	0.7	0.6	0.5	0.5	0.6	0.6	0.6
Lanark Co.	1.8	1.5	1.8	1.7	1.9	1.8	2.1	2.2	1.9	2.0
Leeds & Grenville Co.'s	2.0	2.2	1.9	2.2	1.9	2.0	2.2	2.1	2.1	2.0
Lennox & Addington Co.	2.2	2.2	1.8	2.0	2.4	2.0	2.2	2.4	1.9	2.0
Manitoulin, District of	3.2	2.6	2.2	2.8	2.9	3.0	3.0	3.5	3.3	4.1
Middlesex Co.	3.9	3.8	3.6	3.6	3.7	4.0	4.6	4.7	3.9	4.0
Muskoka	2.1	2.0	2.1	2.0	2.3	2.2	2.7	2.4	2.6	2.9
Niagara, R. M. of	3.9	4.7	4.6	4.3	5.0	4.9	4.9	5.2	5.1	5.1
Nipissing, District of	1.1	1.2	1.1	1.2	1.2	1.0	0.9	0.9	1.0	0.9
Norfolk Co.	0.5	0.8	1.0	0.8	0.6	0.7	0.6	0.8	0.9	0.9
Northumberland Co.	2.7	3.1	2.6	2.6	3.1	3.4	3.2	3.1	3.4	3.1
Ottawa, City of	10.9	10.6	9.5	10.0	9.7	8.7	9.7	10.3	11.1	12.7
Oxford Co.	5.1	5.5	5.9	6.3	5.9	6.4	7.4	6.8	7.1	6.6
Parry Sound, District of	2.1	1.5	1.2	1.4	1.3	1.5	1.3	1.4	1.2	1.3
Peel, R. M. of	3.6	3.9	3.6	4.0	3.5	2.5	3.0	2.7	3.0	3.1
Perth Co.	2.3	2.3	2.2	2.5	2.6	2.6	2.6	2.5	2.5	2.6
Peterborough Co.	3.2	2.7	2.6	2.7	3.1	3.1	3.8	3.3	3.8	4.1
Prescott & Russell Co.'s	1.6	1.5	1.4	1.5	1.5	1.4	1.5	1.4	1.2	1.0
Prince Edward Co.	1.6	1.6	1.3	1.5	1.3	1.6	1.4	1.4	1.4	1.6
Renfrew Co.	2.2	2.3	1.9	1.9	2.1	1.9	2.3	2.1	2.0	2.5
Simcoe Co.	10.8	10.7	10.1	11.6	13.4	11.4	13.0	11.9	12.2	13.4
Stormont, Dundas & Glengarry Co.'s	4.0	3.6	3.2	2.8	2.5	2.8	3.0	3.1	3.7	3.4
Sudbury, District of	0.9	1.0	0.8	0.9	0.9	0.6	0.6	0.8	0.6	0.5
Thunder Bay, District of	1.1	1.1	0.8	0.9	0.6	1.5	1.4	1.5	1.1	1.4
Waterloo, R. M. of	7.8	7.3	7.0	7.4	8.7	9.0	8.9	7.9	8.1	8.4
Wellington Co.	7.0	7.4	6.6	6.5	7.1	7.1	8.4	7.7	7.4	7.7
York, R. M. of	0.6	0.9	0.7	0.6	1.1	1.3	0.7	0.5	0.6	0.6
TOTAL	144.8	140.6	132.9	142.9	148.8	143.6	152.6	150.1	151.9	158.1

Note: Totals may not equal due to rounding.

Table 4

**LICENCE PRODUCTION IN 2020
THE TOP TEN PRODUCING MUNICIPALITIES
(Rounded to nearest million tonnes)**

Municipality(1)	County/Region	2020 Production	Production(2)				
			2019	2018	2017	2016	2015
1 City of Ottawa	City of Ottawa	12.7	11.1	10.3	9.7	8.7	9.7
2 City of Hamilton	City of Hamilton	6.8	6.9	6.0	5.6	5.9	5.9
3 City of Kawartha Lakes	City of Kawartha Lakes	6.4	7.0	7.2	6.8	6.5	7.0
4 Township of North Dumfries	Waterloo	5.7	5.1	5.2	5.6	5.5	5.4
5 City of Burlington/ Town Of Halton Hills (3)	Halton	5.3	5.1	5.2	4.7	5.3	2.4
6 Township of Zorra	Oxford	4.6	5.0	4.7	5.1	4.7	4.1
7 Township of Puslinch	Wellington	4.6	4.2	4.2	4.6	3.5	3.9
8 Severn Township	Simcoe	4.6	3.7	3.6	4.0	3.5	4.0
9 Municipality of Clarington	Durham	4.4	4.2	4.4	4.9	5.5	5.8
10 Town of Caledon	Peel	3.1	2.8	2.6	3.0	2.5	3.5
Total		58.2	55.1	53.4	54.0	51.6	51.7

Notes:

1. Municipalities are ranked in order of their licenced production for 2020.
2. Historical data are for current year's Top Ten Producing Municipalities.
3. City of Burlington/Town Of Halton Hills combined due to lower tier grouping guidelines.

Table 5

**NUMBER AND TYPE OF AGGREGATE LICENCES
(Reported by NDMNRF District)**

District	No. of Licences	Category		Type of Operation			
		Class A	Class B	Pit	Quarry	Pit & Quarry	Underwater
Aurora (GTA)	128	113	15	110	18	0	0
Aylmer	275	216	59	261	8	6	0
Bancroft	264	103	161	187	37	40	0
Guelph (Cambridge)	447	395	52	405	39	3	0
Kemptville	454	295	159	301	128	25	0
Midhurst	481	378	103	413	63	5	0
North Bay	141	62	79	105	8	28	0
Parry Sound	284	117	167	180	11	93	0
Pembroke	207	75	132	184	12	11	0
Peterborough (Tweed)	502	284	218	403	82	17	0
Sault Ste. Marie	97	56	41	78	7	12	0
Sudbury	222	130	92	153	22	47	0
Thunder Bay	95	53	42	70	8	17	0
Wawa	2	2	0	1	0	1	0
TOTAL	3,599	2,279	1,320	2,851	443	305	0

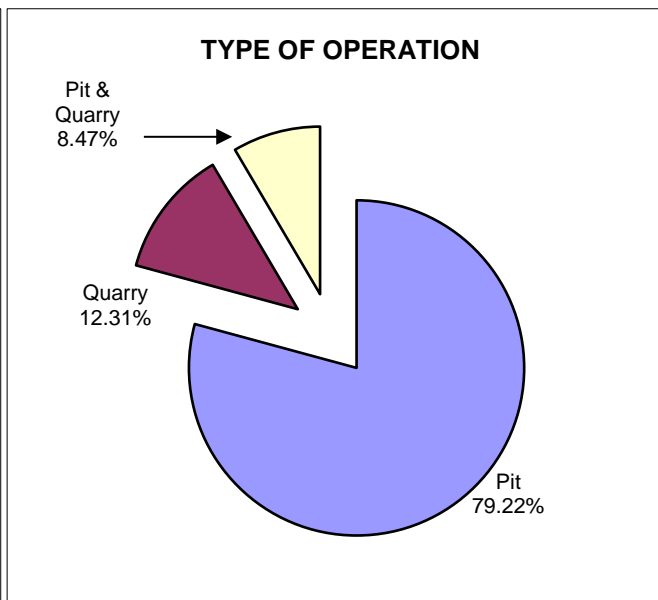
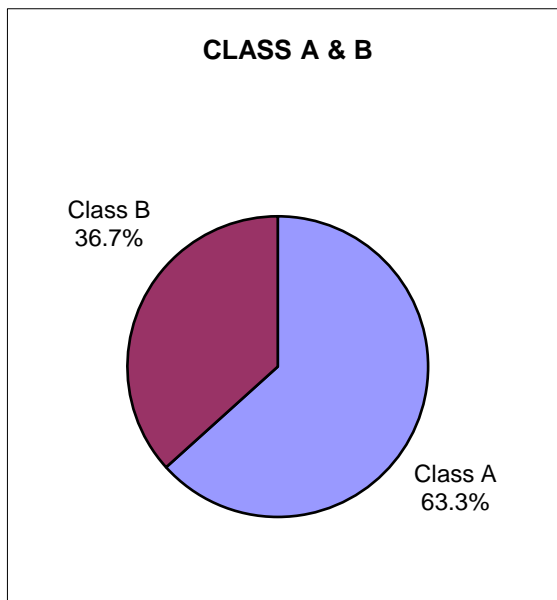


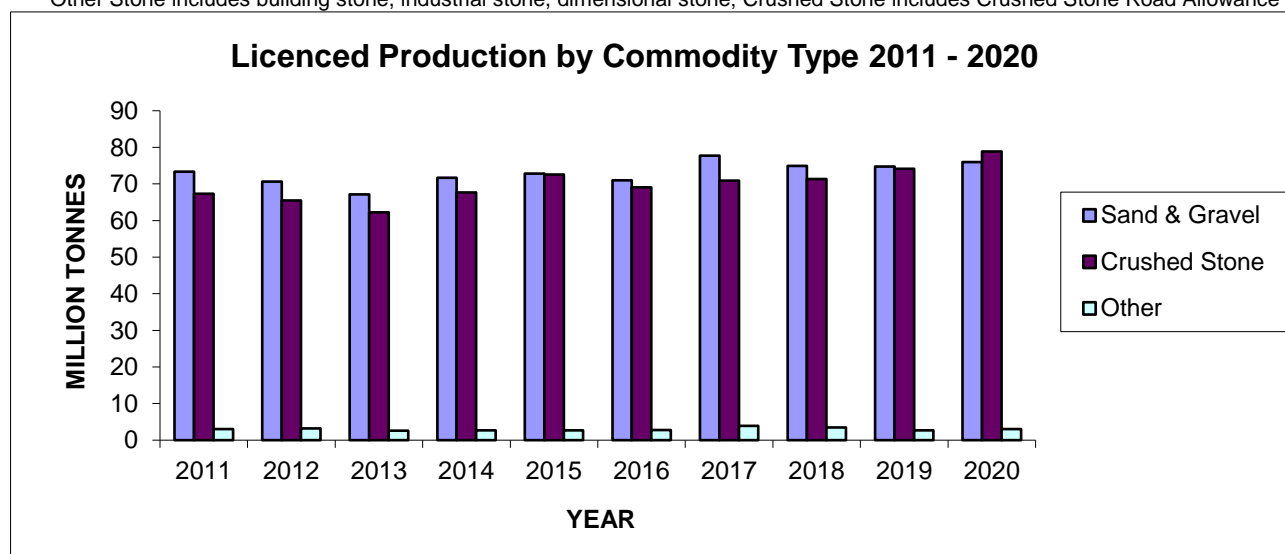
Table 6

**2020 LICENCED AGGREGATE PRODUCTION
BY COMMODITY TYPE
(Reported by NDMNRF District)**

District	Total	Sand & Gravel	Crushed Stone	Clay/ Shale	Other Stone
Aurora (GTA)	18,652,519.16	8,970,241.01	9,121,682.00	489,995.66	70,600.49
Aylmer	15,879,042.55	11,228,502.49	4,553,060.20	44,794.86	52,685.00
Bancroft	4,746,047.61	822,694.98	3,625,638.19	0.00	297,714.44
Guelph (Cambridge)	38,867,758.94	24,386,160.91	14,333,359.62	144,569.00	3,669.41
Kemptville	21,123,355.19	3,234,101.61	16,599,410.01	177.47	1,289,666.10
Midhurst	21,782,224.60	10,928,821.64	10,559,343.97	47,486.95	246,572.04
North Bay	1,228,894.12	721,428.87	479,870.25	87.00	27,508.00
Parry Sound	3,951,139.45	1,380,642.12	2,539,400.86	0.00	31,096.47
Pembroke	2,485,627.36	1,623,602.65	856,239.11	1,768.00	4,017.60
Peterborough	17,702,997.49	7,684,161.19	9,938,435.22	21,157.36	59,243.72
Sault Ste. Marie	2,946,936.41	1,506,738.94	1,430,720.99	9,476.48	0.00
Sudbury	7,189,141.27	2,290,512.90	4,698,784.97	4,651.82	195,191.58
Thunder Bay	1,353,441.70	1,192,679.63	160,729.17	0.00	32.90
TOTAL	157,909,125.85	75,970,288.94	78,896,674.56	764,164.60	2,277,997.75

Note: Totals may not equal due to rounding - Reported in metric tonnes

Other Stone includes building stone, industrial stone, dimensional stone; Crushed Stone includes Crushed Stone Road Allowance



**Yearly Production for Aggregate Licences
(in Million Tonnes)**

	Total	Sand & Gravel	Crushed Stone	Other
2011	143.73	73.36	67.34	3.03
2012	139.30	70.60	65.50	3.20
2013	131.97	67.13	62.23	2.61
2014	142.02	71.68	67.67	2.67
2015	148.06	72.83	72.55	2.68
2016	142.86	71.01	69.10	2.75
2017	152.60	77.76	70.90	3.94
2018	149.74	74.92	71.37	3.45
2019	151.52	74.73	74.12	2.67
2020	157.91	75.97	78.90	3.04

Table 7

**2020 AGGREGATE PERMIT PRODUCTION
BY COMMODITY TYPE
(Reported by NDMNRF District)**

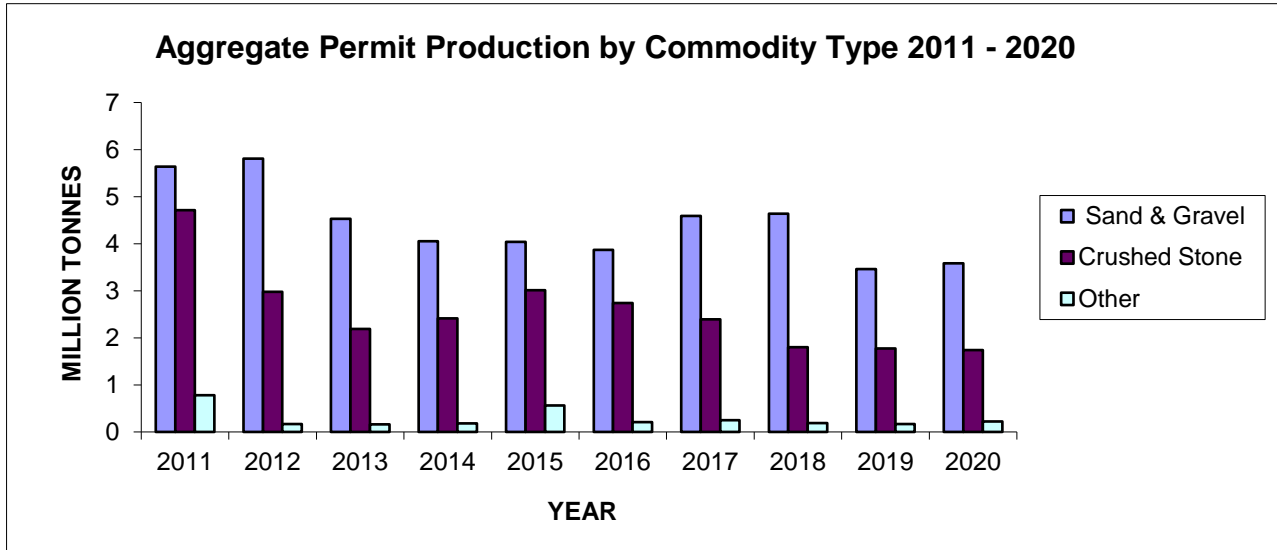
Region/District	Total Production	Sand & Gravel	Crushed Stone	Clay/Shale	Other Stone
NORTHEAST					
Chapleau	57,511.20	57,511.20	-	-	-
Cochrane	169,427.44	155,879.44	13,548.00	-	-
Hearst	306,748.90	148,001.61	158,747.29	-	-
Kirkland Lake	337,206.50	302,790.00	34,416.50	-	-
North Bay	416,201.55	313,152.65	89,210.90	-	13,838.00
Sault Ste. Marie	113,249.08	111,348.68	1,900.40	-	-
Sudbury	286,146.72	64,782.43	220,821.54	-	542.75
Timmins	255,347.65	246,392.65	1,563.00	7,392.00	-
Wawa	402,275.29	320,205.89	82,069.40	-	-
Sub-Total	2,344,114.33	1,720,064.55	602,277.03	7,392.00	14,380.75
NORTHWEST					
Dryden	391,211.34	160,812.34	224,879.00	-	5,520.00
Fort Frances	278,570.08	253,203.00	22,118.08	-	3,249.00
Kenora	181,335.32	97,352.50	71,727.41	-	12,255.41
Nipigon	467,865.32	324,399.32	143,296.00	-	170.00
Red Lake	252,540.88	139,437.62	113,103.26	-	-
Sioux Lookout	378,974.46	378,974.46	-	-	-
Thunder Bay	413,366.86	386,591.86	26,741.00	-	34.00
Sub-Total	2,363,864.26	1,740,771.10	601,864.75	-	21,228.41
SOUTHCENTRAL					
Algonquin Park	-	-	-	-	-
Aurora (GTA)	-	-	-	-	-
Aylmer	10,934.40	10,934.40	-	-	-
Bancroft	573,171.14	29,573.10	371,308.02	2,376.00	169,914.02
Guelph (Cambridge)	-	-	-	-	-
Kemptville	1,772.76	1,772.76	-	-	-
Midhurst	-	-	-	-	-
Parry Sound	106,451.02	39,839.94	66,611.08	-	-
Pembroke	38,028.92	37,278.92	750.00	-	-
Peterborough (Tweed)	101,515.37	-	101,515.37	-	-
Sub-Total	831,873.61	119,399.12	540,184.47	2,376.00	169,914.02
TOTAL	5,539,852.20	3,580,234.77	1,744,326.25	9,768.00	205,523.18

Note: Totals may not equal due to rounding - Reported in metric tonnes

Other Stone includes building stone, industrial stone, dimensional stone

Table 8

**2020 AGGREGATE PERMIT PRODUCTION
BY COMMODITY TYPE
(Reported By Year)**



**Yearly Production for Aggregate Permits
(in Million Tonnes)**

	Total	Sand & Gravel	Crushed Stone	Other
2011	11.13	5.64	4.71	0.78
2012	8.96	5.81	2.98	0.17
2013	6.88	4.53	2.19	0.16
2014	6.64	4.05	2.41	0.18
2015	7.61	4.04	3.01	0.56
2016	6.82	3.87	2.74	0.21
2017	7.23	4.59	2.39	0.25
2018	6.63	4.64	1.80	0.19
2019	5.40	3.46	1.77	0.17
2020	5.54	3.58	1.74	0.22

Table 9

**2020 AGGREGATE PERMIT PRODUCTION
BY COMMODITY TYPE
(Reported by CAC* Geographic Areas)**

Area	Total	Sand & Gravel	Crushed Stone	Clay/ Shale	Other Stone
Southwest (1)	10,934	10,934	0	0	0
Peninsula (2)	0	0	0	0	0
West Central (3)	0	0	0	0	0
GTA (4)	0	0	0	0	0
East Central (5)	687,624	42,510	472,823	2,376	169,914
East (6)	40,062	39,312	750	0	0
Northeast (7)	1,916,023	1,307,176	587,074	7,392	14,381
Northwest (8)	2,885,210	2,180,303	683,679	0	21,228
TOTAL	5,539,852	3,580,235	1,744,326	9,768	205,523

Note: Totals may not equal due to rounding - Reported in metric tonnes

Other Stone includes building stone, industrial stone, dimensional stone; Crushed Stone includes Crushed Stone Road Allowance

*CAC - Cement Association of Canada formerly CPCA - Canadian Portland Cement Association

**2020 AGGREGATE LICENCE PRODUCTION
BY COMMODITY TYPE
(Reported by CAC* Geographic Areas)**

Area	Total	Sand & Gravel	Crushed Stone	Clay/ Shale	Other Stone
Southwest (1)	21,152,527	15,697,582	5,278,514	120,197	56,234
Peninsula (2)	17,338,537	3,961,764	13,307,487	69,167	120
West Central (3)	38,037,962	26,884,140	10,859,763	47,487	246,572
GTA (4)	18,654,019	8,971,741	9,121,682	489,996	70,600
East Central (5)	21,057,978	8,717,543	11,946,722	18,456	375,256
East (6)	27,891,307	5,609,461	20,971,989	4,646	1,305,210
Northeast (7)	9,467,289	3,426,726	5,811,853	4,739	223,971
Northwest (8)	4,309,506	2,701,333	1,598,664	9,476	33
TOTAL	157,909,126	75,970,289	78,896,675	764,165	2,277,998

Note: Totals may not equal due to rounding - Reported in metric tonnes

Other Stone includes building stone, industrial stone, dimensional stone; Crushed Stone includes Crushed Stone Road Allowance

*CAC - Cement Association of Canada formerly CPCA - Canadian Portland Cement Association

Table 10

**REHABILITATION OF
LICENCED AGGREGATE SITES IN 2020
(Reported by NDMNRF District)**

District	Total No. of Licences	Total Licenced Area	Original Disturbed Area	New Disturbed Area	New Rehab. Area	Total Disturbed Area
Aurora (GTA)	128	7,617.11	2,577.68	77.60	83.62	2,571.66
Aylmer	275	8,236.48	2,811.26	132.21	90.93	2,852.54
Bancroft	264	9,419.15	1,402.02	59.44	19.87	1,441.59
Guelph (Cambridge)	447	16,620.75	5,369.60	215.51	188.97	5,396.14
Kemptville	454	14,234.56	4,791.94	65.67	148.75	4,708.87
Midhurst	481	16,101.37	4,455.34	209.60	69.16	4,595.78
North Bay	141	6,301.73	835.39	38.15	2.52	871.02
Parry Sound	284	9,092.99	2,168.47	83.26	8.83	2,242.89
Pembroke	207	5,381.18	1,019.25	37.10	6.30	1,050.05
Peterborough (Tweed)	502	14,891.51	4,125.73	99.31	75.94	4,149.10
Sault Ste. Marie	97	3,789.66	781.95	8.45	3.18	787.22
Sudbury	222	15,960.90	1,734.12	46.40	28.89	1,751.62
Thunder Bay	95	6,985.42	574.12	32.29	4.72	601.68
Wawa	2	46.87	0.25	0.00	0.00	0.25
TOTAL	3,599	134,679.68	32,647.10	1,104.98	731.67	33,020.41

Note: Areas reported in hectares

These statistics are compiled from information supplied by licencees and are not independently checked for accuracy.

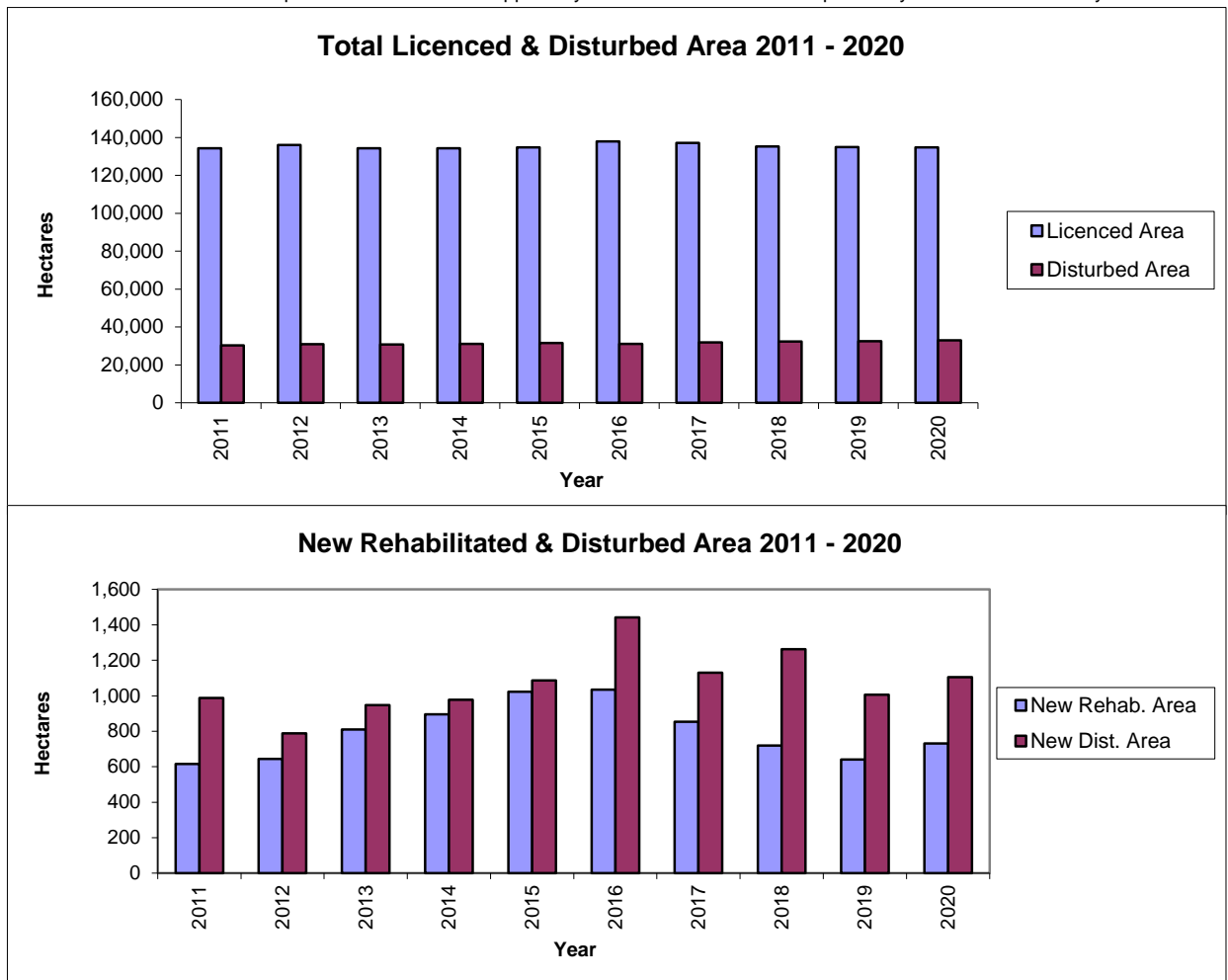


Table 11

**NUMBER AND TYPE OF AGGREGATE PERMITS
(Reported by NDMNRF District)**

Region/District	Total Hectarage	Total No. of Permits	Pit	Quarry	Pit & Quarry	Underwater
NORTHEAST						
Chapleau	1,175.54	69	66	3	0	0
Cochrane	3,397.34	108	91	10	7	0
Hearst	3,418.56	171	146	23	2	0
Kirkland Lake	2,051.78	148	136	9	3	0
North Bay	3,310.32	183	140	31	12	0
Sault Ste. Marie	1,061.60	82	76	4	2	0
Sudbury	5,169.66	159	117	24	18	0
Timmins	2,146.71	131	117	9	5	0
Wawa	2,360.41	159	141	11	7	0
Sub-Total	24,091.92	1,210	1,030	124	56	0
NORTHWEST						
Dryden	2,443.88	165	144	10	11	0
Fort Frances	2,529.65	207	181	8	18	0
Kenora	3,210.34	178	124	25	29	0
Nipigon	3,543.44	201	162	17	22	0
Red Lake	1,268.69	69	61	5	3	0
Sioux Lookout	2,567.55	87	82	2	3	0
Thunder Bay	4,783.46	163	117	31	15	0
Sub-Total	20,347.01	1,070	871	98	101	0
SOUTHCENTRAL						
Aylmer	0.10	1	0	0	0	1
Bancroft	1,384.31	68	52	16	0	0
Guelph (Cambridge)	0.00	0	0	0	0	0
Kemptville	2.00	1	1	0	0	0
Parry Sound	891.55	83	56	19	8	0
Pembroke	128.95	32	31	1	0	0
Peterborough (Tweed)	38.55	3	0	2	1	0
Sub-Total	2,445.46	188	140	38	9	1
TOTAL	46,884.39	2,468	2,041	260	166	1

APPENDIX A

GLOSSARY OF TERMS

For actual definitions, please refer to the Aggregate Resources Act.

Active Licence

A licence that has been issued, being transferred, or under suspension at the end of the calendar year.

Aggregate

Includes sand, gravel, limestone, dolostone, crushed stone, rock other than metallic ores, and other prescribed material.

Aggregate Permit

A permit for a pit or quarry issued under the Aggregate Resources Act allowing for the excavation of aggregate that is the property of the Crown, on land where the surface rights are the property of the Crown, or from land under water.

ALPS

The Aggregate Licence and Permit System (ALPS) is an automated data base that facilitates the management of mineral aggregate production and related information, for individual licences, aggregate permits and wayside permits across the province.

Building Dimension

A slab or block of rock, flagstone if foliated and dimension stone if massive, generally rectangular, and cut to specified measurements for ornamental surfacing in buildings or other construction applications.

Clay/Shale

Clay is a fine-grained, natural, earthy material composed primarily of hydrous aluminum silicates. It is plastic when moist and hardens when dried. Shale is fine-grained sedimentary laminated rock predominantly composed of clay grade and other fine minerals.

Class A Licence

A licence under the Aggregate Resources Act to allow excavation of more than 20,000 tonnes of aggregate annually from a pit or quarry within parts of Ontario that have been designated under the Aggregate Resources Act.

Class B Licence

A licence under the Aggregate Resources Act to allow excavation of 20,000 tonnes or less of aggregate annually from a pit or quarry within parts of Ontario that have been designated under the Aggregate Resources Act.

Crown Land

Ownership of land which is vested in the Crown or owned by the Province of Ontario.

Crushed Stone

Rock or stone mechanically crushed to specified sizes and grading.

Designated Area

An area of the Province identified by regulation under the Aggregate Resources Act where a person requires a licence for the excavation of aggregate from private land.

Disturbed Area

An area within a site that has been, or is being excavated to operate a pit or quarry, and has not been rehabilitated.

Gravel

Small stones and pebbles or a mixture of sand and small stones. More specifically, fragments of rock worn by the action of air and water, larger and coarser than sand. MTO specifications define gravel as unconsolidated granular material greater than 4.75mm.

Housing Starts

The number of housing units started where construction has advanced to 100 per cent of footings. In case of multiple dwellings, a "start" implies the commencement of individual structures.

Inactive Licence

A licence that has been revoked or surrendered prior to the end of the calendar year.

Licence

A licence for a pit or quarry issued under the Aggregate Resources Act allowing for the extraction of aggregate in designated areas.

Licensed Area

A specific area for which a licence has been issued for the extraction of mineral aggregates under the Aggregate Resources Act.

Pit

Land or land under water from which unconsolidated aggregate is being or has been excavated, and has not been rehabilitated.

Private Land

Land owned by an individual or corporation, as opposed to land which is owned by the Crown.

Progressive Rehabilitation

As per the requirements of the Aggregate Resources Act, sequential rehabilitation completed within reasonable time over disturbed land from which aggregate has been extracted. The rehabilitation is carried out according to the Act, the regulations, the site plan, and the conditions of the licence or permit during the period that aggregate is being extracted.

Pits & Quarries Control Act

An Act to manage and regulate mineral aggregate extraction in Ontario. The Act had been automatically repealed and replaced by the Aggregate Resources Act as of January 1, 1990.

Quarry

Land or land under water from which consolidated rock is or has been excavated and the site has not been rehabilitated.

Rehabilitation

To treat the land from which aggregate has been excavated to a pre-excitation condition or use, or to a condition compatible with adjacent land.

Royalty

A payment made to the Crown in recognition of the extraction of aggregates owned by the Crown. Under the Aggregate Resources Act, the royalty is set at a minimum of 50 cents per tonne. The Minister may set a higher rate or may allow exemption.

Sand

Any hard granular rock material finer than gravel and coarser than dust. MTO specifications define sand as granular material ranging in size from .075mm to 4.75 mm.

Wayside Permit

A permit issued to a public authority or a person who has a contract with a public authority for a temporary road project or an urgent project for which no alternative source of aggregate is available under licence or permit. A wayside permit expires 18 months from the date of issue or upon completion of the project, whichever comes first.

APPENDIX B

**HISTORICAL DESIGNATION OF PRIVATE LAND UNDER THE
PITS AND QUARRIES CONTROL ACT AND
THE AGGREGATE RESOURCES ACT**

(by Geographic Twp)

Designations under the Pits and Quarries Control Act (1971-1989)

DECEMBER 19, 1971

Adjala	Euphrasia	Nottawasaga
Albemarle	Flamborough East	Osprey
Albion	Flamborough West	Pelham
Amabel	Grantham	Reach
Ancaster	Grimsby North	Saltfleet
Artemesia	Holland	Stamford
Barton	Keppel	St. Edmunds
Beverly	Lindsay	St. Vincent
Caledon	London	Sydenham
Chinguacousy	Louth	Thorold
Clinton	Melancthon	Toronto Gore
Collingwood	Mono	Trafalgar
Derby	Mulmur	Westminster
Eastnor	Nassagaweya	West Nissouri
Erin	Nelson	Whitby
Esquesing	Niagara	Whitchurch

MARCH 3, 1972

Brock	Lobo	Pickering
East Whitby	Markham	Toronto
Gloucester	Nepean	Vaughan
Hallowell	Osgoode	

MAY 9, 1972

Brantford	Pittsburgh	South Dumfries
Guelph	Puslinch	Waterloo
Kingston	North Dumfries	

AUGUST 15, 1973

Anderdon	Dereham	Humberstone
Bertie	Dunn	Huntley
Blenheim	Eramosa	King
Brighton	Fitzroy	Malden
Clarke	Gosfield South	Manvers
Colchester North	Gosfield North	March
Colchester South	Haldimand	Mersea
Cramahe	Hamilton	Murray
Crowland	Harwich	Nichol
Darlington	Hope	North Cayuga

North Gower
North Oxford
Oneida
Orillia
Oro
Pilkington
Raleigh
Romney

Sidney
Sunnidale
Thurlow
Tilbury East
Tyendinaga
Uxbridge
Vespra
Walpole

Wellesley
West Oxford
Willoughby
Wilmot
Woodhouse
Woolwich
Yarmouth

FEBRUARY 15, 1974

Delaware
North Dorchester

MAY 17, 1974

Pelee

MAY 1, 1975

Alnwick
Amaranth
Arran
Arthur
Asphodel
Balfour
Bayham
Belmont
Bexley
Biddulph
Binbrook
Blandford
Blanshard
Blezard
Bowell
Broder
Burford
Caistor
Camden
Capreol
Cartwright
Cavan
Charlotteville
Chatham
Creighton
Cumberland
Denison
Dieppe
Dill
Douro
Dover
Dowling
Drury

Dryden
Dummer
East York
East Garafraxa
East Nissouri
East Luther
East Gwillimbury
East Oxford
East Zorra
Eldon
Emily
Ennismore
Essa
Etobicoke
Fairbank
Falconbridge
Fenelon
Flos
Gainsborough
Garson
Georgina
Glanford
Glenelg
Goulburn
Graham
Hanmer
Harvey
Houghton
Howard
Hutton
Innisfil
Levack
Lorne

Louise
Lumsden
MacLennan
Maidstone
Malahide
Mara
Mariposa
Marlborough
Maryborough
Matchedash
McKim
Medonte
Middleton
Minto
Morgan
Moulton
Neelon
Norman
North Monaghan
North Walsingham
North Norwich
North Gwillimbury
North York
Oakland
Onondaga
Ops
Orford
Otonabee
Peel
Percy
Proton
Rainham
Rama

Rawden
Rayside
Rochester
Sandwich, East
Sandwich, West
Scarborough
Scott
Scugog
Seneca
Seymour
Sherbrooke
Smith
Snider
South Walsingham

South Cayuga
South Dorchester
South Grimsby
South Norwich
South Monaghan
Sullivan
Tay
Tecumseh
Thorah
Tilbury, North
Tilbury, West
Tiny
Torbolton
Tosorontio

Townsend
Trill
Tuscarora
Verulam
Wainfleet
Waters
West Luther
West Garafraxa
West Gwillimbury
West Zorra
Windham
Wisner
York
Zone

APRIL 6, 1976

Great LaCloche Island
Little LaCloche Island

AUGUST 27, 1976

Avenge
Bosanquet
Carden

Korah
Parke
Prince

Rankin
St. Mary's
Tarentorus

JANUARY 1, 1981

Adelaide
Aldborough
All of the County of Perth
All of the County of Huron
All of the County of Lanark
Ameliasburgh
Athol
Bentinck
Brant
Brooke
Bruce
Carrick
City of Belleville
Culross
Dawn
Dunwich
E. Williams
Egremont
Elderslie
Elzevir and Grimsthorpe

Enniskillen
Euphemia
Exfrid
Greenock
Hillier
Hungerford
Huntingdon
Huron
Kincardine
Kinloss
Madoc
Marmora and Lake
McGillivray
Moore
Mosa
Normanby
North Marysburgh
Plympton
Sarnia
Saugeen

Separated Town of Trenton
Sombra
Sophiasburgh
South Marysburgh
Southwold
Town of Deseronto
Tudor
United Counties of Prescott
and Russell
United Counties of Stormont,
Dundas & Glengarry
United Counties of Leeds and
Grenville
Villages of Deloro, Frankford,
Madoc, Marmora, Stirling
and Tweed
W. Williams
Walford
Warwich
Wyoming

JULY 1, 1984

Storrington

Designations under the Aggregate Resources Act (Jan. 1, 1990)

APRIL 1, 1992

Adolphustown
Amherst Island
Bedford
Camden East
Dalton
Digby
Ernestown

Howe Island
Laxton
Longford
Loughborough
North Fredericksburgh
Portland
Richmond

Somerville
South Fredericksburgh
Town of Napanee
Villages of Bath and
Newburgh
Wolfe Island

SEPTEMBER 1, 1993

Admaston
Alice and Fraser
Bagot and Blithfield
Bromley
City of Pembroke
Horton

McNab
Pembroke
Petawawa
Ross
Stafford

Towns of Arnprior and
Renfrew
Villages of Beachburg,
Braeside, Cobden and
Petawawa
Westmeath

JANUARY 1, 1998

Anderson
Appleby
Archibald
Aweres
Awrey
Baldwin
Burwash
Cartier
Cascaden
Casimir
Chesley Additional
Cleland
Cosby
Curtin
Delamere
Dennis
Deroche
Duncan
Dunnet
Eden
Fenwick
Fisher
Foster
Foy

Gaudette
Gough
Hagar
Hallam
Harrow
Harty
Haviland
Hawley
Hendrie
Henry
Herrick
Hess
Hilton
Hodgins
Hoskin
Hyman
Jarvis
Jennings
Jocelyn
Johnson
Kars
Kehoe
Laird
Laura

Ley
Loughrin
Macdonald
May
McKinnon
Meredith and Aberdeen
Additional
Merritt
Mongowin
Nairn
Pennefather
Ratter
Secord
Servos
Shakespeare
Shields
St. Joseph
Street
Tarbutt and Tarbutt
Additional
Tilley
Tilton
Tupper
VanKoughnet

DECEMBER 4, 1999

Village of Hilton Beach

JULY 22, 2004

Andre
Bostwick
Franchere
Groseilliers
Legarde

Levesque
Macaskill
Menzies
Michipicoten
Musquash

Rabazo
St. Germain
Warpula

Newly Designated Private Lands (Effective January 1, 2007)

1. Those parts of the County of Frontenac consisting of the townships of Central Frontenac and North Frontenac.
2. Those parts of the County of Renfrew consisting of,
 - a) the Township of Bonnechere Valley, the Township of Brudenell, Lyndoch and Raglan, the Township of Head, Clara and Maria, the Township of Killaloe, Hagarty and Richards, the Township of Madawaska Valley and the Township of North Algona Wilberforce;
 - b) the Township of Greater Madawaska, except the townships of Bagot and Blythfield; and
 - c) the towns of Deep River and Laurentian Hills.
3. Those parts of the County of Lennox and Addington consisting of,
 - a) the Township of Addington Highlands; and
 - b) the Township of Stone Mills, except the Township of Camden East.
4. Those parts of the County of Hastings consisting of,
 - a) the Town of Bancroft;
 - b) the townships of Carlow/Mayo, Faraday, Limerick and Wollaston;
 - c) the Municipality of Hastings Highlands; and
 - d) the Township of Tudor and Cashel, except the Township of Tudor.
5. Those parts of the County of Peterborough consisting of,
 - a) the Township of Galway-Cavendish-Harvey, except the Township of Harvey;
 - b) the Township of Havelock-Belmont-Methuen, except the Township of Belmont and the Town of Havelock; and
 - c) the Township of North Kawartha.
6. All of the County of Haliburton.
7. Those parts of the Territorial District of Nipissing consisting of,
 - a) the Town of Mattawa;
 - b) the City of North Bay;
 - c) the Municipality of West Nipissing;
 - d) the townships of Bonfield, Calvin, Chisholm, East Ferris, Mattawan, Papineau- Cameron and South Algonquin; and
 - e) the geographical townships of Airy, Anglin, Antoine, Ballantyne, Barron, Biggar, Bishop, Blyth, Boulter, Bower, Boyd, Bronson, Butler, Butt, Canisbay, Charlton, Clancy, Clarkson, Commanda, Deacon, Devine, Dickson, Eddy, Edgar, Finlayson, Fitzgerald, French, Freswick, Garrow, Gladman, Guthrie, Hammell, Hunter, Jocko, Lauder, Lyman, Lister, Lockhart, Master, McCraney, McLaughlin, McLaren, Merrick, Mulock, Niven, Notman, Olig, Osborne, Osler, Paxton, Peck, Pentland, Phelps, Poitras, Preston, Sproule, Stewart, Stratton, Thistle, White and Wilkes

8. All parts of the Territorial District of Parry Sound consisting of,
 - a) the townships of Armour, Carling, Joly, Machar, McKellar, McMurrich/Monteith, Nipissing, Perry, Ryerson, Seguin, Strong and The Archipelago;
 - b) the municipalities of Powassan, Magnetawan, McDougall, Callander and Whitestone;
 - c) the towns of Kearney and Parry Sound;
 - d) the villages of Burk's Falls, South River and Sundridge; and
 - e) the geographical townships of Bethune, Blair, Brown, East Mills, Gurd, Hardy, Harrison, Henvey, Laurier, Lount, McConkey, Mowat, Patterson, Pringle, Proudfoot, Shawanaga, Wallbridge and Wilson.

9. All parts of the Territorial District of Muskoka consisting of,
 - a) the towns of Bracebridge, Gravenhurst and Huntsville;
 - b) the townships of Georgian Bay, Lake of Bays and Muskoka Lakes; and
 - c) the District Municipality of Muskoka.

10. Those parts of the Territorial District of Sudbury consisting of,
 - a) the Municipality of French River, except the geographical townships of Cosby, Delamere and Hoskin;
 - b) the Township of Sables – Spanish River, except the geographical townships of Gough, Hallam, Harrow, May, McKinnon and Shakespeare;
 - c) the Town of Killarney;
 - d) the Municipality of Killarney;
 - e) those parts of the City of Greater Sudbury consisting of the geographical townships of Aylmer, Fraleck, Hutton, MacKelcan, Parkin, Rathburn and Scadding; and
 - f) the geographical townships of Bevin, Caen, Carlyle, Cox, Davis, Dunlop, Halifax, Humboldt, Janes, Kelly, Leinster, McCarthy, Munster, Porter, Roosevelt, Shibananing, Truman, Tyrone and Waldie.

11. All parts of the Territorial District of Manitoulin, except Great LaCloche Island and Little LaCloche Island.

12. Those parts of the Territorial District of Algoma consisting of,
 - a) the towns of Blind River, Bruce Mines and Thessalon;
 - b) the City of Elliot Lake;
 - c) the townships of The North Shore, Plummer Additional and Shedden;
 - d) the Municipality of Huron Shores; and
 - e) the geographical townships of Aberdeen, Boon, Bridgland, Brule, Cadeau, Curtis, Dablon, Daumont, Deagle, Gaiashk, Galbraith, Gerow, Gillmor, Grenoble, Hughes, Hurlburt, Hynes, Kane, Kincaid, Lamming, Laverendrye, Marne, McMahan, Montgomery, Morin, Nicolet, Norberg, Palmer, Parkinson, Patton, Peever, Plummer, Rix, Rose, Ryan, Slater, Smilsky, Wells, Whitman and Wishart.

13. Those parts of the Territorial District of Thunder Bay consisting of,
 - a) the City of Thunder Bay;
 - b) the Municipality of Neebing; and
 - c) the townships of Conmee, Dorion, Gillies, O'Conner, Oliver Paipoonge and Shuniah; and
 - d) the geographic townships of Gorham and Ware (designated January 1, 2016)

Please refer to the Revised Regulations of Ontario for accuracy.

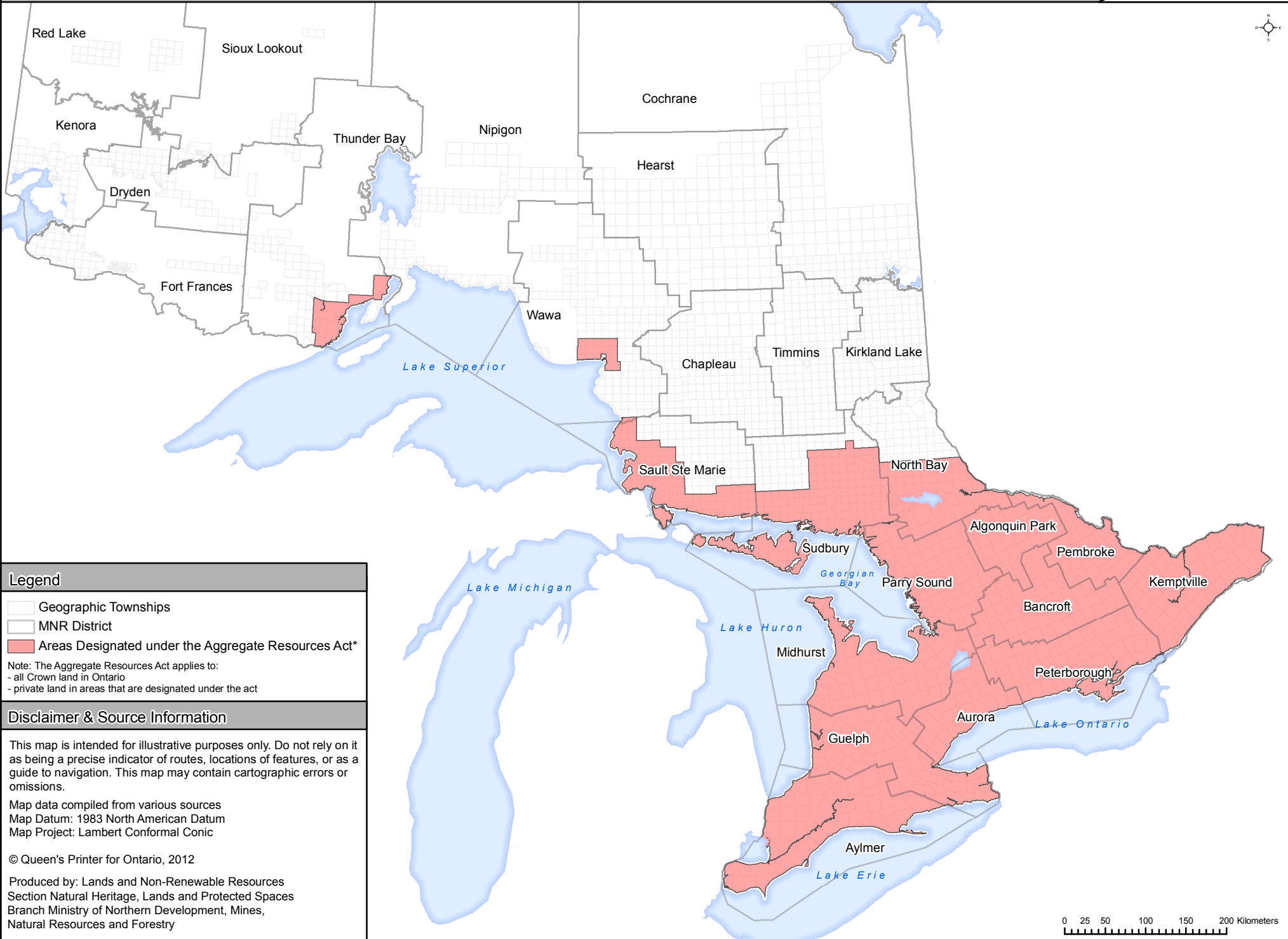
CANADIAN PORTLAND CEMENT ASSOCIATION* GEOGRAPHIC AREAS

* Now CAC - Cement Association of Canada



Area 1 Southwest	Area 2 Peninsula	Area 3 West Central	Area 4 GTA	Area 5 East Central	Area 6 East	Area 7 Northeast	Area 8 Northwest
Essex	Niagara	Bruce	Metro Toronto	Kawartha Lakes	Prescott & Russell	Nipissing	Algoma
Chatham-Kent	Brant	Grey	Peel	Peterborough	Leeds & Grenville	Parry Sound	Thunder Bay
Lambton	Haldimand	Simcoe	York	Haliburton	Stormont, Dundas, & Glengarry	Timiskaming	Kenora
Elgin	Norfolk	Dufferin	Durham	Northumberland	Frontenac	Cochrane	Rainy River
Middlesex	Hamilton	Wellington	Halton	Hastings	Greater Ottawa	Sudbury District	
Huron		Waterloo		Prince Edward	Lanark	Greater Sudbury	
Perth				Muskoka	Renfrew	Manitoulin	
Oxford					Lennox & Addington		

Areas Designated under the Aggregate Resources Act



Legend

- Geographic Townships
- MNR District
- Areas Designated under the Aggregate Resources Act*

Note: The Aggregate Resources Act applies to:
 - all Crown land in Ontario
 - private land in areas that are designated under the act

Disclaimer & Source Information

This map is intended for illustrative purposes only. Do not rely on it as being a precise indicator of routes, locations of features, or as a guide to navigation. This map may contain cartographic errors or omissions.

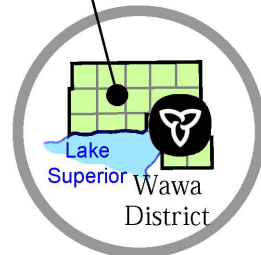
Map data compiled from various sources
 Map Datum: 1983 North American Datum
 Map Project: Lambert Conformal Conic

© Queen's Printer for Ontario, 2012

Produced by: Lands and Non-Renewable Resources
 Section Natural Heritage, Lands and Protected Spaces
 Branch Ministry of Northern Development, Mines,
 Natural Resources and Forestry



Corey Young (ATS)
 T: 705.856.4751
 F: 705.856.7511
 corey.young2@ontario.ca
Wawa District



Bill May (RMS)
 T: 705.941.5110
 F: 705.949.6450
 bill.may@ontario.ca
Sault Ste. Marie District

Randy Smith (ATS)
 T: 705.618.1932
 F: 705.564.7879
 randy.r.smith@ontario.ca
Sudbury District

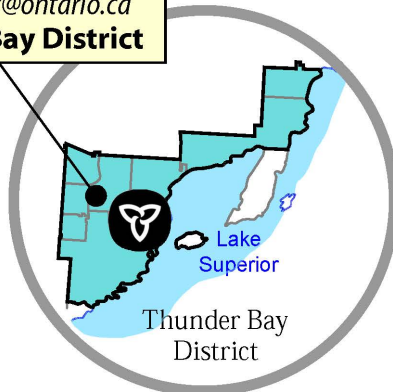
Remi Labreche (ATS)
 T: 705.475.5531
 F: 705.475.5500
 remi.labreche@ontario.ca
North Bay District

Jeff Schosser (ATS)
 T: 705.646.5526
 F: 705.645.8372
 jeff.schosser@ontario.ca
**Parry Sound District
 Bracebridge Office**

Scott Bird (ATS)
 T: 613.334.2926
 F: 705.286.4355
 scott.bird@ontario.ca
**Bancroft District
 Minden Office**

Shane Stuart (ATS)
 T: 613.504.2306
 F: 613.732.2972
 shane.stuart@ontario.ca
Pembroke District

Sonya Zuber (ATS)
 T: 807.708.3405
 F: 807.475.1527
 sonya.zuber@ontario.ca
Thunder Bay District



Sid Larson (ATS)
 T: 705.773.4233
 F: 705.746.8828
 sid.larson@ontario.ca
Parry Sound District

Aggregates Staff
 T: 705.725.7500 ext.4
 F: 705.725.7584
 midhurst.aggregates@ontario.ca
Midhurst District

Christopher Bierman (ATS)
 T: 613.301.5593
 F: 613.258.3920
 christopher.bierman@ontario.ca
Kemptville District

Darren Bonenberg (ATS)
 T: 437.881.9325
 F: 613.531.5730
 darren.bonenberg@ontario.ca
Peterborough District

Pankaj Vaishnav (ATS)
 T: 705.772.9539
 F: 613.531.5730
 pankaj.vaishnav@ontario.ca
Peterborough District

Emily Moore (ATS)
 T: 289.221.2435
 F: 905.713.7361
 emily.c.moore@ontario.ca
Aurora District

Meghan Gerrie (ATS)
 T: 226.962.7791
 F: 519.826.4929
 meghan.gerrie@ontario.ca
Guelph District

Stephen Douglas (ATS)
 T: 548.388.8047
 F: 519.773.9014
 stephen.douglas@ontario.ca
Aylmer District

ANNUAL AGGREGATE LICENCE / PERMIT FEE 2021 (adjusted annually subject to inflation see: https://www.ontario.ca/page/aggregate-resources#section-13)	
Charge	2021 Production
Annual Fee - Class A Licences and Aggregate Permits authorized to remove more than 20,000 tonnes annually	20.8¢ / tonne or \$724, whichever is greater
Annual Fee - Class B Licences and Aggregate Permits authorized to remove 20,000 tonnes or less annually	20.8¢ / tonne or \$361, whichever is greater
Distribution	
Fees collected from licences, wayside permits and aggregate permits will be distributed approximately as follows:	
<ul style="list-style-type: none"> • 3% to the Aggregate Resources Trust Fund for rehabilitation and research • 61% to the local municipality in which the site is located • 15% to the upper-tier municipality in which the site is located • 21% to the Crown (minimum) 	



Compiled by **MHBC Planning** with the cooperation and assistance of the Ministry of Natural Resources and Forestry, Aggregate Resources Program staff (February 2021)

2021 MNR District Aggregate Staff

ATS: Aggregate Technical Specialist
RMS: Resource Management Supervisor

AGGREGATE RESOURCES ACT DESIGNATED AREAS

PLANNING URBAN DESIGN & LANDSCAPE ARCHITECTURE

Kitchener	519.576.3650
Woodbridge	905.761.5588
London	519.858.2797
Kingston	613.384.7067
Barrie	705.728.0045
Burlington	905.639.8686