



# AGGREGATE RESOURCES STATISTICS IN ONTARIO

## PRODUCTION STATISTICS 2023

**94,000  
TONNES**  
of aggregate are needed to build a hospital

**36,000  
TONNES**  
of aggregate are used to build 1 km of a 4-lane highway

**250  
TONNES**  
of aggregate are needed to build the average home

**\$1.6  
BILLION**  
is the annual contribution of aggregate to the Ontario GDP

# AGGREGATE FOUNDATIONS

# **AGGREGATE RESOURCES STATISTICS IN ONTARIO**

## **PRODUCTION STATISTICS**

**2023**

### **READER'S NOTE**

The information in this document is based on production statistics reported to June 30, 2024. This document will be revised following December 31<sup>st</sup>, 2024 and will be considered final at that time. It is believed that aggregate production for 2023 is substantially reported in this document and gross numbers should remain unchanged in the final version. However, some numbers will change at the municipal level.

**Prepared by**

**The Ontario Aggregate Resources Corporation**

## TABLE OF CONTENTS

Overview .....	1
----------------	---

### TABLES AND GRAPHS

1. Aggregate Production in Ontario 2011-2023 .....	2
2. Licence and Wayside Permit Production by Lower Tier Municipality .....	3
3. Licence and Wayside Permit Production by Upper Tier Municipality .....	9
4. The Top 10 Producing Municipalities .....	10
5. Number and Type of Aggregate Licences .....	11
6. Licenced Aggregate Production by Commodity Type (MNR Districts).....	12
7. Aggregate Permit Production by Commodity Type (MNR Districts) .....	13
8. Aggregate Permit Production by Commodity Type (by year) .....	14
9. Aggregate Permit & Licence Production (CAC Geographic Areas) .....	15
10. Rehabilitation of Licenced Aggregate Sites .....	16
11. Number and Type of Aggregate Permits .....	17

### APPENDICES

- A. Glossary of Terms
- B. Historical Designation of Private Land under the Pits and Quarries Control Act and the Aggregate Resources Act
- C. CPCA (now CAC) Geographic Areas
- D. Map of Areas Designated under the Aggregate Resources Act
- E. MNR Work Centres Map
- F. MNR District Boundaries, Districts and Work Centres, Southern Region and Districts, Northwest Region and Districts, Northeast Region and Districts

Additional copies of this report may be obtained at a cost of \$5.00 each to cover preparation and postage from:

The Ontario Aggregate Resources Corporation  
1001 Champlain Avenue, Suite 103  
Burlington, ON L7L 5Z4  
Toll Free 1-866-308-6272  
or Telephone (905) 319-7424  
or Fax (905) 319-7423

Cette publication spécialisée n'est disponible qu'en anglais

For internal use only.

*In order for TOARC to better meet the needs of those using this publication,  
we welcome any comments or suggestions.*

You may send your comments/suggestions to the attention of John DeRick,  
Database Administrator at the above address or fax number or contact him directly via  
email, [jrderick@toarc.com](mailto:jrderick@toarc.com)

# AGGREGATE RESOURCES STATISTICS IN ONTARIO

## Overview

The aggregate industry plays a foundational role within the Ontario economy. The economic activity generated by the industry is not only with the aggregate itself mined in Ontario but as feedstock to industries that use the raw materials for construction and manufacturing including; cement and concrete products, asphalt, chemicals, clay, glass, and other aggregate-based products.

Aggregate resources are used in the everyday lives of all Ontario residents, and make up an integral part of our roads, sidewalks, sewers, subway tunnels and airports, as well as our homes, offices, hospitals, schools and shopping centres. Aggregates contribute \$1.6B to the Ontario GDP annually.

In 2023, there were 3,565 licences for pits and quarries on private land in areas designated under the Aggregate Resources Act (refer to Appendix D – Map of Areas Designated), and 2,429 aggregate permits on Crown land and 1 wayside permit.

## Aggregate Production

Production of mineral aggregates in 2023 totaled just over 167.7 million tonnes, a decrease of 5.8 million tonnes or -3.3% less than the tonnage reported in the previous year. Production from licenced operations was down 6.3 million tonnes or -3.9% compared to 2002 (156.2 million in 2023 from 162.5 million tonnes in 2022). Forestry Aggregate Pits (formerly Category 14) pit production has remained the same. One Wayside permit was issued in 2023; small volume production reduction to 0.200 million in 2023 from 0.251 million in 2022. Production from aggregate permits on Crown Land increased 10.1% from 2022 (7.06 million in 2023 from 6.41 million tonnes in 2022).

Note: Totals and percentage changes are based on numbers from Table 2, 8 format.

## **Note to the Reader:**

The statistics in this report reflects aggregate sites that fall within the Designated Area of the Pits and Quarries Control Act or the more recent Aggregate Resources Act. This geographical area has increased periodically throughout the years resulting in increases in licensed or permitted sites subject to the applicable Act, which are not necessarily new aggregate sites being created. Please refer to Appendix B for a list of the historical designation of private land under the Pits and Quarries Control Act and the Aggregate Resources Act.

Data used to in this report for statistics on changes to the disturbed areas, including new rehabilitated area and new disturbed area is supplied by licencees and permittees and are not independently audited by TOARC. This data reflects what is reported on Compliance Assessment reports submitted to the Ministry of Natural Resources.

Table 1

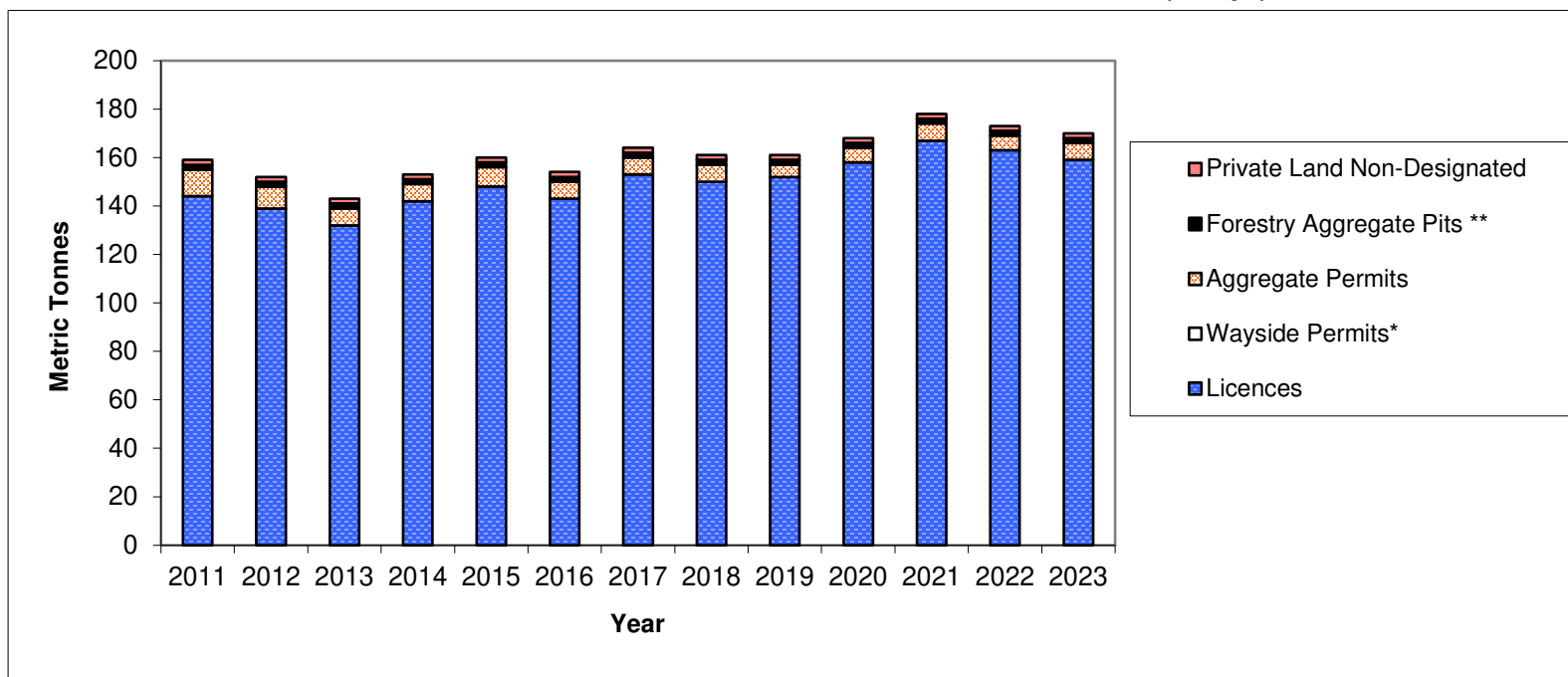
**AGGREGATE PRODUCTION IN ONTARIO - 2011 - 2023**  
(rounded to nearest million tonnes)

	2011	2012	2013	2014	2015	2016	2017	2018	2019	2020	2021	2022	2023
<b>Licences</b>	144	139	132	142	148	143	153	150	152	158	167	163	156
<b>Wayside Permits*</b>	0	0	0	0	0	0	0	0	0	0	0	0	0
<b>Aggregate Permits</b>	11	9	7	7	8	7	7	7	5	6	7	6	7
<b>Forestry Aggregate Pits **</b>	2	2	2	2	2	2	2	2	2	2	2	2	2
<b>Private Land Non-Designated (estimated)</b>	2	2	2	2	2	2	2	2	2	2	2	2	2
<b>ONTARIO TOTAL</b>	<b>159</b>	<b>152</b>	<b>143</b>	<b>153</b>	<b>160</b>	<b>154</b>	<b>164</b>	<b>161</b>	<b>161</b>	<b>168</b>	<b>178</b>	<b>173</b>	<b>167</b>

\*Wayside Permit production is reported as the 'total applied for' tonnage of all permits issued, adjusted where actual tonnages for completed contracts are known.

\*Actual production for Wayside Permits was zero tonnes for 2010 through 2014, .15 million tonnes for 2015, .35 million tonnes for 2016 through 2018,

.20 million tonnes for 2019, 2020, .35 million tonnes for 2021, .251 million tonnes for 2022, .20 million tonnes for 2023. \*\* Formerly Category 14



**Production Statistics Report**  
**Table 2 Lower Tier Grouping Guidelines**

The guiding principal is to not disclose the confidential information of a single client's tonnage.

1. There must be a least 3 clients with a minimum of 2 reporting tonnage, each with licenses, in any municipal (lower) tier that appears in the stats report.
2. If the above guideline can't be met then the grouping of lower tiers is required based on the following rules:
  - a. Upper tiers with multiple lower tier groups of 2 or less must be combined for the 3 client minimum lower tier grouping provided there are at least 2 clients reporting tonnage.
  - b. The preferred criteria for determining groups will be based on geographical proximity.
  - c. A single lower tier reporting ZERO tonnage is not reported if it is not required for the above minimum 3 client grouping.
  - d. If geographic proximity can't be resolved then historical (grouping of past stats reports) will determine grouping.

Table 2

**2023 LICENCE AND WAYSIDE PERMIT PRODUCTION  
BY LOWER TIER MUNICIPALITY**  
(Reported in Metric Tonnes)

<b>Municipality</b>	<b>Licences</b>	<b>Wayside Permits</b>	<b>Total</b>
<b>Algoma District</b>			
Algoma District, Unorganized	101,122.58		101,122.58
Blind River, Town of	68,170.47		68,170.47
Bruce Mines, Town of/Plummer Additional Tp	1,762,775.08		1,762,775.08
Elliot Lake, City of/Spanish, Town of/The North Shore Tp	39,149.30		39,149.30
Huron Shores, Municipality of	690,575.41		690,575.41
Johnson Tp/Tarbutt & Tarbutt Add'l Tp/Hilton TP/Jocelyn Tp/St. Joseph Tp	72,253.00		72,253.00
Sault Ste. Marie, City of/Prince Tp/Wawa	560,648.07		560,648.07
<b>Sub-Total</b>	<b>3,294,693.91</b>	<b>0.00</b>	<b>3,294,693.91</b>
<b>Brant</b>			
Brant, County of/Brantford, City of	2,982,200.81		2,982,200.81
<b>Sub-Total</b>	<b>2,982,200.81</b>	<b>0.00</b>	<b>2,982,200.81</b>
<b>Bruce</b>			
Arran-Elderslie, Municipality of	165,676.79		165,676.79
Huron-Kinloss Tp	168,740.30		168,740.30
Kincardine, Municipality of/Brockton, Municipality of	28,416.60		28,416.60
Northern Bruce Peninsula, Municipality of	126,479.81		126,479.81
Saugeen Shores, Town of	139,279.90		139,279.90
South Bruce Peninsula, Town of	428,714.81		428,714.81
South Bruce, Municipality of	703,335.87		703,335.87
<b>Sub-Total</b>	<b>1,760,644.08</b>	<b>0.00</b>	<b>1,760,644.08</b>
<b>Chatham-Kent</b>			
Chatham-Kent, Municipality of	277,470.76		277,470.76
<b>Sub-Total</b>	<b>277,470.76</b>	<b>0.00</b>	<b>277,470.76</b>
<b>Dufferin</b>			
Amaranth Tp/East Luther Grand Valley Tp	111,160.03		111,160.03
East Garafraxa Tp	923,760.70		923,760.70
Melancthon Tp	622,211.79		622,211.79
Mono Tp	266,336.06		266,336.06
Mulmur Tp	182,571.04		182,571.04
<b>Sub-Total</b>	<b>2,106,039.62</b>	<b>0.00</b>	<b>2,106,039.62</b>
<b>Durham</b>			
Brock Tp	944,245.08		944,245.08
Clarington, Municipality of	3,953,215.09		3,953,215.09
Oshawa, City of/Scugog Tp	96,343.84		96,343.84
Uxbridge Tp	2,897,463.18		2,897,463.18
<b>Sub-Total</b>	<b>7,891,267.19</b>	<b>0.00</b>	<b>7,891,267.19</b>
<b>Elgin</b>			
Bayham/West Elgin, Municipality of/Malahide Tp	160,452.71		160,452.71
Central Elgin, Municipality of	148,920.46		148,920.46
<b>Sub-Total</b>	<b>309,373.17</b>	<b>0.00</b>	<b>309,373.17</b>
<b>Essex</b>			
Amherstburg, Town of/Leamington, Municipality of/Pelee Tp	2,407,459.34		2,407,459.34
Kingsville, Town of	154,002.00		154,002.00
<b>Sub-Total</b>	<b>2,561,461.34</b>	<b>0.00</b>	<b>2,561,461.34</b>
<b>Frontenac</b>			
Central Frontenac Tp	106,590.13		106,590.13
Frontenac Islands Tp	42,360.02		42,360.02
Kingston, City of	914,169.57		914,169.57
North Frontenac Tp	145,181.72		145,181.72
South Frontenac Tp	331,529.65		331,529.65
<b>Sub-Total</b>	<b>1,539,831.09</b>	<b>0.00</b>	<b>1,539,831.09</b>



Table 2

**2023 LICENCE AND WAYSIDE PERMIT PRODUCTION  
BY LOWER TIER MUNICIPALITY**  
(Reported in Metric Tonnes)

<b>Municipality</b>	<b>Licences</b>	<b>Wayside Permits</b>	<b>Total</b>
<b>Greater Sudbury</b>			
Greater Sudbury, City of	2,127,311.48		2,127,311.48
<b>Sub-Total</b>	<b>2,127,311.48</b>	<b>0.00</b>	<b>2,127,311.48</b>
<b>Grey</b>			
Chatsworth Tp	545,801.43		545,801.43
Georgian Bluffs Tp	590,961.91		590,961.91
Grey Highlands, Municipality of	1,650,991.61		1,650,991.61
Meaford, Municipality of	488,403.99		488,403.99
Southgate Tp	647,600.47		647,600.47
The Blue Mountains, Town of	96,323.20		96,323.20
West Grey, Municipality of	747,852.32		747,852.32
<b>Sub-Total</b>	<b>4,767,934.93</b>	<b>0.00</b>	<b>4,767,934.93</b>
<b>Haldimand</b>			
Haldimand, County of	1,651,850.00		1,651,850.00
<b>Sub-Total</b>	<b>1,651,850.00</b>	<b>0.00</b>	<b>1,651,850.00</b>
<b>Haliburton</b>			
Algonquin Highlands Tp	128,438.10		128,438.10
Dysart et al Tp	463,110.99		463,110.99
Minden Hills Tp/Highlands East Tp	171,185.05		171,185.05
<b>Sub-Total</b>	<b>762,734.14</b>	<b>0.00</b>	<b>762,734.14</b>
<b>Halton</b>			
Burlington, City of/Halton Hills, Town of	3,750,555.59		3,750,555.59
Milton, Town of	499,608.00		499,608.00
<b>Sub-Total</b>	<b>4,250,163.59</b>	<b>0.00</b>	<b>4,250,163.59</b>
<b>Hamilton</b>			
Hamilton, City of	8,747,452.00		8,747,452.00
<b>Sub-Total</b>	<b>8,747,452.00</b>	<b>0.00</b>	<b>8,747,452.00</b>
<b>Hastings</b>			
Bancroft, Town of/Limerick Tp	77,746.76		77,746.76
Belleville, City of	917,416.88		917,416.88
Carlo/Mayo Tp	3,497.60		3,497.60
Centre Hastings, Municipality of	286,902.14		286,902.14
Faraday Tp	44,072.92		44,072.92
Hasting Highlands, Municipality of	158,375.00		158,375.00
Madoc Tp	650,399.94		650,399.94
Marmora & Lake, Municipality of/Stirling-Rawdon Tp	25,504.35		25,504.35
Quinte West, City of	474,878.98		474,878.98
Tweed, Municipality of	84,042.00		84,042.00
Tyendinaga Tp	306,550.00		306,550.00
Wollaston Tp	28,321.44		28,321.44
<b>Sub-Total</b>	<b>3,057,708.01</b>	<b>0.00</b>	<b>3,057,708.01</b>
<b>Huron</b>			
Ashfield-Colborne-Wawanosh Tp	1,591,385.79		1,591,385.79
Central Huron, Municipality of/Bluewater, Municipality of	301,880.23		301,880.23
Howick Tp	656,151.45	200,000.00	856,151.45
Huron East, Municipality of/South Huron, Municipality of	653,758.06		653,758.06
Morris-Turnberry, Municipality of	187,641.97		187,641.97
North Huron Tp	167,342.00		167,342.00
<b>Sub-Total</b>	<b>3,558,159.50</b>	<b>200,000.00</b>	<b>3,758,159.50</b>
<b>Kawartha Lakes</b>			
Kawartha Lakes, City of	6,280,237.15		6,280,237.15
<b>Sub-Total</b>	<b>6,280,237.15</b>	<b>0.00</b>	<b>6,280,237.15</b>

Table 2

**2023 LICENCE AND WAYSIDE PERMIT PRODUCTION  
BY LOWER TIER MUNICIPALITY**  
(Reported in Metric Tonnes)

<b>Municipality</b>	<b>Licences</b>	<b>Wayside Permits</b>	<b>Total</b>
<b>Lambton</b>			
Lambton Shores, Municipality of	291,766.02		291,766.02
Warwick Tp/Plympton-Wyoming, Town of	319,112.62		319,112.62
<b>Sub-Total</b>	<b>610,878.64</b>	<b>0.00</b>	<b>610,878.64</b>
<b>Lanark</b>			
Beckwith Tp/Drummond-North Elmsley Tp	298,874.93		298,874.93
Lanark Highlands Tp/Tay Valley Tp	1,203,071.59		1,203,071.59
Mississippi Mills, Town of	367,069.27		367,069.27
Montague Tp	237,030.06		237,030.06
<b>Sub-Total</b>	<b>2,106,045.85</b>	<b>0.00</b>	<b>2,106,045.85</b>
<b>Leeds &amp; Grenville</b>			
Athens Tp/Front of Yonge Tp/Leeds and Thousand Islands Tp	657,381.51		657,381.51
Augusta Tp	40,176.73		40,176.73
Edwardsburgh-Cardinal Tp	210,447.84		210,447.84
Elizabethtown-Kitley Tp/Merrickville-Wolford, Village of	528,537.83		528,537.83
North Grenville Tp	642,065.14		642,065.14
Rideau Lakes Tp	132,974.45		132,974.45
<b>Sub-Total</b>	<b>2,211,583.50</b>	<b>0.00</b>	<b>2,211,583.50</b>
<b>Lennox &amp; Addington</b>			
Addington Highlands Tp	20,834.59		20,834.59
Greater Napanee, Town of	350,643.00		350,643.00
Loyalist Tp	1,705,787.98		1,705,787.98
Stone Mills Tp	83,075.56		83,075.56
<b>Sub-Total</b>	<b>2,160,341.13</b>	<b>0.00</b>	<b>2,160,341.13</b>
<b>Manitoulin District</b>			
Assignack Tp/Billings Tp	1,707.00		1,707.00
Central Manitoulin Tp/Tehkummah Tp	53,993.72		53,993.72
Gordon/Barrie Island/Burpee & Mills Tp/Cockburn Island Tp	35,139.40		35,139.40
Northeastern Manitoulin & The Islands	162,760.04		162,760.04
Unorganized - Manitoulin D	3,265,308.19		3,265,308.19
<b>Sub-Total</b>	<b>3,518,908.35</b>	<b>0.00</b>	<b>3,518,908.35</b>
<b>Middlesex</b>			
Adelaide Metcalfe Tp/Strathroy-Caradoc Tp	166,118.00		166,118.00
London, City of	268,784.59		268,784.59
Lucan Biddulph Tp/North Middlesex, Municipality of	104,855.70		104,855.70
Middlesex Centre Tp	158,570.97		158,570.97
Thames Centre, Municipality of	2,398,405.45		2,398,405.45
<b>Sub-Total</b>	<b>3,096,734.71</b>	<b>0.00</b>	<b>3,096,734.71</b>
<b>Muskoka</b>			
Bracebridge, Town of	1,060,578.85		1,060,578.85
Gravenhurst, Town of/Georgian Bay Tp	214,163.76		214,163.76
Huntsville, Town of	1,113,863.58		1,113,863.58
Lake of Bays Tp	168,564.51		168,564.51
Muskoka Lakes Tp	327,291.95		327,291.95
<b>Sub-Total</b>	<b>2,884,462.65</b>	<b>0.00</b>	<b>2,884,462.65</b>
<b>Niagara</b>			
Fort Erie, Town of/Pelham, Town of/Port Colborne, City of/Wainfleet Tp	2,693,180.96		2,693,180.96
Lincoln, Town of/Niagara-on-the-Lake, Town of/Niagara Falls, City of	1,712,011.72		1,712,011.72
<b>Sub-Total</b>	<b>4,405,192.68</b>	<b>0.00</b>	<b>4,405,192.68</b>

Table 2

**2023 LICENCE AND WAYSIDE PERMIT PRODUCTION  
BY LOWER TIER MUNICIPALITY**  
(Reported in Metric Tonnes)

<b>Municipality</b>	<b>Licences</b>	<b>Wayside Permits</b>	<b>Total</b>
<b><i>Nipissing District</i></b>			
Bonfield Tp	127,207.85		127,207.85
Calvin Tp/East Ferris, Municipality of	67,714.71		67,714.71
Chisholm Tp	26,591.00		26,591.00
Mattawan Tp/South Algonquin Tp/Papineau-Cameron Tp/Unorganized - Nipissing D	37,058.02		37,058.02
North Bay, City of	459,060.08		459,060.08
West Nipissing, Municipality of	402,720.89		402,720.89
Unorganized - Manitoulin D	4,011.00		4,011.00
<b>Sub-Total</b>	<b>1,124,363.55</b>	<b>0.00</b>	<b>1,124,363.55</b>
<b><i>Norfolk</i></b>			
Norfolk, County of	871,055.67		871,055.67
<b>Sub-Total</b>	<b>871,055.67</b>	<b>0.00</b>	<b>871,055.67</b>
<b><i>Northumberland</i></b>			
Alnwick-Haldimand Tp	409,852.09		409,852.09
Brighton, Municipality of	507,828.98		507,828.98
Cramahe Tp	2,088,996.49		2,088,996.49
Hamilton Tp	70,666.00		70,666.00
Port Hope, Municipality of	46,734.60		46,734.60
Trent Hills, Municipality of	241,405.00		241,405.00
<b>Sub-Total</b>	<b>3,365,483.16</b>	<b>0.00</b>	<b>3,365,483.16</b>
<b><i>Ottawa</i></b>			
Ottawa, City of	9,686,097.56		9,686,097.56
<b>Sub-Total</b>	<b>9,686,097.56</b>	<b>0.00</b>	<b>9,686,097.56</b>
<b><i>Oxford</i></b>			
Blandford-Blenheim Tp	572,461.41		572,461.41
East Zorra-Tavistock Tp/Norwich Tp	199,656.27		199,656.27
South-West Oxford Tp	1,701,836.60		1,701,836.60
Zorra Tp	5,538,393.18		5,538,393.18
<b>Sub-Total</b>	<b>8,012,347.46</b>	<b>0.00</b>	<b>8,012,347.46</b>
<b><i>Parry Sound District</i></b>			
Armour Tp/Burks Falls, Village of	66,490.36		66,490.36
Callander, Municipality of	36,535.00		36,535.00
Carling Tp/The Archipelago Tp/McKeller Tp	28,885.00		28,885.00
Kearney, Town of/Joly Tp	31,915.42		31,915.42
Macher Tp	37,517.60		37,517.60
Magnetawan, Municipality of	136,184.70		136,184.70
McDougall Tp/Parry Sound, Town of	53,993.42		53,993.42
McMurrich-Monteith Tp	20,872.00		20,872.00
Nipissing Tp	26,776.00		26,776.00
Perry Tp	51,206.62		51,206.62
Powassan, Municipality of	183,540.82		183,540.82
Ryerson Tp	34,843.24		34,843.24
Seguin Tp	502,287.60		502,287.60
Strong Tp	14,188.00		14,188.00
Unorganized - Parry Sound	179,394.64		179,394.64
Whitestone The Municipality of	34,247.48		34,247.48
<b>Sub-Total</b>	<b>1,438,877.90</b>	<b>0.00</b>	<b>1,438,877.90</b>
<b><i>Peel</i></b>			
Caledon, Town of	3,418,529.34		3,418,529.34
<b>Sub-Total</b>	<b>3,418,529.34</b>	<b>0.00</b>	<b>3,418,529.34</b>
<b><i>Perth</i></b>			
Perth East Tp/North Perth, Town of	392,476.53		392,476.53
Perth South Tp/St. Marys, Separated Town of	2,410,898.00		2,410,898.00
West Perth Tp	112,230.99		112,230.99
<b>Sub-Total</b>	<b>2,915,605.52</b>	<b>0.00</b>	<b>2,915,605.52</b>

Table 2

**2023 LICENCE AND WAYSIDE PERMIT PRODUCTION  
BY LOWER TIER MUNICIPALITY**  
(Reported in Metric Tonnes)

<b>Municipality</b>	<b>Licences</b>	<b>Wayside Permits</b>	<b>Total</b>
<b>Peterborough</b>			
Asphodel-Norwood Tp	583,886.00		583,886.00
Cavan-Millbrook-North Monaghan Tp/Otonabee-South Monaghan Tp	168,676.78		168,676.78
Douro-Dummer Tp	380,919.39		380,919.39
Havelock-Belmont-Methuen Tp	1,169,621.55		1,169,621.55
North Kawartha Tp	31,524.62		31,524.62
Selwyn Tp	194,412.94		194,412.94
Trent Lakes, Municipality of	904,880.80		904,880.80
<b>Sub-Total</b>	<b>3,433,922.08</b>	<b>0.00</b>	<b>3,433,922.08</b>
<b>Prescott &amp; Russell</b>			
Alfred & Plantagenet Tp	380,965.00		380,965.00
Clarence-Rockland, City of	85,863.20		85,863.20
East Hawkesbury Tp	395,545.41		395,545.41
Russell Tp	27,059.00		27,059.00
The Nation, Municipality of	227,510.12		227,510.12
<b>Sub-Total</b>	<b>1,116,942.73</b>	<b>0.00</b>	<b>1,116,942.73</b>
<b>Prince Edward Co</b>			
Prince Edward, County of	1,799,263.85		1,799,263.85
<b>Sub-Total</b>	<b>1,799,263.85</b>	<b>0.00</b>	<b>1,799,263.85</b>
<b>Renfrew</b>			
Admaston-Bromley Tp/Renfrew, Town of	212,917.83		212,917.83
Bonnechere Valley Tp	199,572.47		199,572.47
Brudenell, Lyndoc and Raglan Tp	14,014.00		14,014.00
Deep River Tp/Head, Clara & Maria Tp/Laurentian Hills	109,504.95		109,504.95
Greater Madawaska Tp	10,188.00		10,188.00
Horton Tp	233,611.55		233,611.55
Killaloe, Hagarty and Richards Tp	78,703.54		78,703.54
Laurentian Valley Tp	304,748.13		304,748.13
Madawaska Valley	158,849.30		158,849.30
McNab-Braeside Tp	309,370.05		309,370.05
North Algona-Wilberforce Tp	26,772.15		26,772.15
Petawawa, Town of	171,184.29		171,184.29
Whitewater Region Tp	182,338.50		182,338.50
<b>Sub-Total</b>	<b>2,011,774.76</b>	<b>0.00</b>	<b>2,011,774.76</b>
<b>Simcoe</b>			
Adjala-Tosorontio Tp/New Tecumseth, Town of	440,038.73		440,038.73
Clearview Tp	1,218,995.30		1,218,995.30
Collingwood, Town of/Essa Tp/Innisfil, Town of	9,840.84		9,840.84
Midland, Town of/Penetanguishine, Town of	304,725.00		304,725.00
Oro-Medonte Tp	2,268,350.90		2,268,350.90
Ramara Tp	3,469,478.31		3,469,478.31
Severn Tp	5,815,835.00		5,815,835.00
Springwater Tp	1,248,333.57		1,248,333.57
Tay Tp	151,714.96		151,714.96
Tiny Tp	646,701.92		646,701.92
<b>Sub-Total</b>	<b>15,574,014.53</b>	<b>0.00</b>	<b>15,574,014.53</b>
<b>Stormont, Dundas &amp; Glengarry</b>			
North Dundas Tp	524,397.23		524,397.23
North Glengarry Tp/South Glengarry Tp	335,826.46		335,826.46
North Stormont Tp	1,660,534.88		1,660,534.88
South Dundas Tp	174,443.90		174,443.90
South Stormont Tp	958,800.60		958,800.60
<b>Sub-Total</b>	<b>3,654,003.07</b>	<b>0.00</b>	<b>3,654,003.07</b>

Table 2

**2023 LICENCE AND WAYSIDE PERMIT PRODUCTION  
BY LOWER TIER MUNICIPALITY**  
(Reported in Metric Tonnes)

<b>Municipality</b>	<b>Licences</b>	<b>Wayside Permits</b>	<b>Total</b>
<b><i>Sudbury District</i></b>			
French River, Municipality of	154,696.44		154,696.44
Markstay-Warren, Municipality of	25,239.89		25,239.89
Sables Spanish Rivers Tp/Nairn & Hyman Tp/Espanola, Town of/Baldwin Tp	72,219.44		72,219.44
Sudbury District, Unorganized	303,073.45		303,073.45
<b>Sub-Total</b>	<b>555,229.22</b>	<b>0.00</b>	<b>555,229.22</b>
<b><i>Thunder Bay District</i></b>			
Conmee Tp	200,435.84		200,435.84
Neebing, Municipality of	30,620.60		30,620.60
Oliver Paipooonge, Municipality of	246,428.65		246,428.65
Shuniah Tp/Thunder Bay, City of	233,765.24		233,765.24
Thunder Bay District, Unorganized	567,384.49		567,384.49
<b>Sub-Total</b>	<b>1,278,634.82</b>	<b>0.00</b>	<b>1,278,634.82</b>
<b><i>Waterloo</i></b>			
Cambridge, City of/Kitchener, City of/Woolwich Tp	268,094.55		268,094.55
North Dumfries Tp	7,678,460.53		7,678,460.53
Wellesley Tp	977,462.61		977,462.61
Wilmot Tp	883,569.77		883,569.77
<b>Sub-Total</b>	<b>9,807,587.46</b>	<b>0.00</b>	<b>9,807,587.46</b>
<b><i>Wellington</i></b>			
Centre Wellington Tp	1,230,675.25		1,230,675.25
Erin, Town of	1,276,331.59		1,276,331.59
Guelph-Eramosa Tp/Mapleton Tp	239,663.97		239,663.97
Minto, Town of	193,610.00		193,610.00
Puslinch Tp	3,296,198.25		3,296,198.25
Wellington North Tp	298,991.56		298,991.56
<b>Sub-Total</b>	<b>6,535,470.62</b>	<b>0.00</b>	<b>6,535,470.62</b>
<b><i>York</i></b>			
East Gwillimbury, Town of/Georgina, Town of	78,656.60		78,656.60
Whitchurch-Stouffville, Town of	571,299.16		571,299.16
<b>Sub-Total</b>	<b>649,955.76</b>	<b>0.00</b>	<b>649,955.76</b>
<b>GRAND TOTAL</b>	<b>156,169,839.34</b>	<b>200,000.00</b>	<b>156,369,839.34</b>

Table 3

**LICENCE AND WAYSIDE PRODUCTION  
BY UPPER TIER MUNICIPALITY  
(Million Tonnes)**

<b>Municipality</b>	<b>2014</b>	<b>2015</b>	<b>2016</b>	<b>2017</b>	<b>2018</b>	<b>2019</b>	<b>2020</b>	<b>2021</b>	<b>2022</b>	<b>2023</b>
Algoma, District of	2.7	2.9	2.8	3.1	3.0	3.1	3.0	3.3	3.4	3.3
Brant Co.	1.6	1.9	1.7	2.2	2.6	2.6	3.0	3.4	2.8	3.0
Bruce Co.	1.8	2.0	1.5	1.7	1.8	1.6	2.0	1.8	1.8	1.8
Chatham-Kent, R. M. of	0.2	0.2	0.3	0.3	0.2	0.3	0.1	0.2	0.2	0.3
Dufferin Co.	2.7	2.3	2.2	2.2	1.8	2.1	2.1	2.5	2.2	2.1
Durham, R. M. of	10.3	10.0	9.5	9.3	9.4	8.6	8.7	8.7	8.2	7.9
Elgin Co.	0.4	0.3	0.4	0.5	0.5	0.4	0.4	0.7	0.5	0.3
Essex Co.	1.6	1.9	1.9	2.3	2.6	3.1	3.3	3.3	2.9	2.6
Frontenac Co.	2.0	1.8	1.6	2.3	2.0	2.0	2.3	2.0	1.7	1.5
Greater Sudbury, City of	2.8	3.1	2.6	2.5	2.1	2.6	2.6	2.2	2.4	2.1
Grey Co.	3.2	4.1	3.8	4.3	4.3	4.3	4.5	5.2	4.8	4.8
Haldimand Co.	1.5	0.8	1.1	1.0	1.1	1.2	1.6	1.3	1.1	1.7
Haliburton Co.	0.5	0.4	0.4	0.6	0.5	0.5	0.5	0.6	0.8	0.8
Halton, R. M. of	7.7	7.2	6.6	5.6	5.4	5.6	6.3	4.9	5.2	4.3
Hamilton, City of	5.2	5.9	5.9	5.6	6.0	6.9	6.8	6.7	7.9	8.7
Hastings Co.	3.1	2.9	2.8	3.1	2.8	2.7	2.5	3.1	3.1	3.1
Huron Co.	3.7	3.1	3.0	3.2	3.8	3.9	3.8	4.0	4.2	3.6
Kawartha Lakes, City of	5.5	7.0	6.5	6.8	7.2	7.0	6.4	6.4	6.2	6.3
Lambton Co.	0.7	0.6	0.5	0.5	0.6	0.6	0.6	0.5	0.7	0.6
Lanark Co.	1.7	1.9	1.8	2.1	2.2	1.9	2.0	2.4	2.6	2.1
Leeds & Grenville Co.'s	2.2	1.9	2.0	2.2	2.1	2.1	2.0	2.0	2.1	2.2
Lennox & Addington Co.	2.0	2.4	2.0	2.2	2.4	1.9	2.0	2.2	2.2	2.2
Manitoulin, District of	2.8	2.9	3.0	3.0	3.5	3.3	4.1	3.7	4.2	3.5
Middlesex Co.	3.6	3.7	4.0	4.6	4.7	3.9	4.0	3.6	3.4	3.1
Muskoka	2.0	2.3	2.2	2.7	2.4	2.6	2.9	3.6	3.1	2.9
Niagara, R. M. of	4.3	5.0	4.9	4.9	5.2	5.1	5.1	5.1	4.9	4.4
Nipissing, District of	1.2	1.2	1.0	0.9	0.9	1.0	0.9	1.1	1.2	1.1
Norfolk Co.	0.8	0.6	0.7	0.6	0.8	0.9	0.9	1.0	1.1	0.9
Northumberland Co.	2.6	3.1	3.4	3.2	3.1	3.4	3.1	3.3	3.1	3.4
Ottawa, City of	10.0	9.7	8.7	9.7	10.3	11.1	12.7	13.4	12.1	9.7
Oxford Co.	6.3	5.9	6.4	7.4	6.8	7.1	6.6	7.7	7.7	8.0
Parry Sound, District of	1.4	1.3	1.5	1.3	1.4	1.2	1.3	1.6	1.6	1.4
Peel, R. M. of	4.0	3.5	2.5	3.0	2.7	3.0	3.1	3.4	3.4	3.4
Perth Co.	2.5	2.6	2.6	2.6	2.5	2.5	2.6	3.1	2.9	2.9
Peterborough Co.	2.7	3.1	3.1	3.8	3.3	3.8	4.1	3.6	3.5	3.4
Prescott & Russell Co.'s	1.5	1.5	1.4	1.5	1.4	1.2	1.0	1.3	1.2	1.1
Prince Edward Co.	1.5	1.3	1.6	1.4	1.4	1.4	1.6	1.7	1.8	1.8
Renfrew Co.	1.9	2.1	1.9	2.3	2.1	2.0	2.5	2.8	2.4	2.0
Simcoe Co.	11.6	13.4	11.4	13.0	11.9	12.2	13.4	16.3	15.2	15.6
Stormont, Dundas & Glengarry Co.'s	2.8	2.5	2.8	3.0	3.1	3.7	3.4	4.4	3.9	3.7
Sudbury, District of	0.9	0.9	0.6	0.6	0.8	0.6	0.5	0.6	0.6	0.6
Thunder Bay, District of	0.9	0.6	1.5	1.4	1.5	1.1	1.4	1.1	1.7	1.3
Waterloo, R. M. of	7.4	8.7	9.0	8.9	7.9	8.1	8.4	8.7	8.4	9.8
Wellington Co.	6.5	7.1	7.1	8.4	7.7	7.4	7.7	8.1	7.7	6.5
York, R. M. of	0.6	1.1	1.3	0.7	0.5	0.6	0.6	0.6	0.6	0.7
<b>TOTAL</b>	<b>142.9</b>	<b>148.8</b>	<b>143.6</b>	<b>152.6</b>	<b>150.1</b>	<b>151.9</b>	<b>158.1</b>	<b>167.1</b>	<b>162.8</b>	<b>156.4</b>

Note: Totals may not equal due to rounding.

Table 4

**LICENCE PRODUCTION IN 2023  
TOP TEN PRODUCING MUNICIPALITIES  
(Rounded to nearest million tonnes)**

Municipality(1)	County/Region	2023 Production	Production(2)				
			2022	2021	2020	2019	2018
1 City of Ottawa	City of Ottawa	9.7	12.1	13.4	12.7	11.1	10.3
2 City of Hamilton	City of Hamilton	8.7	7.9	6.7	6.8	6.9	6.0
3 Township of North Dumfries	Waterloo	7.7	5.7	5.9	5.7	5.1	5.2
4 City of Kawartha Lakes	City of Kawartha Lakes	6.3	6.2	6.4	6.4	7.0	7.2
5 Severn Township	Simcoe	5.8	5.3	5.5	4.6	3.7	3.6
6 Township of Zorra	Oxford	5.5	5.0	5.4	4.6	5.0	4.7
7 Municipality of Clarington	Durham	4.0	4.1	4.2	4.4	4.2	4.4
8 City of Burlington/ Town Of Halton Hills (3)	Halton	3.8	4.4	4.4	5.3	5.1	5.2
9 Township of Ramara	Simcoe	3.5	3.3	3.5	3.0	2.9	2.7
10 Town of Caledon	Peel	3.4	3.4	3.4	3.1	2.8	2.6
<b>Total</b>		<b>58.3</b>	<b>57.4</b>	<b>58.8</b>	<b>56.6</b>	<b>53.8</b>	<b>51.9</b>

Notes:

1. Municipalities are ranked in order of their licenced production for 2023.
2. Historical data are for current year's Top Ten Producing Municipalities.
3. City of Burlington/Town Of Halton Hills combined due to lower tier grouping guidelines.

Table 5

**NUMBER AND TYPE OF AGGREGATE LICENCES IN 2023  
(Reported by MNR District)**

District	No. of Licences	Category		Type of Operation			
		Class A	Class B	Pit	Quarry	Pit & Quarry	Underwater
Aurora (GTA)	125	111	14	107	18	0	0
Aylmer	266	210	56	254	8	4	0
Bancroft	260	104	156	182	38	40	0
Guelph (Cambridge)	440	388	52	399	37	4	0
Kemptville	457	299	158	300	131	26	0
Midhurst	486	384	102	416	65	5	0
North Bay	141	63	78	104	9	28	0
Parry Sound	278	117	161	174	11	93	0
Pembroke	206	76	130	182	12	12	0
Peterborough (Tweed)	498	284	214	400	81	17	0
Sault Ste. Marie	98	57	41	78	7	13	0
Sudbury	213	129	84	145	22	46	0
Thunder Bay	95	53	42	70	8	17	0
Wawa	2	2	0	1	0	1	0
<b>TOTAL</b>	<b>3,565</b>	<b>2,277</b>	<b>1,288</b>	<b>2,812</b>	<b>447</b>	<b>306</b>	<b>0</b>

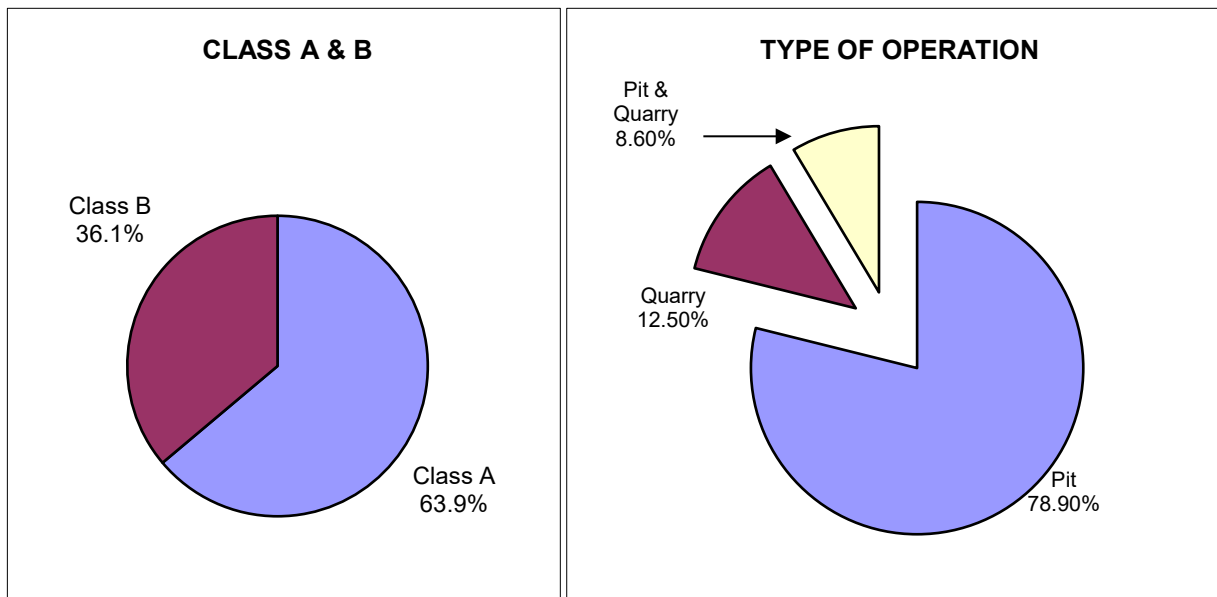




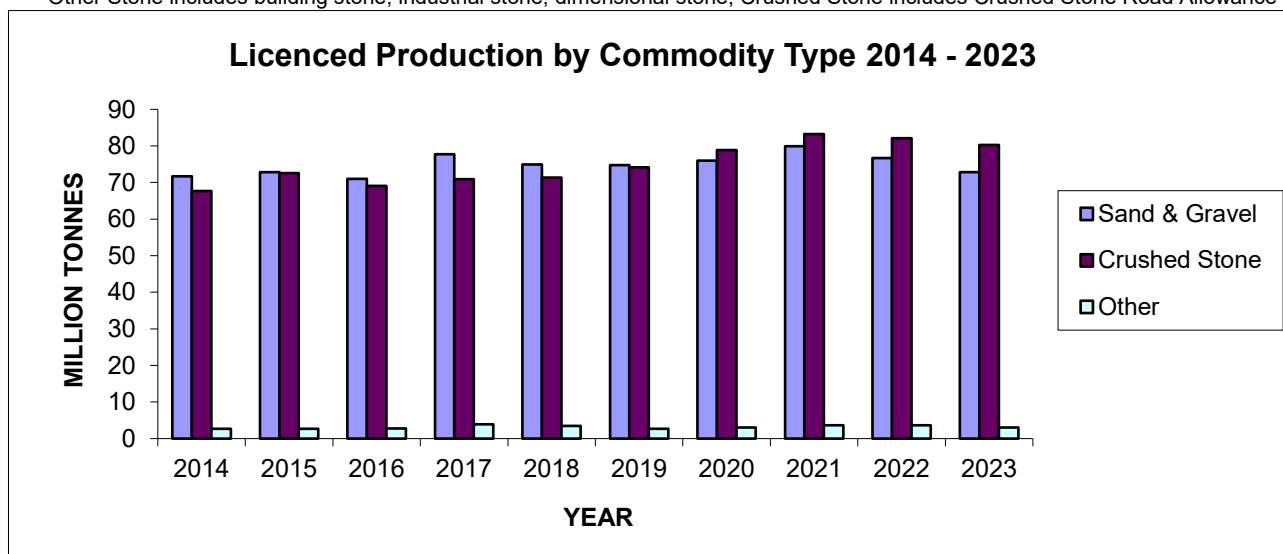
Table 6

**2023 LICENCED AGGREGATE PRODUCTION  
BY COMMODITY TYPE  
(Reported by MNR District)**

District	Total	Sand & Gravel	Crushed Stone	Clay/ Shale	Other Stone
Aurora (GTA)	16,207,805.88	9,253,520.95	6,453,693.00	500,308.34	283.59
Aylmer	15,739,321.75	10,071,197.98	5,622,438.51	26,216.26	19,469.00
Bancroft	5,065,944.36	783,530.47	4,040,270.09	1,162.00	240,981.80
Guelph (Cambridge)	40,685,220.43	24,431,509.14	16,026,422.59	220,545.00	6,743.70
Kemptville	18,676,274.05	2,727,099.17	14,314,024.75	55,385.60	1,579,764.53
Midhurst	24,126,931.32	11,088,023.03	12,891,630.27	23,712.04	123,565.98
North Bay	1,454,278.99	861,626.03	558,219.81	0.00	34,433.15
Parry Sound	4,006,812.09	1,321,548.04	2,614,077.92	303.51	70,882.62
Pembroke	2,110,173.42	1,092,467.99	1,015,319.43	450.00	1,936.00
Peterborough	17,328,739.27	6,804,036.36	10,379,703.34	12,974.00	132,025.57
Sault Ste. Marie	3,289,365.61	1,317,739.01	1,971,568.12	58.48	0.00
Sudbury	6,199,123.35	1,989,973.82	4,195,111.53	129.00	13,909.00
Thunder Bay	1,278,634.82	1,116,741.91	161,852.97	0.00	39.94
Wawa	1,214.00	0.00	1,214.00	0.00	0.00
<b>TOTAL</b>	<b>156,169,839.34</b>	<b>72,859,013.90</b>	<b>80,245,546.33</b>	<b>841,244.23</b>	<b>2,224,034.88</b>

Note: Totals may not equal due to rounding - Reported in metric tonnes

Other Stone includes building stone, industrial stone, dimensional stone; Crushed Stone includes Crushed Stone Road Allowance



**Yearly Production for Aggregate Licences  
(in Million Tonnes)**

	Total	Sand & Gravel	Crushed Stone	Other
2014	142.02	71.68	67.67	2.67
2015	148.06	72.83	72.55	2.68
2016	142.86	71.01	69.10	2.75
2017	152.60	77.76	70.90	3.94
2018	149.74	74.92	71.37	3.45
2019	151.52	74.73	74.12	2.67
2020	157.91	75.97	78.90	3.04
2021	166.77	79.92	83.20	3.65
2022	162.52	76.72	82.13	3.67
2023	156.17	72.86	80.24	3.07

Table 7

**2023 AGGREGATE PERMIT PRODUCTION  
BY COMMODITY TYPE  
(Reported by MNR District)**

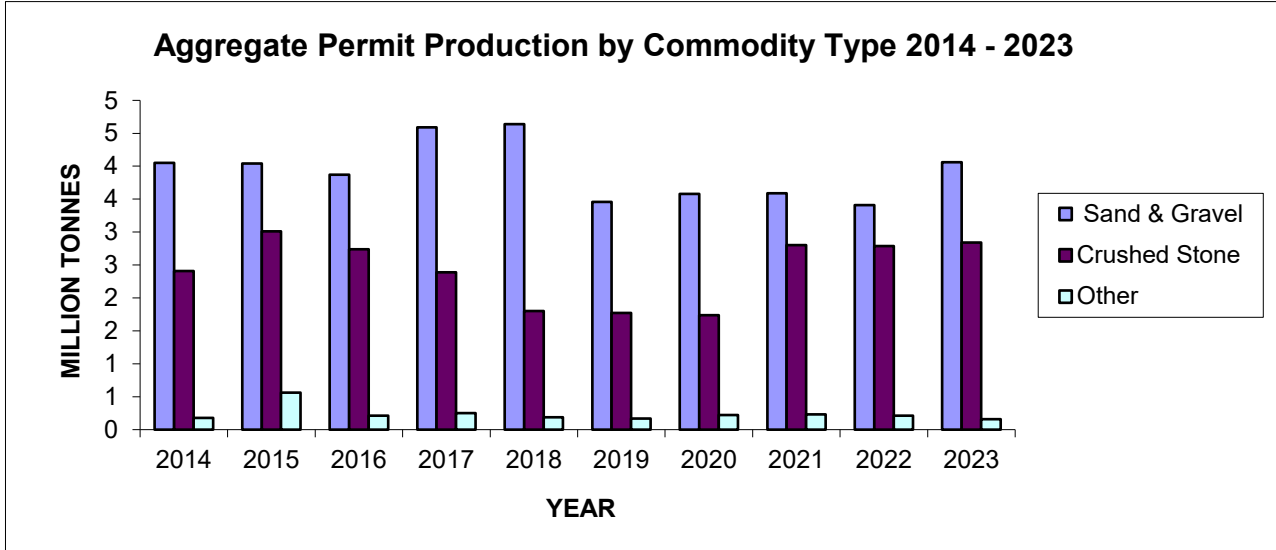
<b>Region/District</b>	<b>Total Production</b>	<b>Sand &amp; Gravel</b>	<b>Crushed Stone</b>	<b>Clay/Shale</b>	<b>Other Stone</b>
<b>NORTHEAST</b>					
Chapleau	80,922.40	80,922.40	-	-	-
Cochrane	192,454.40	46,350.40	146,104.00	-	-
Hearst	324,148.68	241,055.08	83,093.60	-	-
Kirkland Lake	105,026.66	105,026.66	-	-	-
North Bay	367,855.91	151,456.31	213,544.38	-	2,855.22
Sault Ste. Marie	61,056.40	51,133.40	4,817.00	5,106.00	-
Sudbury	310,727.10	200,967.08	109,209.62	310.40	240.00
Timmins	1,002,261.21	1,002,261.21	-	-	-
Wawa	271,621.94	171,813.74	99,808.20	-	-
<b>Sub-Total</b>	<b>2,716,074.70</b>	<b>2,050,986.28</b>	<b>656,576.80</b>	<b>5,416.40</b>	<b>3,095.22</b>
<b>NORTHWEST</b>					
Dryden	500,224.20	134,142.20	364,844.00	-	1,238.00
Fort Frances	242,473.89	237,076.89	5,397.00	-	-
Kenora	476,510.08	205,217.20	244,372.10	-	26,920.78
Nipigon	1,533,434.80	931,449.12	601,815.68	-	170.00
Red Lake	190,994.47	189,742.69	911.90	-	339.88
Sioux Lookout	113,309.16	108,561.16	4,748.00	-	-
Thunder Bay	687,375.26	112,602.76	574,711.00	-	61.50
<b>Sub-Total</b>	<b>3,744,321.86</b>	<b>1,918,792.02</b>	<b>1,796,799.68</b>	<b>-</b>	<b>28,730.16</b>
<b>SOUTHCENTRAL</b>					
Algonquin Park	-	-	-	-	-
Aurora (GTA)	-	-	-	-	-
Aylmer	3,886.00	3,886.00	-	-	-
Bancroft	407,001.70	28,687.28	264,227.69	-	114,086.73
Guelph (Cambridge)	-	-	-	-	-
Kemptville	807.84	807.84	-	-	-
Midhurst	-	-	-	-	-
Parry Sound	102,866.57	35,513.57	67,353.00	-	-
Pembroke	25,902.88	23,952.88	1,950.00	-	-
Peterborough (Tweed)	57,074.20	-	57,074.20	-	-
<b>Sub-Total</b>	<b>597,539.19</b>	<b>92,847.57</b>	<b>390,604.89</b>	<b>0.00</b>	<b>114,086.73</b>
<b>TOTAL</b>	<b>7,057,935.75</b>	<b>4,062,625.87</b>	<b>2,843,981.37</b>	<b>5,416.40</b>	<b>145,912.11</b>

Note: Totals may not equal due to rounding - Reported in metric tonnes

Other Stone includes building stone, industrial stone, dimensional stone

Table 8

**2023 AGGREGATE PERMIT PRODUCTION  
BY COMMODITY TYPE  
(Reported By Year)**



**Yearly Production for Aggregate Permits  
(in Million Tonnes)**

	Total	Sand & Gravel	Crushed Stone	Other
2014	6.64	4.05	2.41	0.18
2015	7.61	4.04	3.01	0.56
2016	6.82	3.87	2.74	0.21
2017	7.23	4.59	2.39	0.25
2018	6.63	4.64	1.80	0.19
2019	5.40	3.46	1.77	0.17
2020	5.54	3.58	1.74	0.22
2021	6.62	3.59	2.80	0.23
2022	6.41	3.41	2.79	0.21
2023	7.06	4.06	2.84	0.16

Table 9

**2023 AGGREGATE PERMIT PRODUCTION  
BY COMMODITY TYPE  
(Reported by CAC\* Geographic Areas)**

<b>Area</b>	<b>Total</b>	<b>Sand &amp; Gravel</b>	<b>Crushed Stone</b>	<b>Clay/ Shale</b>	<b>Other Stone</b>
Southwest (1)	3,886	3,886	0	0	0
Peninsula (2)	0	0	0	0	0
West Central (3)	0	0	0	0	0
GTA (4)	0	0	0	0	0
East Central (5)	470,756	35,368	321,302	0	114,087
East (6)	27,254	25,304	1,950	0	0
Northeast (7)	2,291,070	1,663,423	624,242	310	3,095
Northwest (8)	4,264,969	2,334,645	1,896,488	5,106	28,730
<b>TOTAL</b>	<b>7,057,936</b>	<b>4,062,626</b>	<b>2,843,981</b>	<b>5,416</b>	<b>145,912</b>

Note: Totals may not equal due to rounding - Reported in metric tonnes

Other Stone includes building stone, industrial stone, dimensional stone; Crushed Stone includes Crushed Stone Road Allowance

\*CAC - Cement Association of Canada formerly CPCA - Canadian Portland Cement Association

**2023 AGGREGATE LICENCE PRODUCTION  
BY COMMODITY TYPE  
(Reported by CAC\* Geographic Areas)**

<b>Area</b>	<b>Total</b>	<b>Sand &amp; Gravel</b>	<b>Crushed Stone</b>	<b>Clay/ Shale</b>	<b>Other Stone</b>
Southwest (1)	21,342,031	14,578,090	6,625,117	119,355	19,469
Peninsula (2)	18,657,751	3,863,755	14,666,590	127,406	0
West Central (3)	40,551,691	27,148,885	13,248,785	23,712	130,310
GTA (4)	16,209,916	9,255,631	6,453,693	500,308	284
East Central (5)	21,583,811	7,891,201	13,267,565	13,877	411,169
East (6)	25,484,798	4,422,351	19,415,380	56,399	1,590,668
Northeast (7)	8,764,691	3,263,924	5,428,542	129	72,096
Northwest (8)	4,573,329	2,435,177	2,138,053	58	40
<b>TOTAL</b>	<b>157,168,017</b>	<b>72,859,014</b>	<b>81,243,724</b>	<b>841,244</b>	<b>2,224,035</b>

Note: Totals may not equal due to rounding - Reported in metric tonnes

Other Stone includes building stone, industrial stone, dimensional stone; Crushed Stone includes Crushed Stone Road Allowance

\*CAC - Cement Association of Canada formerly CPCA - Canadian Portland Cement Association

Table 10

**REHABILITATION OF  
LICENCED AGGREGATE SITES IN 2023  
(Reported by MNR District)**

District	Total No. of Licences	Total Licenced Area	Original Disturbed Area	New Disturbed Area	New Rehab. Area	Total Disturbed Area
Aurora (GTA)	125	7,896.14	2,392.47	35.00	43.51	2,383.96
Aylmer	266	8,161.88	2,759.13	134.65	61.32	2,832.45
Bancroft	260	9,621.44	1,568.09	50.65	21.23	1,597.51
Guelph (Cambridge)	440	16,484.88	5,346.26	247.84	160.07	5,434.03
Kemptville	457	14,363.78	4,877.18	72.71	43.72	4,906.18
Midhurst	486	16,478.99	4,808.10	247.64	72.91	4,982.83
North Bay	141	6,531.51	1,000.98	32.53	15.80	1,017.71
Parry Sound	278	9,262.09	1,999.36	45.02	15.01	2,029.37
Pembroke	206	5,510.40	1,144.67	31.88	12.25	1,164.30
Peterborough (Tweed)	498	14,979.12	4,311.01	67.38	60.61	4,317.78
Sault Ste. Marie	98	3,846.43	821.29	9.22	22.85	807.66
Sudbury	213	15,838.12	1,818.07	37.26	23.78	1,831.55
Thunder Bay	95	7,032.62	593.29	46.83	31.59	608.53
Wawa	2	46.87	0.25	0.00	0.00	0.25
<b>TOTAL</b>	<b>3,565</b>	<b>136,054.27</b>	<b>33,440.15</b>	<b>1,058.63</b>	<b>584.65</b>	<b>33,914.12</b>

Note: Areas reported in hectares

These statistics are compiled from information supplied by licencees and are not independently audited by TOARC.

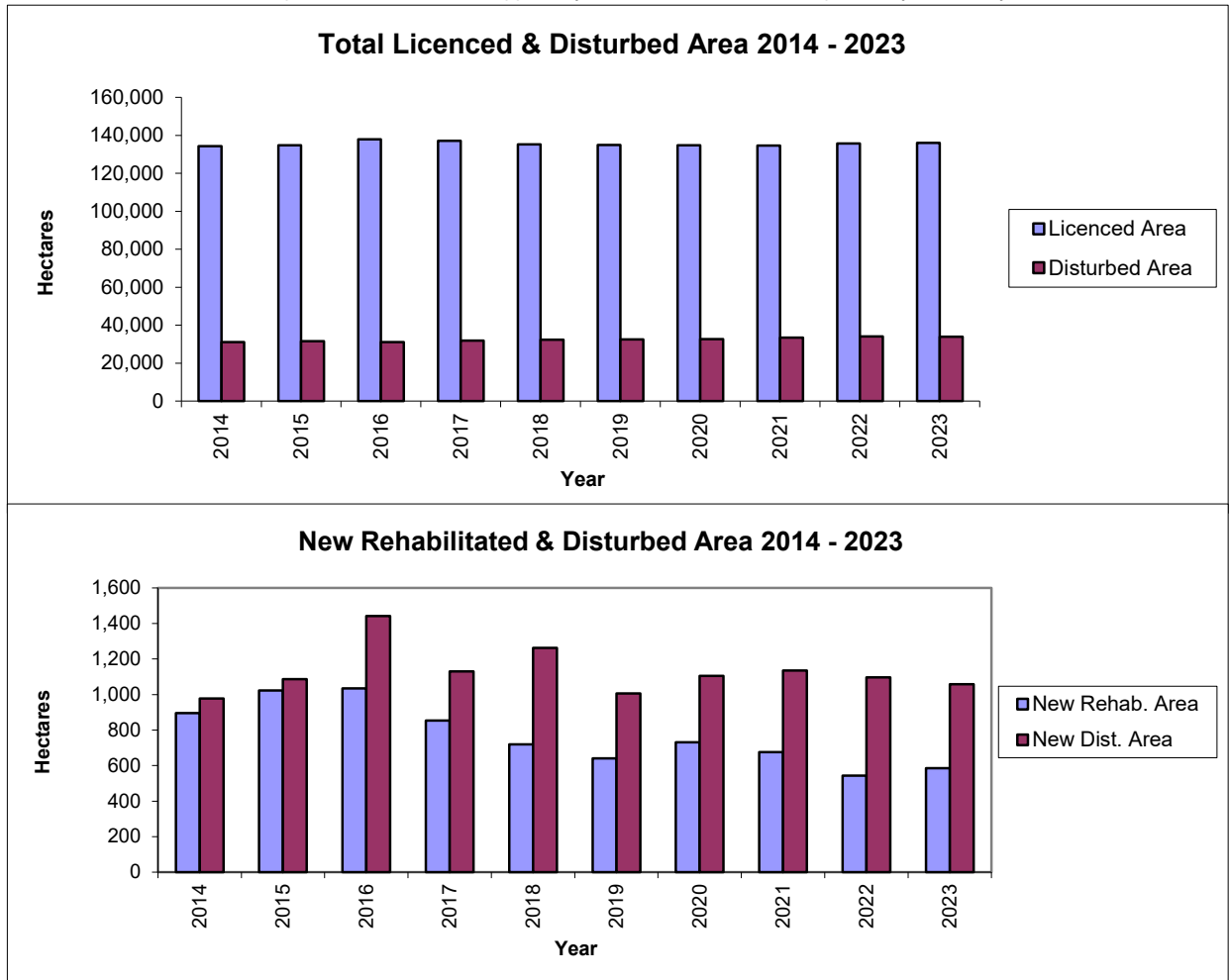


Table 11

**NUMBER AND TYPE OF AGGREGATE PERMITS IN 2023  
(Reported by MNR District)**

<b>Region/District</b>	<b>Total Hectarage</b>	<b>Total No. of Permits</b>	<b>Pit</b>	<b>Quarry</b>	<b>Pit &amp; Quarry</b>	<b>Underwater</b>
<b>NORTHEAST</b>						
Chapleau	1,180.99	61	58	3	0	0
Cochrane	3,495.43	107	89	11	7	0
Hearst	3,458.49	169	145	22	2	0
Kirkland Lake	2,734.21	141	128	9	4	0
North Bay	3,453.12	187	140	33	14	0
Sault Ste. Marie	1,073.69	80	74	4	2	0
Sudbury	5,145.26	155	114	23	18	0
Timmins	1,880.72	110	99	6	5	0
Wawa	2,507.21	162	143	11	8	0
<b>Sub-Total</b>	<b>24,929.12</b>	<b>1,172</b>	<b>990</b>	<b>122</b>	<b>60</b>	<b>0</b>
<b>NORTHWEST</b>						
Dryden	2,471.68	165	144	10	11	0
Fort Frances	2,570.24	207	181	8	18	0
Kenora	3,228.24	178	125	23	30	0
Nipigon	3,558.47	200	161	18	21	0
Red Lake	1,247.94	67	59	5	3	0
Sioux Lookout	2,629.73	88	82	2	4	0
Thunder Bay	4,912.05	164	117	32	15	0
<b>Sub-Total</b>	<b>20,618.35</b>	<b>1,069</b>	<b>869</b>	<b>98</b>	<b>102</b>	<b>0</b>
<b>SOUTHCENTRAL</b>						
Aylmer	0.10	1	0	0	0	1
Bancroft	1,381.13	67	51	16	0	0
Guelph (Cambridge)	0.00	0	0	0	0	0
Kemptville	2.00	1	1	0	0	0
Parry Sound	901.15	84	56	19	9	0
Pembroke	137.26	32	31	1	0	0
Peterborough (Tweed)	38.55	3	0	2	1	0
<b>Sub-Total</b>	<b>2,460.19</b>	<b>188</b>	<b>139</b>	<b>38</b>	<b>10</b>	<b>1</b>
<b>TOTAL</b>	<b>48,007.66</b>	<b>2,429</b>	<b>1,998</b>	<b>258</b>	<b>172</b>	<b>1</b>

## APPENDIX A

### GLOSSARY OF TERMS

For actual definitions, please refer to the Aggregate Resources Act.

#### Active Licence

A licence that has been issued, being transferred, or under suspension at the end of the calendar year.

#### Aggregate

Includes sand, gravel, limestone, dolostone, crushed stone, rock other than metallic ores, and other prescribed material.

#### Aggregate Permit

A permit for a pit or quarry issued under the Aggregate Resources Act allowing for the excavation of aggregate that is the property of the Crown, on land where the surface rights are the property of the Crown, or from land under water.

#### ALPS

The MNR Aggregate Licence and Permit System (ALPS) is an automated data base that facilitates the management of mineral aggregate production and related information, for individual licences, aggregate permits and wayside permits across the province.

#### Building Dimension

A slab or block of rock, flagstone if foliated and dimension stone if massive, generally rectangular, and cut to specified measurements for ornamental surfacing in buildings or other construction applications.

#### Clay/Shale

Clay is a fine-grained, natural, earthy material composed primarily of hydrous aluminum silicates. It is plastic when moist and hardens when dried. Shale is fine-grained sedimentary laminated rock predominantly composed of clay grade and other fine minerals.

#### Class A Licence

A licence under the Aggregate Resources Act to allow excavation of more than 20,000 tonnes of aggregate annually from a pit or quarry within parts of Ontario that have been designated under the Aggregate Resources Act.

#### Class B Licence

A licence under the Aggregate Resources Act to allow excavation of 20,000 tonnes or less of aggregate annually from a pit or quarry within parts of Ontario that have been designated under the Aggregate Resources Act.

#### Crown Land

Ownership of land which is vested in the Crown or owned by the Province of Ontario.

#### Crushed Stone

Rock or stone mechanically crushed to specified sizes and grading.

#### Designated Area

An area of the Province identified by regulation under the Aggregate Resources Act where a person requires a licence for the excavation of aggregate from private land.

### Disturbed Area

An area within a site that has been, or is being excavated to operate a pit or quarry, and has not been rehabilitated.

### Gravel

Small stones and pebbles or a mixture of sand and small stones. More specifically, fragments of rock worn by the action of air and water, larger and coarser than sand. MTO specifications define gravel as unconsolidated granular material greater than 4.75mm.

### Housing Starts

The number of housing units started where construction has advanced to 100 per cent of footings. In case of multiple dwellings, a "start" implies the commencement of individual structures.

### Inactive Licence

A licence that has been revoked or surrendered prior to the end of the calendar year.

### Licence

A licence for a pit or quarry issued under the Aggregate Resources Act allowing for the extraction of aggregate in designated areas.

### Licensed Area

A specific area for which a licence has been issued for the extraction of mineral aggregates under the Aggregate Resources Act.

### Pit

Land or land under water from which unconsolidated aggregate is being or has been excavated, and has not been rehabilitated.

### Private Land

Land owned by an individual or corporation, as opposed to land which is owned by the Crown.

### Progressive Rehabilitation

As per the requirements of the Aggregate Resources Act, sequential rehabilitation completed within reasonable time over disturbed land from which aggregate has been extracted. The rehabilitation is carried out according to the Act, the regulations, the site plan, and the conditions of the licence or permit during the period that aggregate is being extracted.

### Pits & Quarries Control Act

An Act to manage and regulate mineral aggregate extraction in Ontario. The Act had been automatically repealed and replaced by the Aggregate Resources Act as of January 1, 1990.

### Quarry

Land or land under water from which consolidated rock is or has been excavated and the site has not been rehabilitated.

### Rehabilitation

To treat the land from which aggregate has been excavated to a pre-excitation condition or use, or to a condition compatible with adjacent land.

### Royalty

A payment made to the Crown in recognition of the extraction of aggregates owned by the Crown. Under the Aggregate Resources Act, the royalty is set at a minimum of 53.9 cents per tonne. The Minister may set a higher rate or may allow exemption.



### Sand

Any hard granular rock material finer than gravel and coarser than dust. MTO specifications define sand as granular material ranging in size from .075mm to 4.75 mm.

### Wayside Permit

A permit issued to a public authority or a person who has a contract with a public authority for a temporary road project or an urgent project for which no alternative source of aggregate is available under licence or permit. A wayside permit expires 18 months from the date of issue or upon completion of the project, whichever comes first.

**APPENDIX B**

**HISTORICAL DESIGNATION OF PRIVATE LAND UNDER THE  
PITS AND QUARRIES CONTROL ACT AND  
THE AGGREGATE RESOURCES ACT**

(by Geographic Twp)

**Designations under the Pits and Quarries Control Act (1971-1989)**

**DECEMBER 19, 1971**

Adjala	Euphrasia	Nottawasaga
Albemarle	Flamborough East	Osprey
Albion	Flamborough West	Pelham
Amabel	Grantham	Reach
Ancaster	Grimsby North	Saltfleet
Artemesia	Holland	Stamford
Barton	Keppel	St. Edmunds
Beverly	Lindsay	St. Vincent
Caledon	London	Sydenham
Chinguacousy	Louth	Thorold
Clinton	Melancthon	Toronto Gore
Collingwood	Mono	Trafalgar
Derby	Mulmur	Westminster
Eastnor	Nassagaweya	West Nissouri
Erin	Nelson	Whitby
Esquesing	Niagara	Whitchurch

**MARCH 3, 1972**

Brock	Lobo	Pickering
East Whitby	Markham	Toronto
Gloucester	Nepean	Vaughan
Hallowell	Osgoode	

**MAY 9, 1972**

Brantford	Pittsburgh	South Dumfries
Guelph	Puslinch	Waterloo
Kingston	North Dumfries	

**AUGUST 15, 1973**

Anderdon	Dereham	Humberstone
Bertie	Dunn	Huntley
Blenheim	Eramosa	King
Brighton	Fitzroy	Malden
Clarke	Gosfield South	Manvers
Colchester North	Gosfield North	March
Colchester South	Haldimand	Mersea
Cramahe	Hamilton	Murray
Crowland	Harwich	Nichol
Darlington	Hope	North Cayuga

North Gower  
North Oxford  
Oneida  
Orillia  
Oro  
Pilkington  
Raleigh  
Romney

Sidney  
Sunnidale  
Thurlow  
Tilbury East  
Tyendinaga  
Uxbridge  
Vespra  
Walpole

Wellesley  
West Oxford  
Willoughby  
Wilmot  
Woodhouse  
Woolwich  
Yarmouth

**FEBRUARY 15, 1974**

Delaware  
North Dorchester

**MAY 17, 1974**

Pelee

**MAY 1, 1975**

Alnwick  
Amaranth  
Arran  
Arthur  
Asphodel  
Balfour  
Bayham  
Belmont  
Bexley  
Biddulph  
Binbrook  
Blandford  
Blanshard  
Blezard  
Bowell  
Broder  
Burford  
Caistor  
Camden  
Capreol  
Cartwright  
Cavan  
Charlotteville  
Chatham  
Creighton  
Cumberland  
Denison  
Dieppe  
Dill  
Douro  
Dover  
Dowling  
Drury

Dryden  
Dummer  
East York  
East Garafraxa  
East Nissouri  
East Luther  
East Gwillimbury  
East Oxford  
East Zorra  
Eldon  
Emily  
Ennismore  
Essa  
Etobicoke  
Fairbank  
Falconbridge  
Fenelon  
Flos  
Gainsborough  
Garson  
Georgina  
Glanford  
Glenelg  
Goulburn  
Graham  
Hanmer  
Harvey  
Houghton  
Howard  
Hutton  
Innisfil  
Levack  
Lorne

Louise  
Lumsden  
MacLennan  
Maidstone  
Malahide  
Mara  
Mariposa  
Marlborough  
Maryborough  
Matchedash  
McKim  
Medonte  
Middleton  
Minto  
Morgan  
Moulton  
Neelon  
Norman  
North Monaghan  
North Walsingham  
North Norwich  
North Gwillimbury  
North York  
Oakland  
Onondaga  
Ops  
Orford  
Otonabee  
Peel  
Percy  
Proton  
Rainham  
Rama

Rawden  
Rayside  
Rochester  
Sandwich, East  
Sandwich, West  
Scarborough  
Scott  
Scugog  
Seneca  
Seymour  
Sherbrooke  
Smith  
Snider  
South Walsingham

South Cayuga  
South Dorchester  
South Grimsby  
South Norwich  
South Monaghan  
Sullivan  
Tay  
Tecumseh  
Thorah  
Tilbury, North  
Tilbury, West  
Tiny  
Torbolton  
Tosorontio

Townsend  
Trill  
Tuscarora  
Verulam  
Wainfleet  
Waters  
West Luther  
West Garafraxa  
West Gwillimbury  
West Zorra  
Windham  
Wisner  
York  
Zone

#### **APRIL 6, 1976**

Great LaCloche Island  
Little LaCloche Island

#### **AUGUST 27, 1976**

Avenge  
Bosanquet  
Carden

Korah  
Parke  
Prince

Rankin  
St. Mary's  
Tarentorus

#### **JANUARY 1, 1981**

Adelaide  
Aldborough  
All of the County of Perth  
All of the County of Huron  
All of the County of Lanark  
Ameliasburgh  
Athol  
Bentinck  
Brant  
Brooke  
Bruce  
Carrick  
City of Belleville  
Culross  
Dawn  
Dunwich  
E. Williams  
Egremont  
Elderslie  
Elzevir and Grimsthorpe

Enniskillen  
Euphemia  
Exfrid  
Greenock  
Hillier  
Hungerford  
Huntingdon  
Huron  
Kincardine  
Kinloss  
Madoc  
Marmora and Lake  
McGillivray  
Moore  
Mosa  
Normanby  
North Marysburgh  
Plympton  
Sarnia  
Saugeen

Separated Town of Trenton  
Sombra  
Sophiasburgh  
South Marysburgh  
Southwold  
Town of Deseronto  
Tudor  
United Counties of Prescott  
and Russell  
United Counties of Stormont,  
Dundas & Glengarry  
United Counties of Leeds and  
Grenville  
Villages of Deloro, Frankford,  
Madoc, Marmora, Stirling  
and Tweed  
W. Williams  
Walford  
Warwich  
Wyoming

#### **JULY 1, 1984**

Storrington

**Designations under the Aggregate Resources Act (Jan. 1, 1990)**

**APRIL 1, 1992**

Adolphustown	Howe Island	Somerville
Amherst Island	Laxton	South Fredericksburgh
Bedford	Longford	Town of Napanee
Camden East	Loughborough	Villages of Bath and
Dalton	North Fredericksburgh	Newburgh
Digby	Portland	Wolfe Island
Ernestown	Richmond	

**SEPTEMBER 1, 1993**

Admaston		Towns of Arnprior and
Alice and Fraser	McNab	Renfrew
Bagot and Blithfield	Pembroke	Villages of Beachburg,
Bromley	Petawawa	Braeside, Cobden and
City of Pembroke	Ross	Petawawa
Horton	Stafford	Westmeath

**JANUARY 1, 1998**

Anderson	Gaudette	Ley
Appleby	Gough	Loughrin
Archibald	Hagar	Macdonald
Aweres	Hallam	May
Awrey	Harrow	McKinnon
Baldwin	Harty	Meredith and Aberdeen
Burwash	Haviland	Additional
Cartier	Hawley	Merritt
Cascaden	Hendrie	Mongowin
Casimir	Henry	Nairn
Chesley Additional	Herrick	Pennefather
Cleland	Hess	Ratter
Cosby	Hilton	Secord
Curtin	Hodgins	Servos
Delamere	Hoskin	Shakespeare
Dennis	Hyman	Shields
Deroche	Jarvis	St. Joseph
Duncan	Jennings	Street
Dunnet	Jocelyn	Tarbutt and Tarbutt
Eden	Johnson	Additional
Fenwick	Kars	Tilley
Fisher	Kehoe	Tilton
Foster	Laird	Tupper
Foy	Laura	VanKoughnet

**DECEMBER 4, 1999**

Village of Hilton Beach

**JULY 22, 2004**

Andre  
Bostwick  
Franchere  
Groseilliers  
Legarde

Levesque  
Macaskill  
Menzies  
Michipicoten  
Musquash

Rabazo  
St. Germain  
Warpula

**Newly Designated Private Lands (Effective January 1, 2007)**

1. Those parts of the County of Frontenac consisting of the townships of Central Frontenac and North Frontenac.
2. Those parts of the County of Renfrew consisting of,
  - a) the Township of Bonnechere Valley, the Township of Brudenell, Lyndoch and Raglan, the Township of Head, Clara and Maria, the Township of Killaloe, Hagarty and Richards, the Township of Madawaska Valley and the Township of North Algona Wilberforce;
  - b) the Township of Greater Madawaska, except the townships of Bagot and Blythfield; and
  - c) the towns of Deep River and Laurentian Hills.
3. Those parts of the County of Lennox and Addington consisting of,
  - a) the Township of Addington Highlands; and
  - b) the Township of Stone Mills, except the Township of Camden East.
4. Those parts of the County of Hastings consisting of,
  - a) the Town of Bancroft;
  - b) the townships of Carlow/Mayo, Faraday, Limerick and Wollaston;
  - c) the Municipality of Hastings Highlands; and
  - d) the Township of Tudor and Cashel, except the Township of Tudor.
5. Those parts of the County of Peterborough consisting of,
  - a) the Township of Galway-Cavendish-Harvey, except the Township of Harvey;
  - b) the Township of Havelock-Belmont-Methuen, except the Township of Belmont and the Town of Havelock; and
  - c) the Township of North Kawartha.
6. All of the County of Haliburton.
7. Those parts of the Territorial District of Nipissing consisting of,
  - a) the Town of Mattawa;
  - b) the City of North Bay;
  - c) the Municipality of West Nipissing;
  - d) the townships of Bonfield, Calvin, Chisholm, East Ferris, Mattawan, Papineau- Cameron and South Algonquin; and
  - e) the geographical townships of Airy, Anglin, Antoine, Ballantyne, Barron, Biggar, Bishop, Blyth, Boulter, Bower, Boyd, Bronson, Butler, Butt, Canisbay, Charlton, Clancy, Clarkson, Commanda, Deacon, Devine, Dickson, Eddy, Edgar, Finlayson, Fitzgerald, French, Freswick, Garrow, Gladman, Guthrie, Hammell, Hunter, Jocko, Lauder, Lyman, Lister, Lockhart, Master, McCraney, McLaughlin, McLaren, Merrick, Mulock, Niven, Notman, Olig, Osborne, Osler, Paxton, Peck, Pentland, Phelps, Poitras, Preston, Sproule, Stewart, Stratton, Thistle, White and Wilkes

8. All parts of the Territorial District of Parry Sound consisting of,
  - a) the townships of Armour, Carling, Joly, Machar, McKellar, McMurrich/Monteith, Nipissing, Perry, Ryerson, Seguin, Strong and The Archipelago;
  - b) the municipalities of Powassan, Magnetawan, McDougall, Callander and Whitestone;
  - c) the towns of Kearney and Parry Sound;
  - d) the villages of Burk's Falls, South River and Sundridge; and
  - e) the geographical townships of Bethune, Blair, Brown, East Mills, Gurd, Hardy, Harrison, Henvey, Laurier, Lount, McConkey, Mowat, Patterson, Pringle, Proudfoot, Shawanaga, Wallbridge and Wilson.
9. All parts of the Territorial District of Muskoka consisting of,
  - a) the towns of Bracebridge, Gravenhurst and Huntsville;
  - b) the townships of Georgian Bay, Lake of Bays and Muskoka Lakes; and
  - c) the District Municipality of Muskoka.
10. Those parts of the Territorial District of Sudbury consisting of,
  - a) the Municipality of French River, except the geographical townships of Cosby, Delamere and Hoskin;
  - b) the Township of Sables – Spanish River, except the geographical townships of Gough, Hallam, Harrow, May, McKinnon and Shakespeare;
  - c) the Town of Killarney;
  - d) the Municipality of Killarney;
  - e) those parts of the City of Greater Sudbury consisting of the geographical townships of Aylmer, Fraleck, Hutton, MacKelcan, Parkin, Rathburn and Scadding; and
  - f) the geographical townships of Bevin, Caen, Carlyle, Cox, Davis, Dunlop, Halifax, Humboldt, Janes, Kelly, Leinster, McCarthy, Munster, Porter, Roosevelt, Shibananing, Truman, Tyrone and Waldie.
11. All parts of the Territorial District of Manitoulin, except Great LaCloche Island and Little LaCloche Island.
12. Those parts of the Territorial District of Algoma consisting of,
  - a) the towns of Blind River, Bruce Mines and Thessalon;
  - b) the City of Elliot Lake;
  - c) the townships of The North Shore, Plummer Additional and Shedden;
  - d) the Municipality of Huron Shores; and
  - e) the geographical townships of Aberdeen, Boon, Bridgland, Brule, Cadeau, Curtis, Dablon, Daumont, Deagle, Gaiashk, Galbraith, Gerow, Gillmor, Grenoble, Hughes, Hurlburt, Hynes, Kane, Kincaid, Lamming, Laverendrye, Marne, McMahan, Montgomery, Morin, Nicolet, Norberg, Palmer, Parkinson, Patton, Peever, Plummer, Rix, Rose, Ryan, Slater, Smilsky, Wells, Whitman and Wishart.
13. Those parts of the Territorial District of Thunder Bay consisting of,
  - a) the City of Thunder Bay;
  - b) the Municipality of Neebing; and
  - c) the townships of Conmee, Dorion, Gillies, O'Conner, Oliver Paipoonge and Shuniah; and
  - d) the geographic townships of Gorham and Ware (designated January 1, 2016)

**Please refer to the Revised Regulations of Ontario for accuracy.**

# CANADIAN PORTLAND CEMENT ASSOCIATION GEOGRAPHIC AREAS

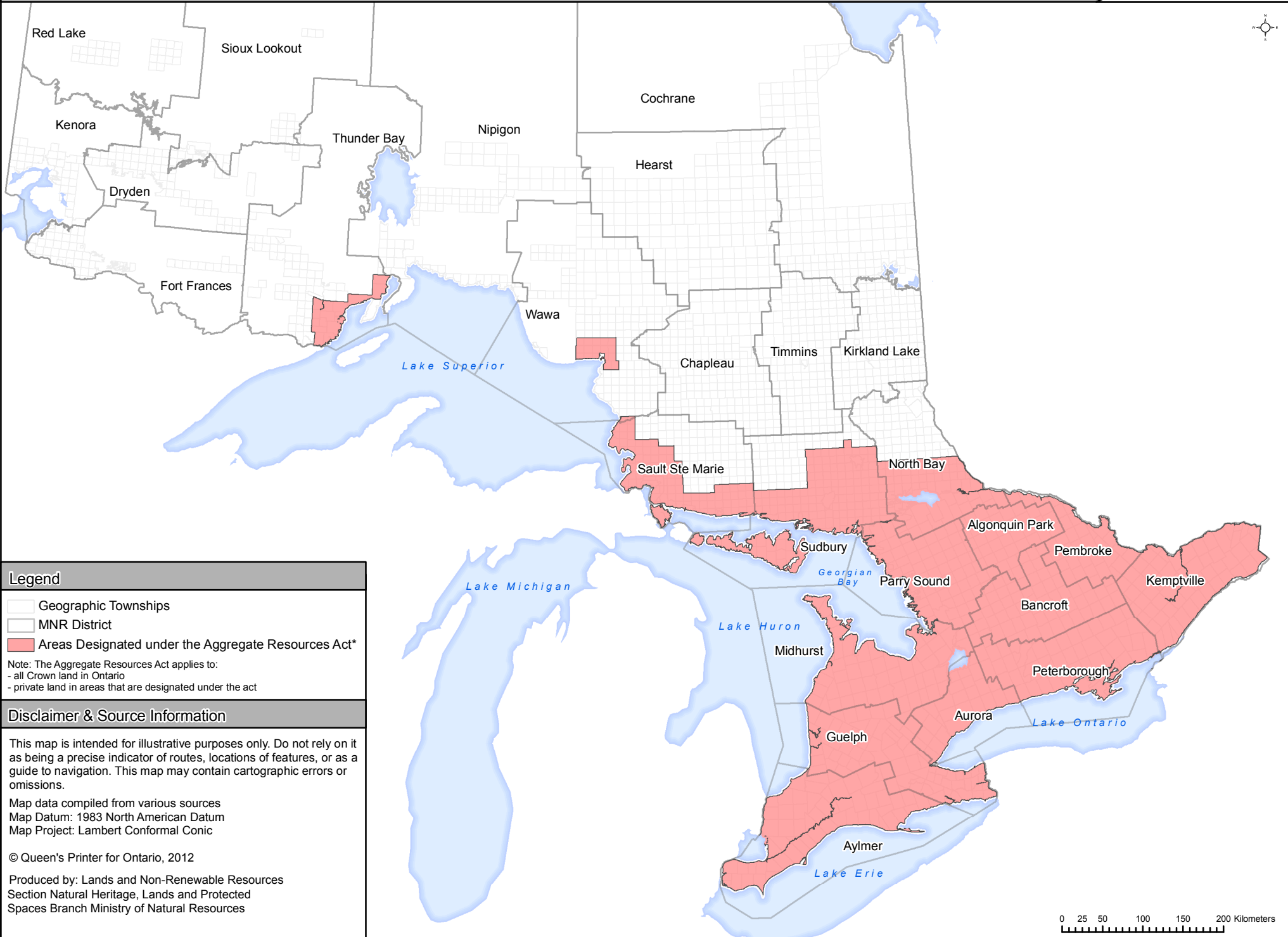
\* Now CAC - Cement Association of Canada



Area 1 Southwest	Area 2 Peninsula	Area 3 West Central	Area 4 GTA	Area 5 East Central	Area 6 East	Area 7 Northeast	Area 8 Northwest
Essex	Niagara	Bruce	Metro Toronto	Kawartha Lakes	Prescott & Russell	Nipissing	Algoma
Chatham-Kent	Brant	Grey	Peel	Peterborough	Leeds & Grenville	Parry Sound	Thunder Bay
Lambton	Haldimand	Simcoe	York	Haliburton	Stormont, Dundas, & Glengarry	Timiskaming	Kenora
Elgin	Norfolk	Dufferin	Durham	Northumberland	Frontenac	Cochrane	Rainy River
Middlesex	Hamilton	Wellington	Halton	Hastings	Greater Ottawa	Sudbury District	
Huron		Waterloo		Prince Edward	Lanark	Greater Sudbury	
Perth				Muskoka	Renfrew	Manitoulin	
Oxford					Lennox & Addington		



# Areas Designated under the Aggregate Resources Act





ONTARIO

Far North District

Northwest

Kenora District

Kenora

Red Lake Sioux Lookout District

Dryden

Dryden Fort Frances Atikokan District

Thunder Bay Ignace District

Thunder Bay

Nipigon Geraldton District

Hearst Cochrane Kapuskasing District

Timmons

Timmons Kirkland Lake District

Temiskaming Shores

North Bay District

North Bay

Sault Ste Marie Blind River District

Sault Ste Marie

Sudbury District

Minden Parry Sound Bracebridge District

Pembroke District

Ottawa

Kingston District

Kingston

Cornwall

Owen Sound

Barrie

Belleville

Toronto

Hamilton

St. Catharines

London

Sarnia

Windsor

# District Boundaries

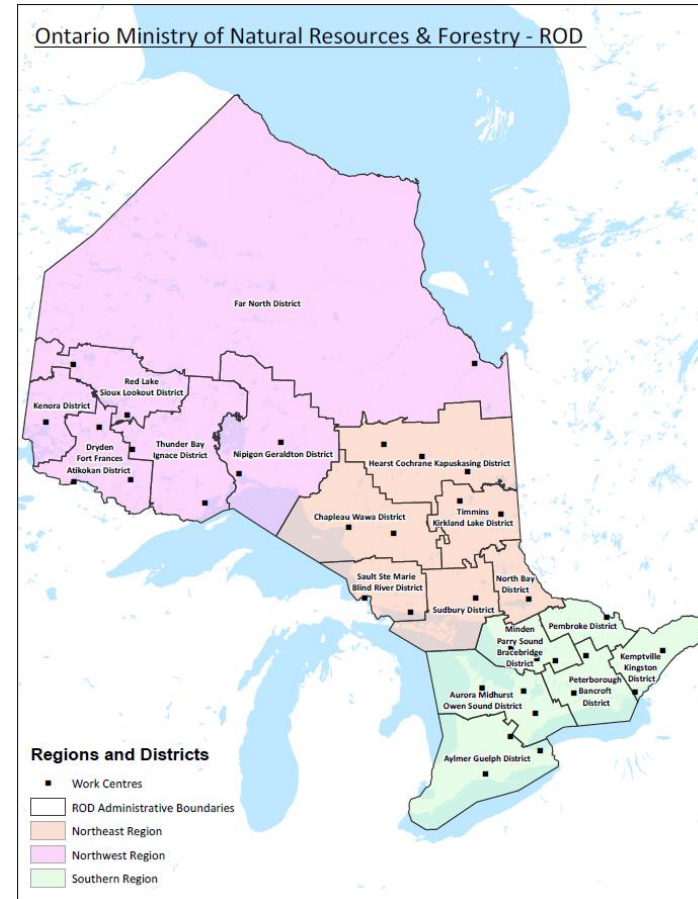
Prior to October 3, 2022

3 Regions, 25 Districts, 36 District, Area & Field Offices



Effective October 3 2022

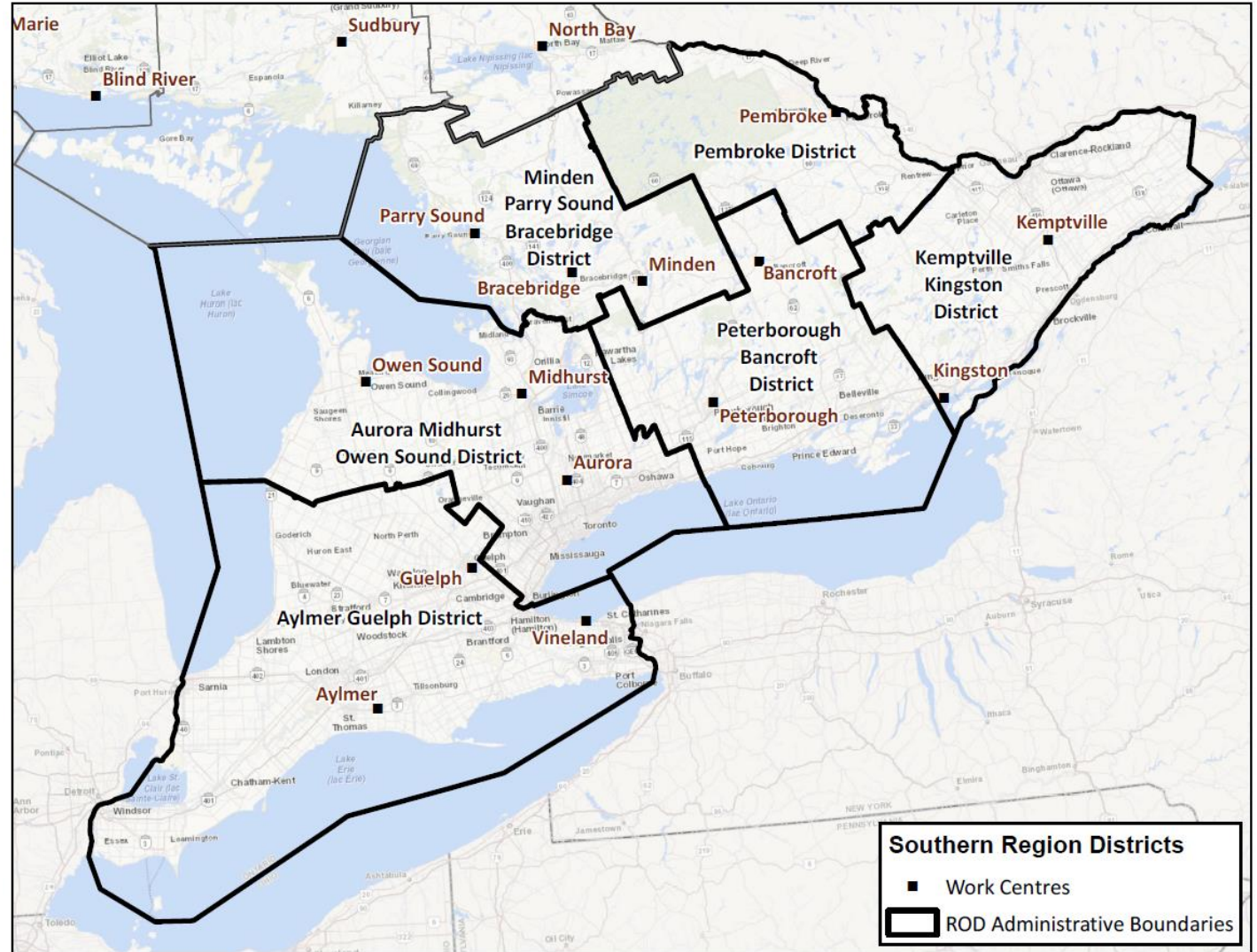
3 Regions, 18 Districts, 36 Work Centres



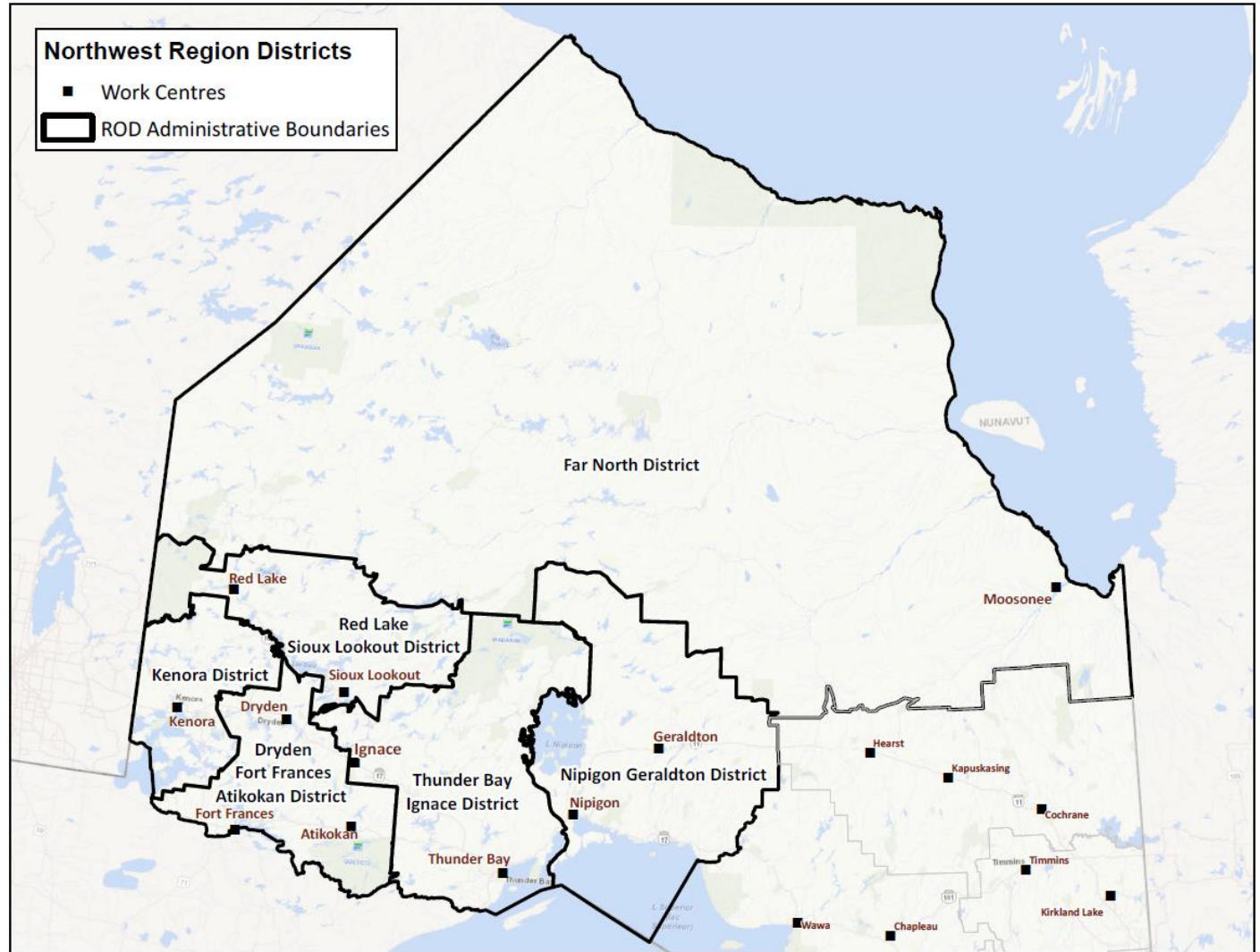
# 18 Districts / 36 Work Centers

Southern Region	Northeast Region	Northwest Region
1. Aurora Midhurst Owen Sound District <ul style="list-style-type: none"> <li>1. Owen Sound Work Centre</li> <li>2. Aurora Work Centre</li> <li>3. Midhurst Work Centre</li> </ul>	1. Hearst Cochrane Kapuskasing District <ul style="list-style-type: none"> <li>- Hearst Work Centre</li> <li>- Kapuskasing Work Centre</li> <li>- Cochrane Work Centre</li> </ul>	1. Dryden Fort Frances Atikokan District <ul style="list-style-type: none"> <li>- Fort Frances Work Centre</li> <li>- Atikokan Work Centre</li> <li>- Dryden Work Centre</li> </ul>
2. Aylmer Guelph District <ul style="list-style-type: none"> <li>1. Aylmer Work Centre</li> <li>2. Guelph (Vineland) Work Centre</li> </ul>	2. Sudbury District <ul style="list-style-type: none"> <li>- Sudbury Work Centre</li> </ul>	2. Red Lake Sioux Lookout District <ul style="list-style-type: none"> <li>- Red Lake Work Centre</li> <li>- Sioux Lookout Work Centre</li> </ul>
3. Minden Parry Sound Bracebridge District <ul style="list-style-type: none"> <li>1. Parry Sound Work Centre</li> <li>2. Bracebridge Work Centre</li> <li>3. Minden Work Centre</li> </ul>	3. Sault Ste. Marie Blind River District <ul style="list-style-type: none"> <li>- SSM Work Centre</li> <li>- Blind River Work Centre</li> </ul>	3. Nipigon Geraldton District <ul style="list-style-type: none"> <li>- Nipigon Work Centre</li> <li>- Geraldton Work Centre</li> </ul>
4. Pembroke District <ul style="list-style-type: none"> <li>- Pembroke Work Centre</li> </ul>	4. Chapleau Wawa District <ul style="list-style-type: none"> <li>- Chapleau Work Centre</li> <li>- Wawa Work Centre</li> </ul>	4. Thunder Bay Ignace District <ul style="list-style-type: none"> <li>- Thunder Bay Work Centre</li> <li>- Ignace Work Centre</li> </ul>
5. Kemptville Kingston District <ul style="list-style-type: none"> <li>- Kemptville Work Centre</li> <li>- Kingston Work Centre</li> </ul>	5. Timmins Kirkland Lake District <ul style="list-style-type: none"> <li>- Kirkland Lake Work Centre</li> <li>- Timmins Work Centre</li> </ul>	5. Kenora District <ul style="list-style-type: none"> <li>- Kenora Work Centre</li> </ul>
6. Peterborough Bancroft District <ul style="list-style-type: none"> <li>- Bancroft Work Centre</li> <li>- Peterborough Work Centre</li> </ul>	6. North Bay District <ul style="list-style-type: none"> <li>- North Bay Work Centre</li> </ul>	6. Far North District <ul style="list-style-type: none"> <li>- Northern parts of previously Red Lake, Sioux Lookout, Nipigon, Hearst and Cochrane Districts</li> <li>- Moosonee Work Centre</li> </ul>

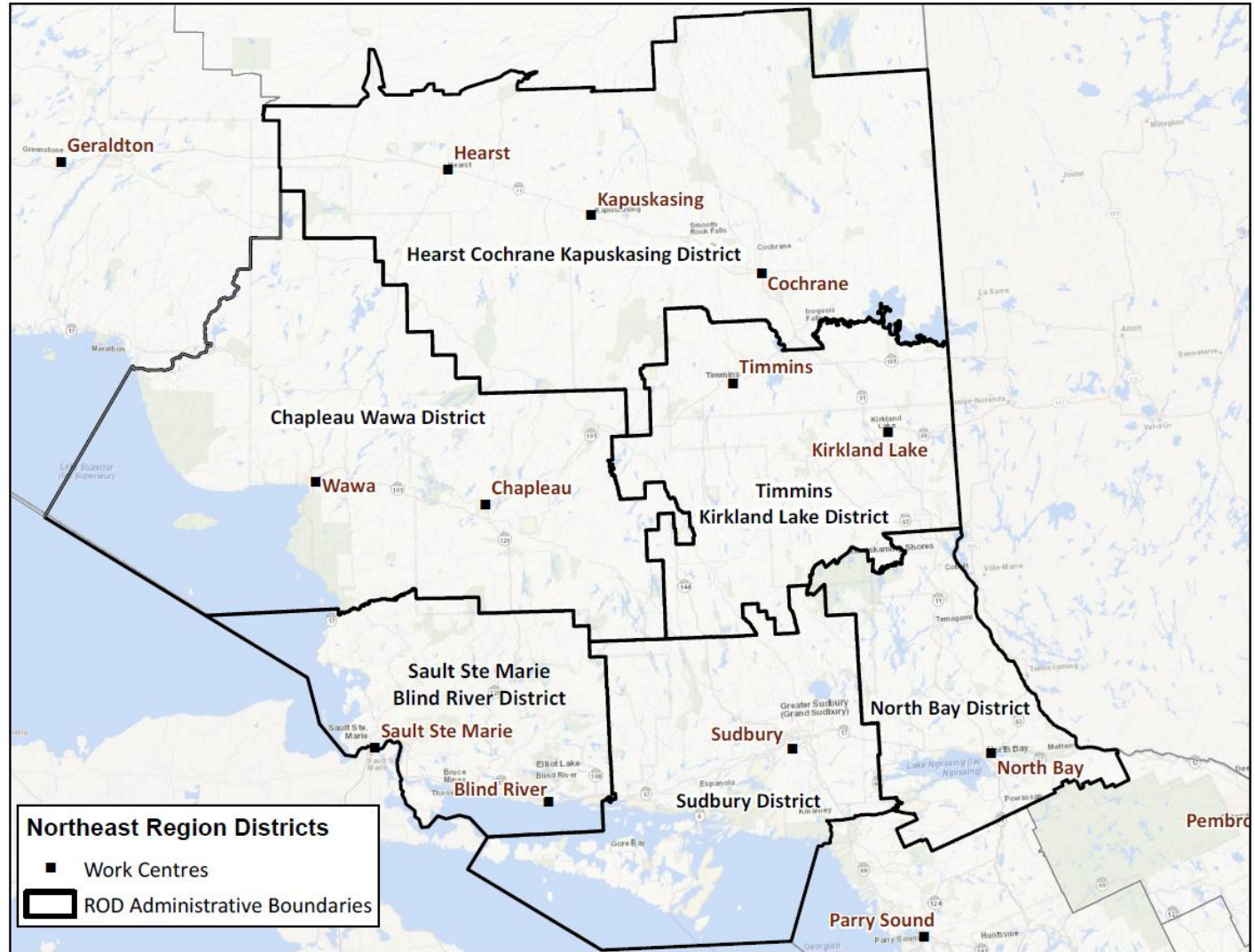
# Southern Region & Districts



# Northwest Region & Districts



# Northeast Region & Districts





**TOARC.COM**

Suite 103, 1001 Champlain Avenue  
Burlington, Ontario L7L 5Z4