

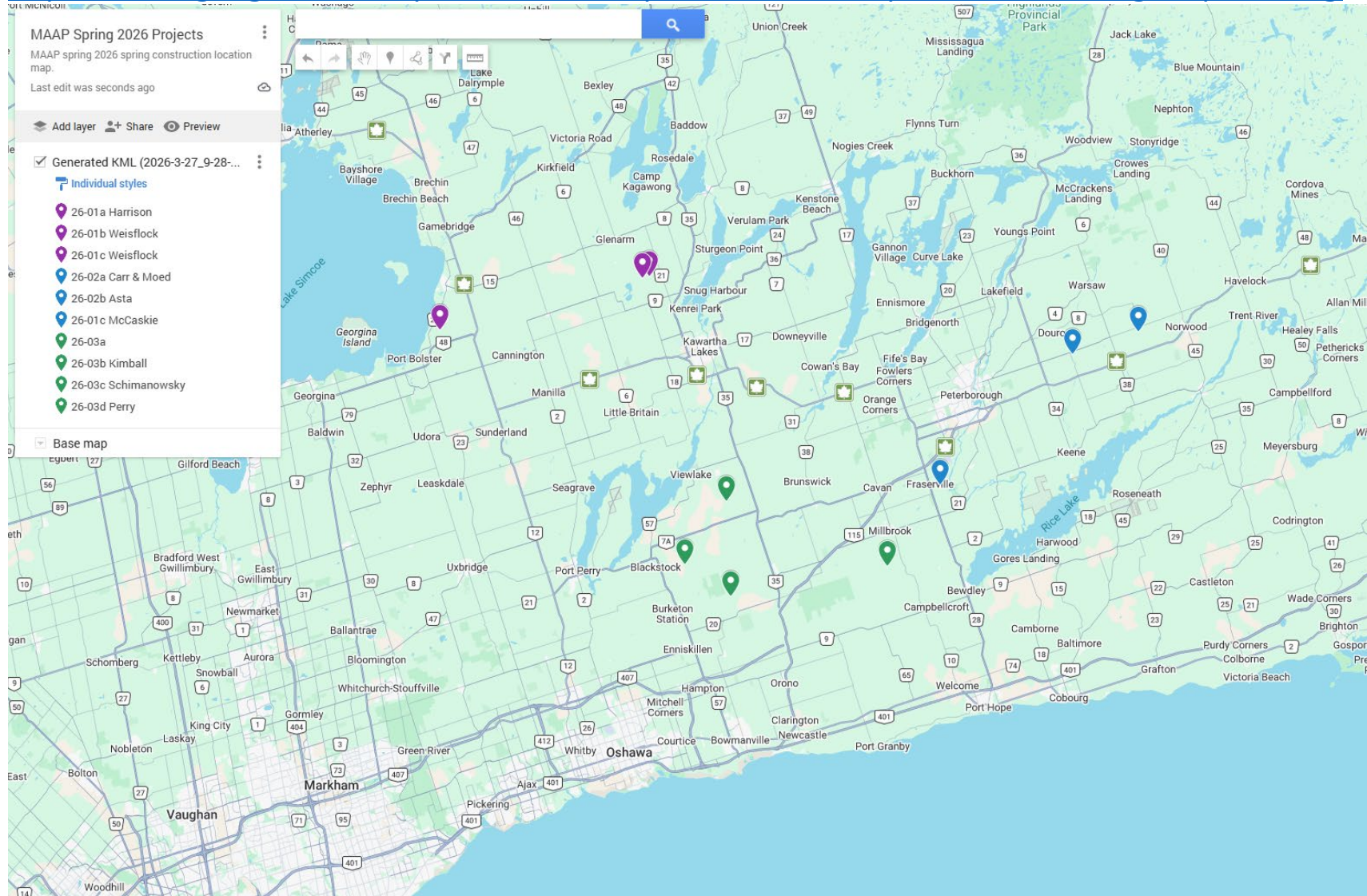
Overview Site Location Map

Durham, Kawartha Lakes and Peterborough Counties

Spring CONSTRUCTION –CONTRACTS 26-01, 26-02 and 26-03.

Click on the interactive link below. If you open the link on your smart phone it will open up in Google Maps and can be used as a GPS.

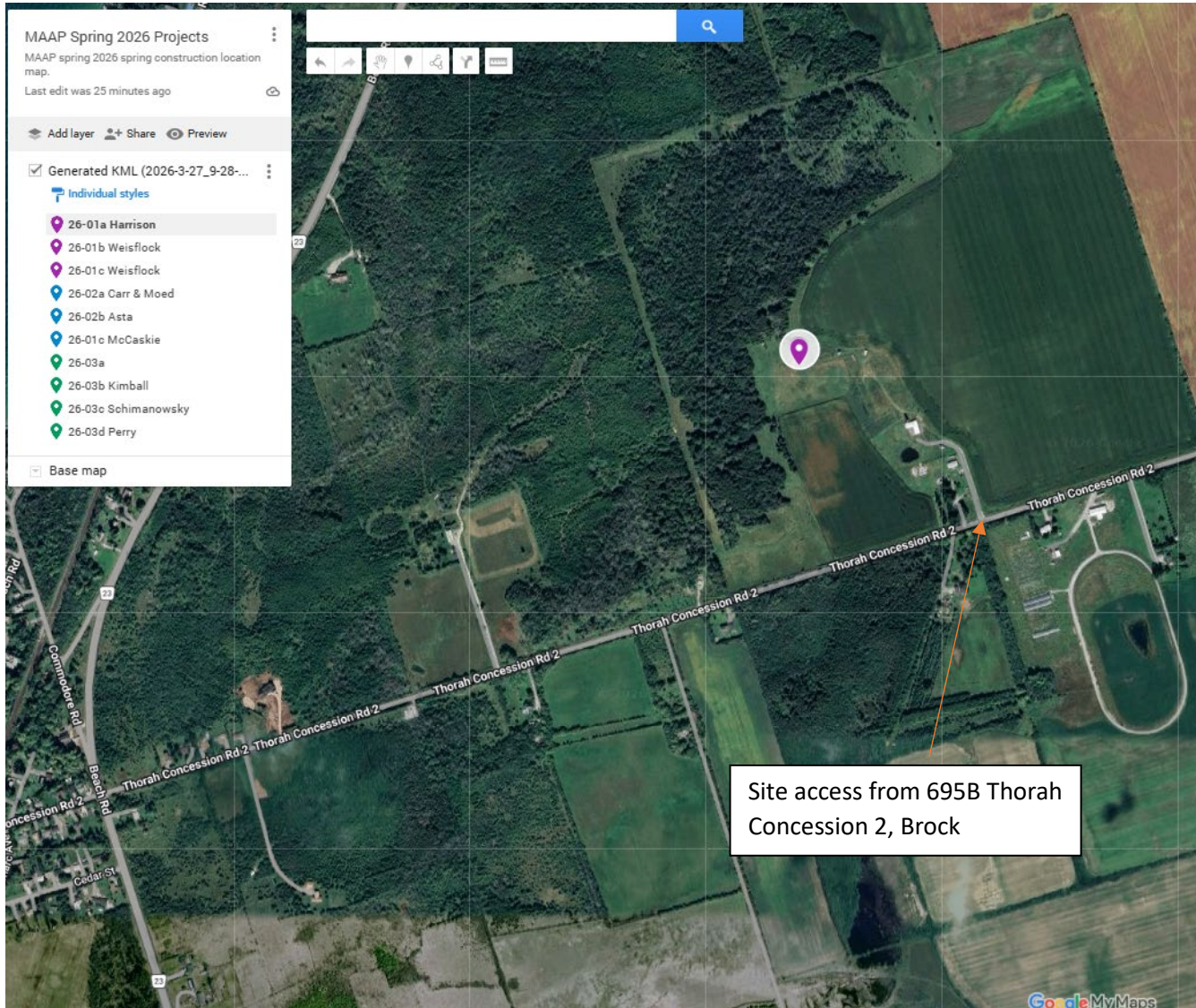
<https://www.google.com/maps/d/edit?mid=1pFoXa4titKV-9KnqllCOaK9ZAD8R94g&usp=sharing>



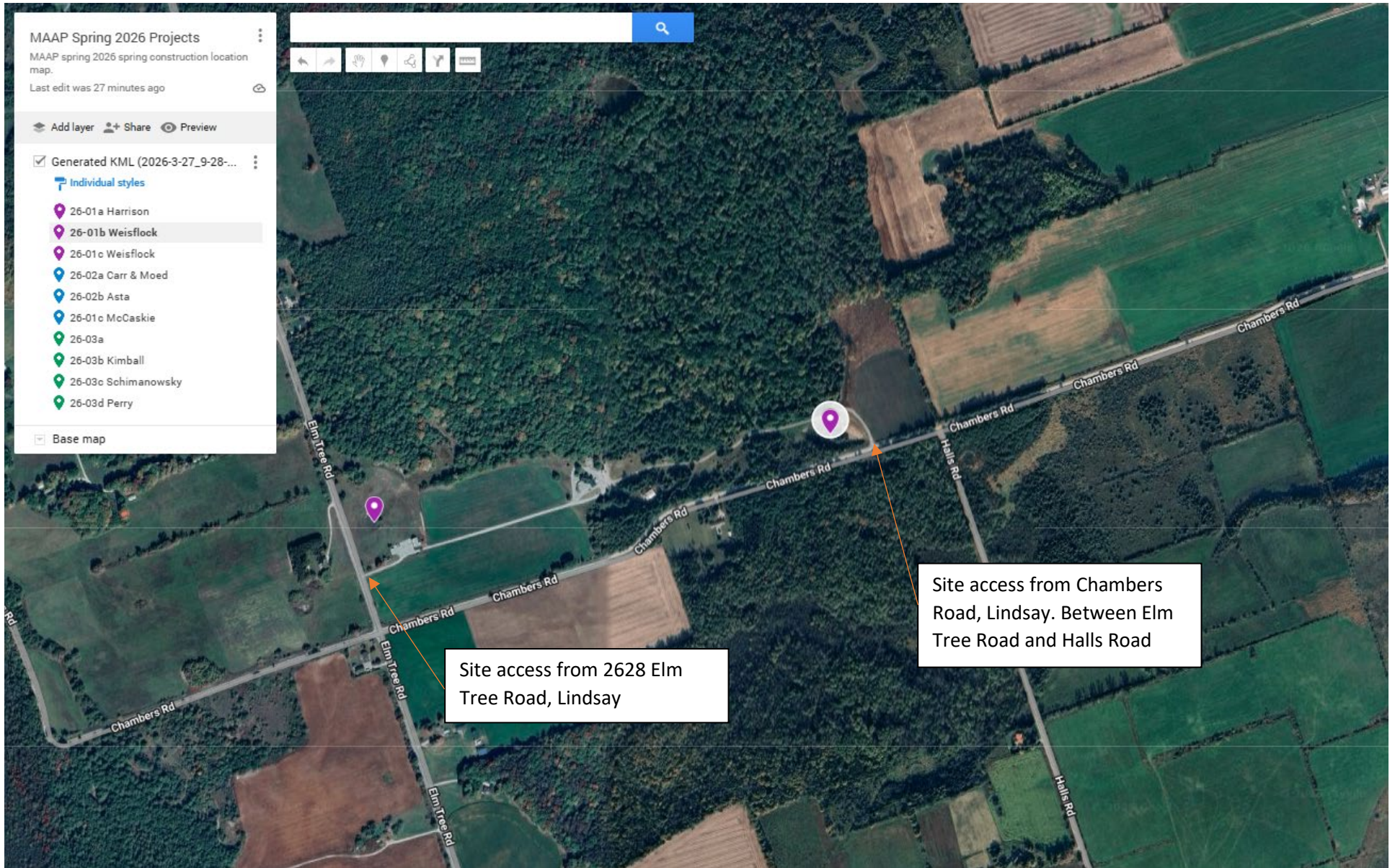
START: April 21, 2026, at 8:00AM.

We will meet at 26-01a Harrison and travel to each site thereafter. Please ensure you have a full tank of fuel.

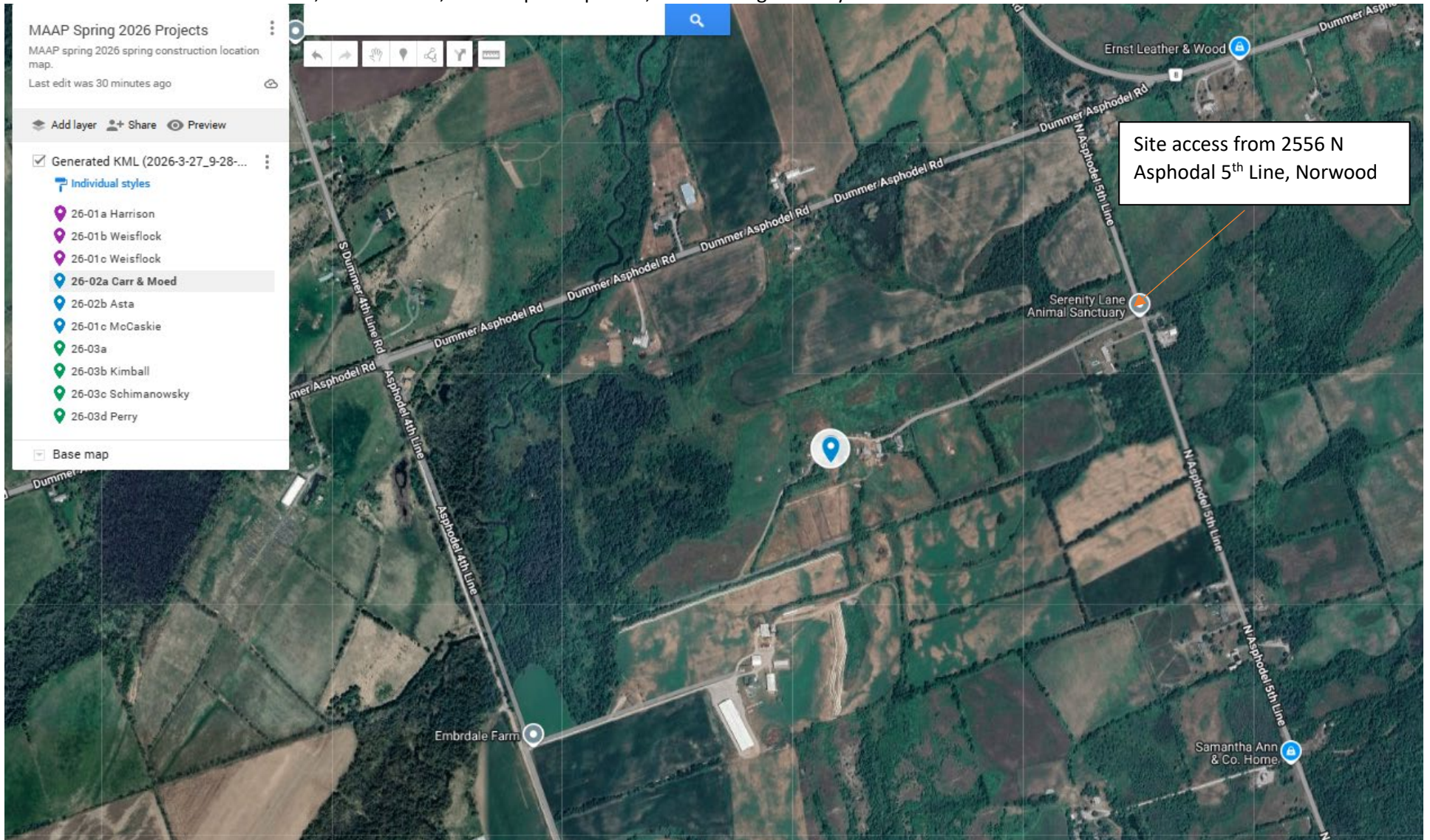
26-01a Harrison 1.98ha: Lot 18, Concession 2, Township of Brock, Durham County



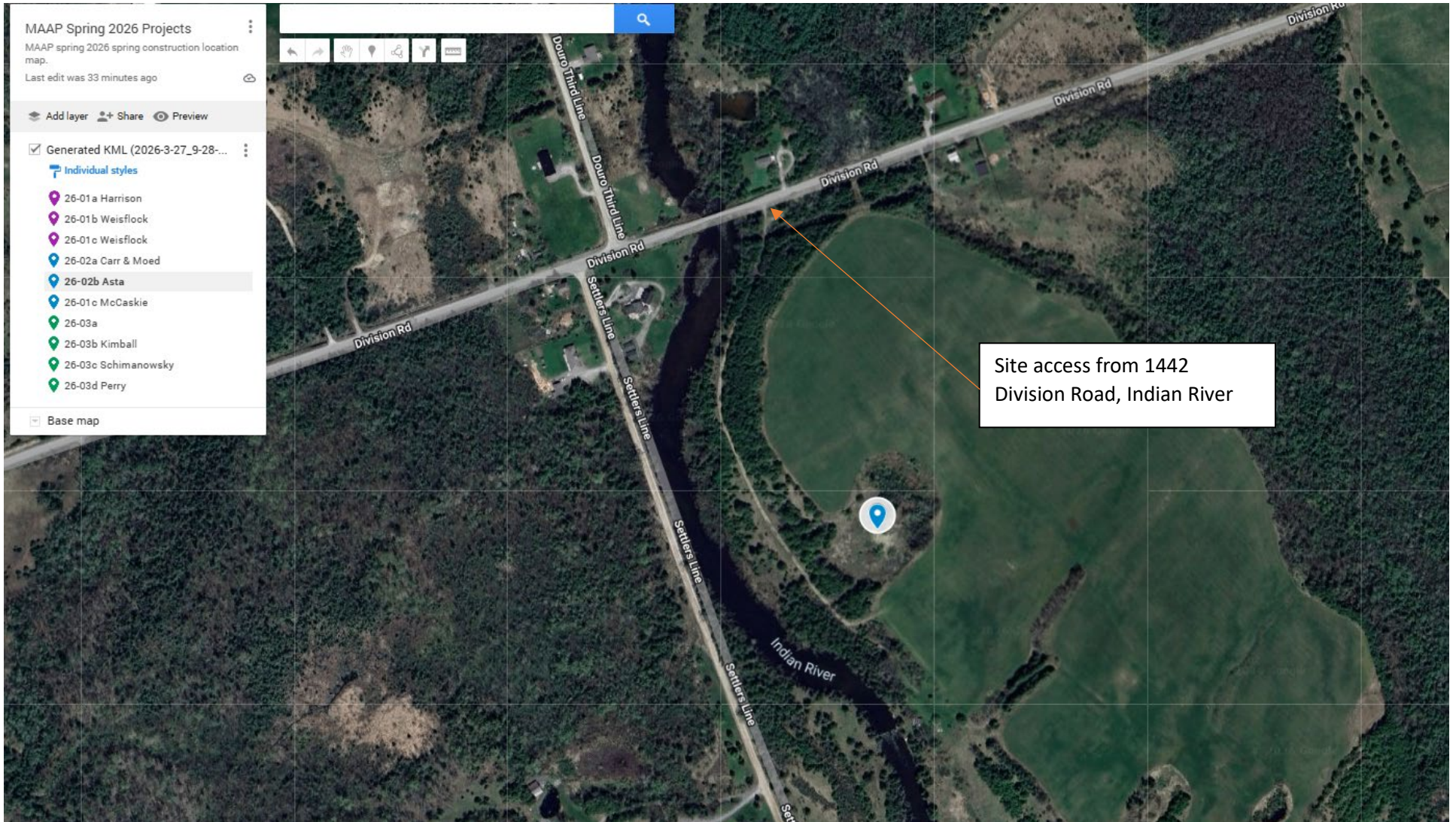
26-01b Weisflock 0.59ha and 26-01c Weisflock 0.96ha: Lot 11, Concession 2, Township of Fenelon, County of Kawartha Lakes



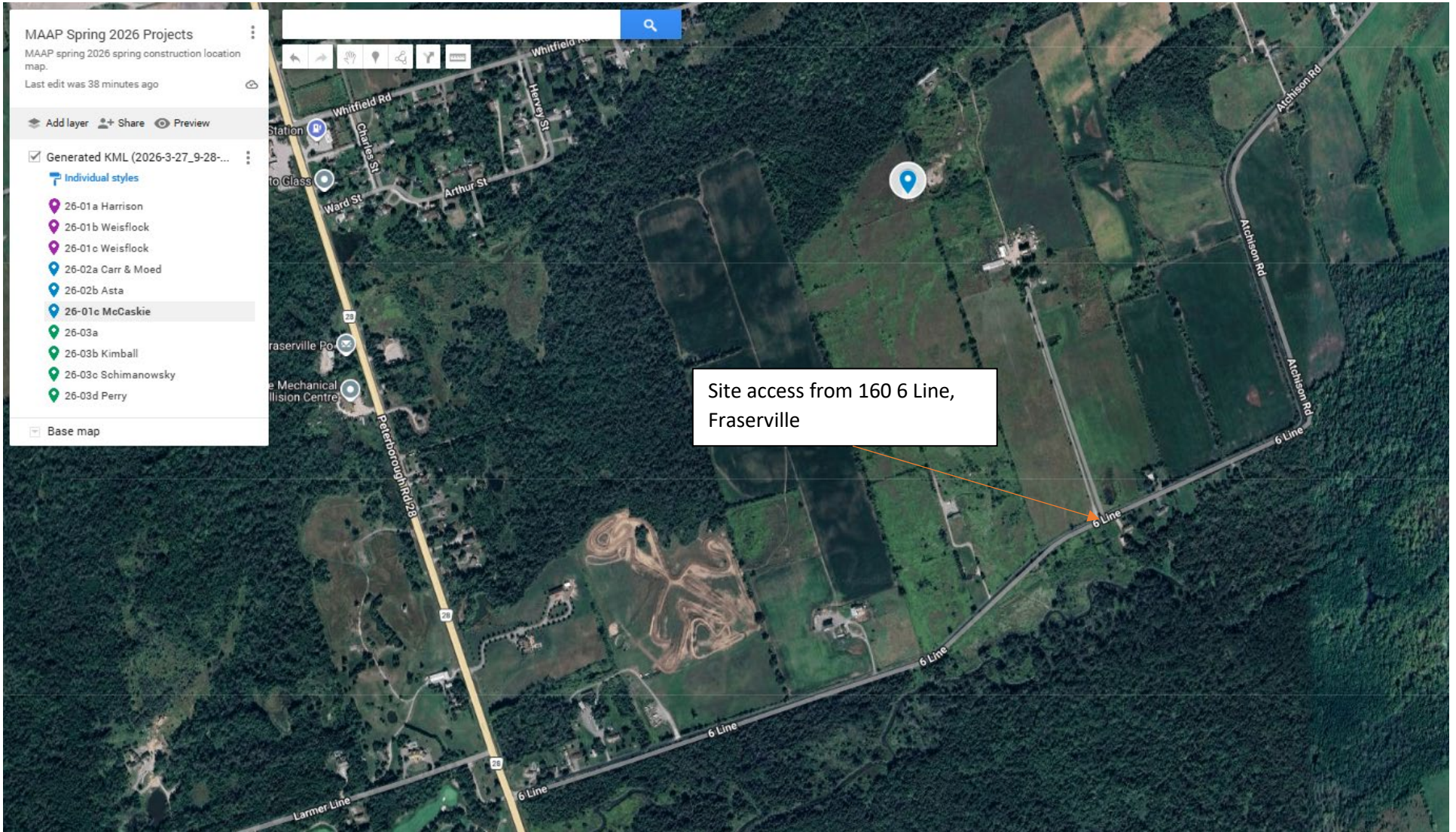
26-02a Carr & Moed 0.47ha: Lot 20, Concession 4, Township of Asphodel, Peterborough County



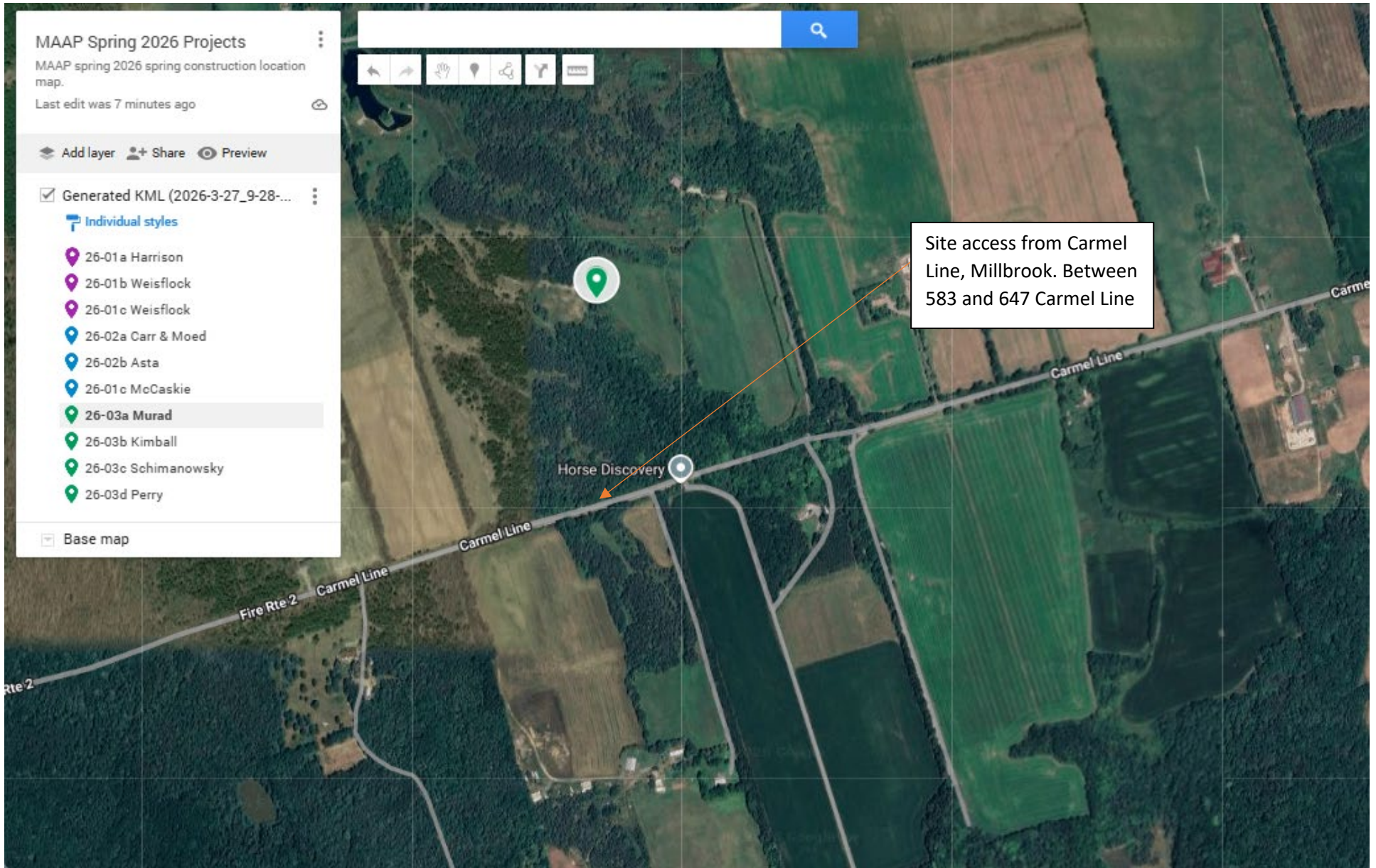
26-02b Asta 2.1ha: Lot 31, Concession 3, Township of Otonabee, Peterborough County



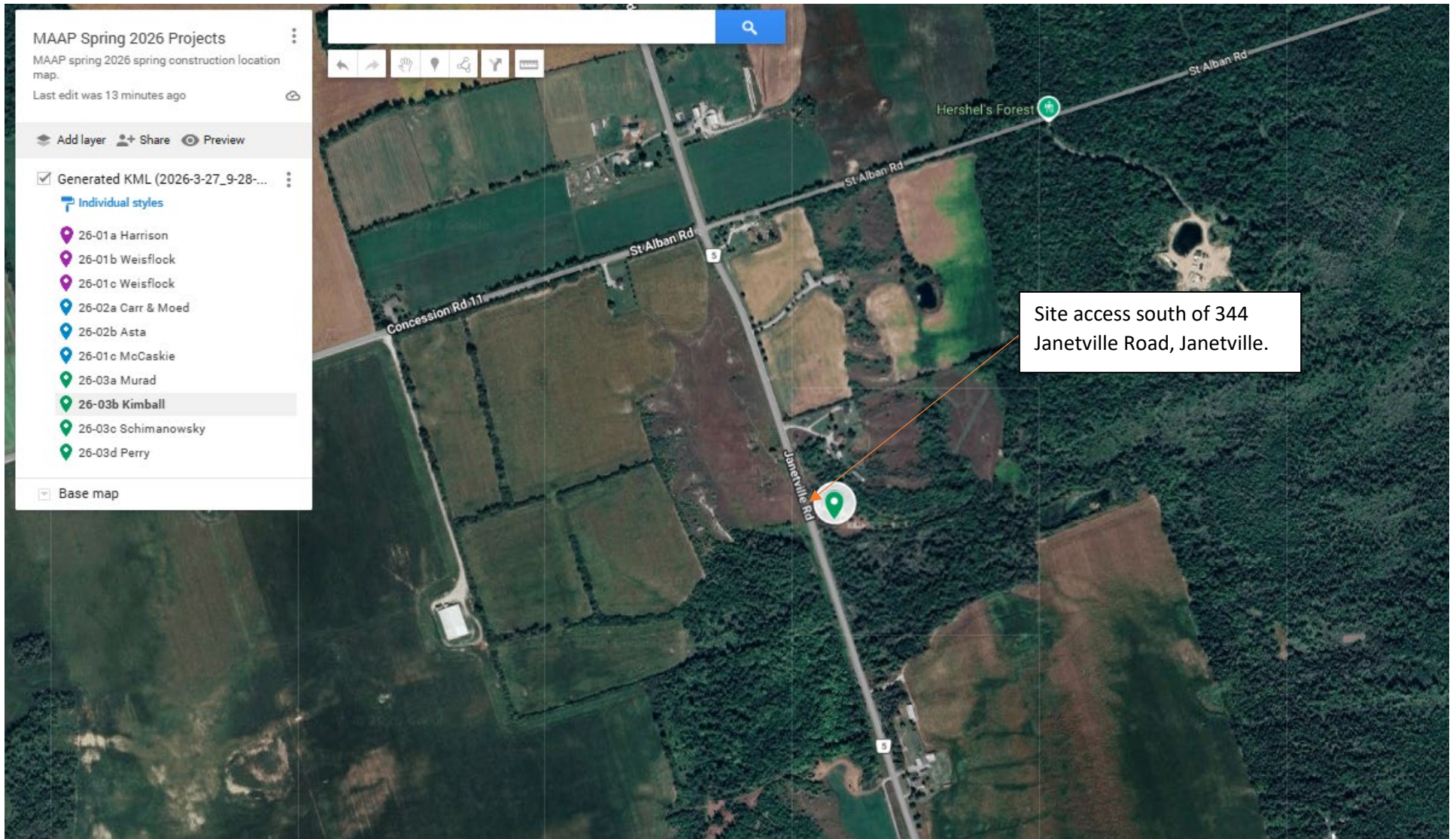
26-02c McCaskie 1.56ha: Lot 3, Concession 6, Township of South Monaghan, Peterborough County



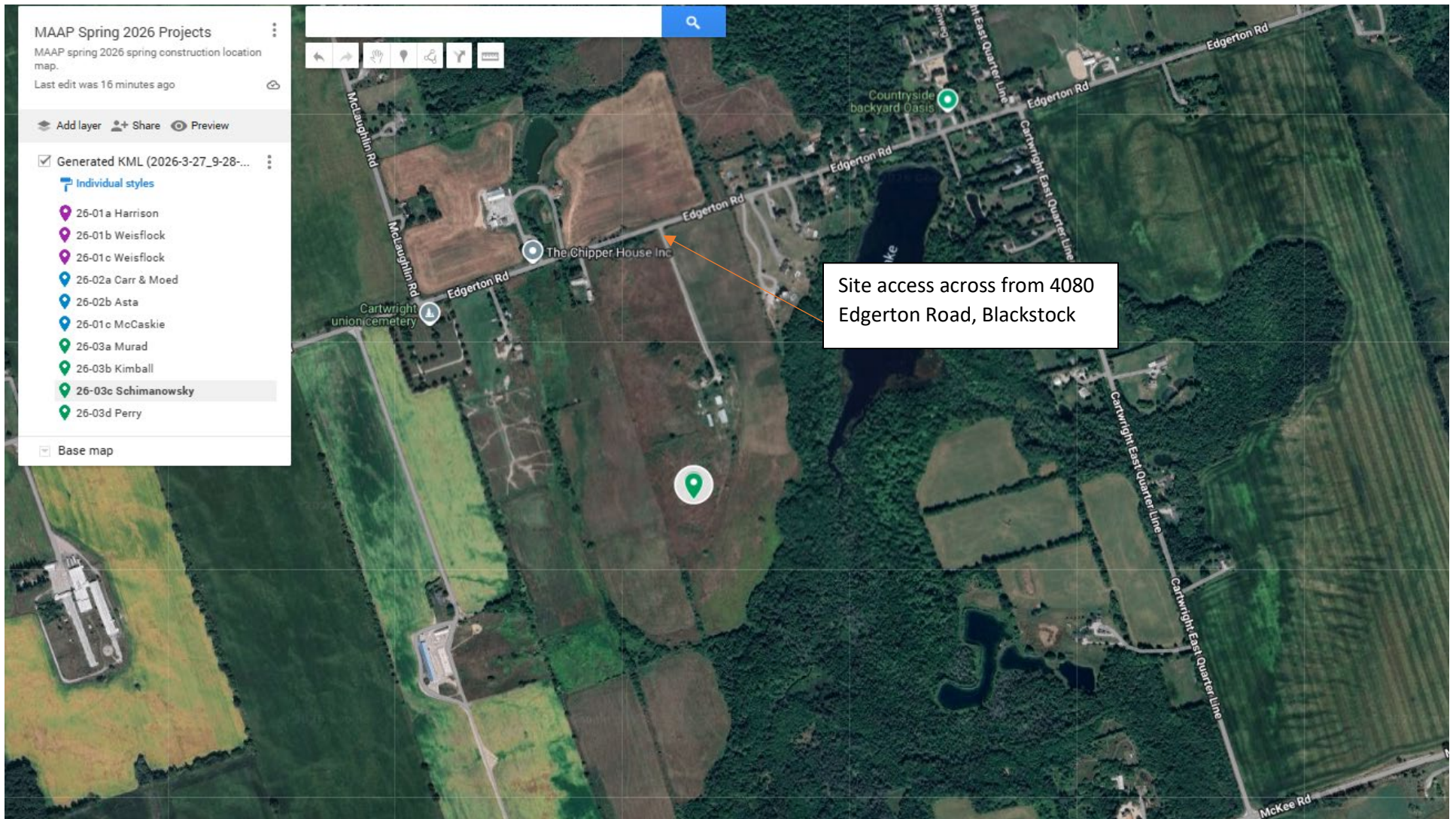
26-03a Murad 0.58ha: Lot 9, Concession 2, Township of Cavan, Peterborough County



26-03b Kimball 0.24ha: Lot 6, Concession 10, Township of Otonabee, Peterborough County



26-03c Schimanowsky 0.79ha: Lot 17, Concession 4, Township of Cartwright, Durham County



26-03d Perry 0.37ha: Lot 1, Concession 10, Township of Darlington, Durham County

